

Staple Hill High Street

Public Realm COVID-19 response to recovery

Frequently Asked Questions

1. What are you doing in Staple Hill High Street?

From Sunday 28 June we are installing temporary shuttle traffic signals on High Street reducing the traffic to one lane. This will enable us to create additional space on the footpaths either side for pedestrians and cyclists to access shops in a safe environment where the 1m or more distance can be maintained so we can save lives as we emerge from Covid-19 restrictions.

Vehicle traffic will be separated from the wider walking and cycling areas by barriers that include a mid-point gap so pedestrians can cross the road. Parking bays on the north side of High Street, a bus stop and the signal controlled crossing will all be suspended.

The single lane of traffic runs past the junction with Page Road, which will be closed to through traffic between free car parks and there will be no direct access to the High Street for motor vehicles. We will signpost the routes to both free car parks on Page Road from the High Street.

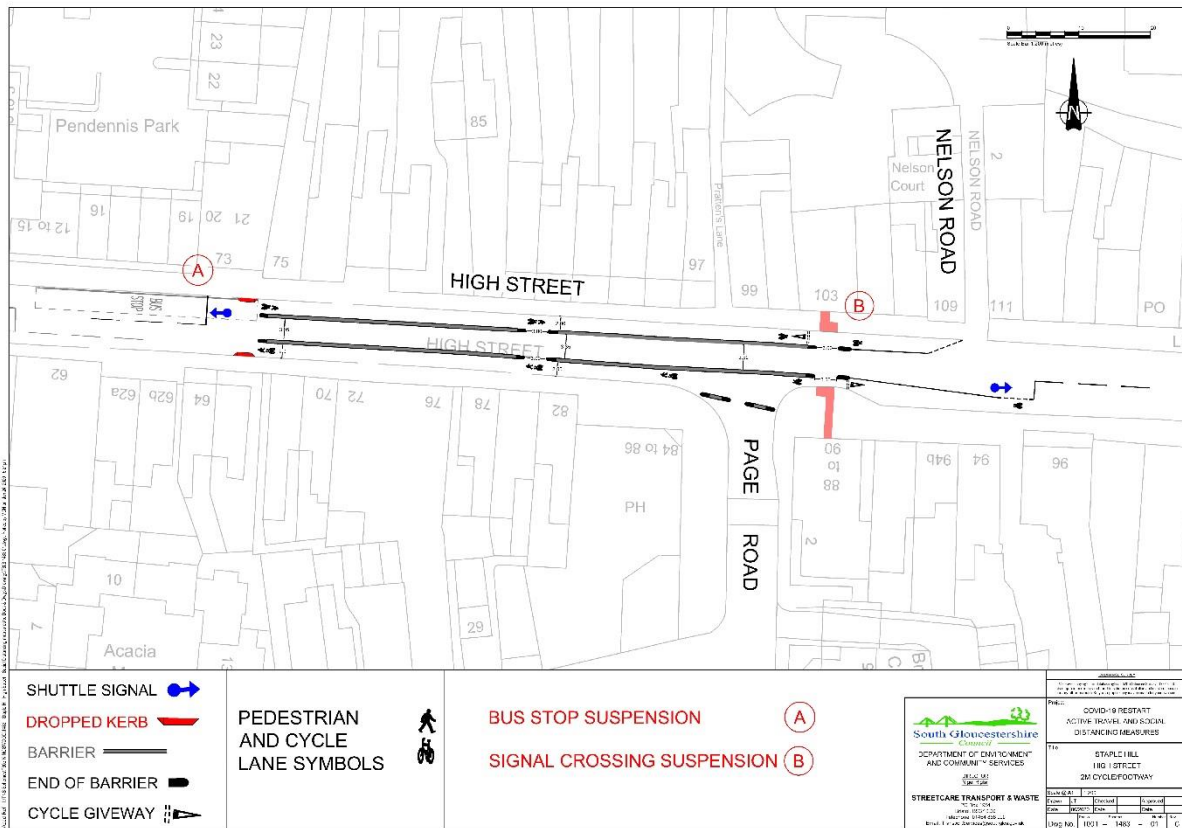
The changes will initially be implemented under as a temporary restriction and will later be followed up by an Experimental Traffic Order which may potentially run for 18 months before being made permanent. An experimental traffic order allows time for a more measured response to be made as people see the trial working before any decision is made about making permanent changes. We will be monitoring the situation closely and liaising with councillors and business representatives in the town.

Update – 10.07.2020

From Monday 13 July the original scheme will be adjusted with the following changes:

- Removal of the shuttle system to reinstate two-way traffic, parking, and the pedestrian crossing on the High Street
- Barriers to widen the pavement (using parking spaces) at identified pinch points
- The bus stop will be moved onto the road within the new space created by the barriers. The bus shelter itself cannot be moved and will have to stay in place

The closures to through traffic on Charnell Road and Signal Road will be reviewed later.



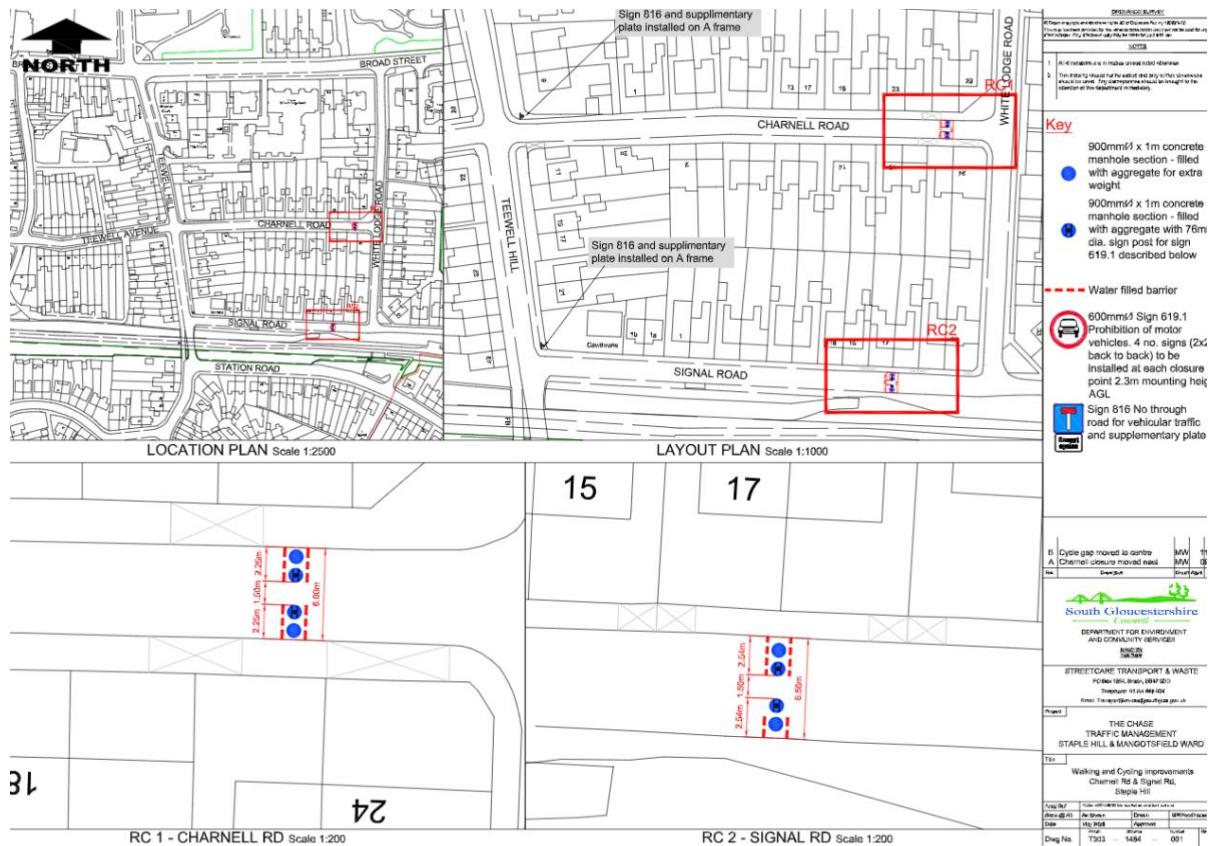
2. Why have you changed the scheme in Staple Hill?

Since the scheme started on Monday 29 June, we have monitored the High Street and gathered feedback from residents and businesses which has given us a better understanding of how the High Street is being used and identified clear ‘pinch points’ for social distancing. This has led to the decision to install more appropriate measures to protect people in the areas where social distancing is most needed.

3. Why haven’t you made similar changes to any of the other schemes?

We have adjusted other schemes following monitoring and assessment of the impacts once they are in place and continue to encourage people to let us know what they think.

4. What are you doing on Signal Road and Charnell Road? In addition to the High Street scheme, to prevent congestion on nearby roads and to improve access to the Bristol Bath railway path for cyclists and pedestrians, we will be closing Signal Road and Charnell Road to through traffic from Monday 29 June. Access for residents will be maintained from Teewell Hill. Waste collections will continue as normal.



5. Why are you implementing these measures?

Our high streets are central to our communities and we need to take bold action now to support local jobs and economies as well as people’s mental health and wellbeing as we are all keen to get back to work and, in ways that keep us all safe, be out and about supporting local businesses.

As we look to a near-term future returning to as normal life as possible, while maintaining social distancing to minimise the risk of further spreading the COVID-19 virus, we need to invest significantly in our high streets. We will work closely with businesses and retailers so that people can be encouraged back to the high street and be reassured that their safety is being designed into the experience.

Our high streets will look and feel different if they are to thrive in the weeks and months ahead. We will need to allow shops, restaurants and cafes to trade outside immediately in front of their premises. We will need to provide extra space for locals to get around safely and be able to maintain social distancing, whether on foot or by bike.

We are keen to ‘lock in’ some of the benefits we have seen over the past few months including an increase in walking and cycling, which is why we are improving access to popular cycle routes such as the Bristol Bath railway path. Closing Signal Road and

Charnell Road to through traffic will provide improved access for cyclists and pedestrians.

6. Will this put people off coming to Staple Hill?

We believe by providing much more space for pedestrians and for people to queue outside shops we will create a safe space for the public to feel confident enough to visit their local high street, use the shops and provide an environment for business to trade safely. This initiative is very much in line with government's emergency response to Coronavirus (Covid-19). The intention of these plans is to help protect our residents against coronavirus and save lives as lockdown restrictions are relaxed and to boost the local economy building further on more walking and cycling seen during lockdown.

7. Where will people park?

We operate several free car parks in Staple Hill, details below, and these will continue to open as normal. We understand concern about parking but we want to make the town centre an attractive and safe environment as we emerge out of lockdown while Covid-19 remains a threat in the community. Some additional parking will be created on Page Road next to the western short stay car park.

Location	Capacity	Max length of stay
Byron Place, BS16 5HW	49 + 3 disabled	2 hours
Haynes Lane, BS16 5JE	26 + 3 disabled	12 hours
Page Road – formerly long stay BS16 4NE		4 hours
Page Road – short stay, BS16 4NE	27 + 3 disabled	2 hours

8. What about disabled parking spaces?

We will keep the need for reallocating general spaces as additional disabled parking bays under review over the first few weeks

9. How will my bins be emptied?

Refuse collections will continue as normal and there will not be any changes to collection days or collection points for bins.

10. Do I need to remove my vehicle before the closure is put in place?

We would politely ask that all vehicles parked where barriers are to be installed in the High Street, Page Road or in the vicinity of closure points on Signal road and Charnell Road will need to be removed on Sunday 28 June.

11. Will bus services be affected?

Some journey times may be affected although we are working to minimise delays as much as possible. The Pendennis Road bus stop in the eastbound direction will be closed. This means passengers wishing to connect with the Y5 service will need to use Thicket Road bus stop. For the 17 and 49 service passengers can use Thicket Road or The Portcullis (Stop A). Both stops are within 300m of Pendennis Road bus stop. In line with government guidelines only travel on public transport if your journey is necessary, please note that emergency timetables are in operation and are subject to change. For more information and live predictions for most routes at <https://travelwest.info>

12. How long are these measures going to be in place?

The shuttle system in High Street and the closures on Signal Road and Charnell Road and Page Road are trials initially being installed under an Temporary Traffic Regulation Notice and our intention is they will later be followed up by an Experimental Traffic Order which may run for 18 months before a decision is made about whether it is made permanent. We will be monitoring the situation closely and liaising with councillors and business representatives in the town.

13. How do I have my say?

You can provide feedback about the Staple Hill High Street scheme at www.southglos.gov.uk/streetchanges or call 01454 868000.

14. Who is paying for these measures?

The funding for this work comes from central Government through the West of England Combined Authority (WECA).

15. Have you consulted people before implementing this scheme?

The government has issued statutory guidance which expects local authorities to make significant changes to their road layouts to give more space to cyclists and pedestrians. The guidance also states that 'measures should be taken as swiftly as possible, and in any event within weeks, given the urgent need to change travel habits before the restart takes full effect'.

As a result these changes have been agreed with local councillors, and residents of Signal Road and Charnell Road, on a trial basis to support businesses to reopen. We all need to abide by the Covid-19 guidelines to protect each other, help to control the virus and save lives.

Given these timescales, we have not been able to carry out a full consultation as we normally would expect to for a scheme of this scale before its implementation but we are providing as much information as possible and answering queries as quickly as we can.

Consultation will continue to run throughout the scheme's trial.

16. My business relies on passing trade, how are you going to help?

During the past few months, we have seen a significant shift to online shopping as many people, particularly those who are vulnerable, are very cautious of going out and will remain so for some time. We believe taking this action now to provide a safer environment in which to shop will help encourage people to use the High Street and

benefit the local economy. We are working with all businesses to help support them as we emerge from the lockdown restrictions. Information on how we are supporting businesses during the pandemic is available on our website www.southglos.gov.uk/coronavirus where you can download posters, social distancing floor markers and other materials to help reopen safely.

17. Will you allow access for deliveries and loading?

Access for residents, deliveries and refuse collection will be maintained.

18. How many more schemes will there be and where?

This scheme is one of many we are delivering to support businesses and allow people to get to work safely as well as improving safety for those who walk and cycle and helping schools to reopen. Further details of other schemes will be announced once they are confirmed.

19. I want to see improvements in my area, how do I suggest a scheme?

We have also adapted our Local Transport Priority List (Assess and Decide) process for considering requests from residents. We welcome any useful suggestions from the public. If there are any interim measures we can introduce to easily help people maintain social distancing we will put these in place as soon as possible. Visit www.southglos.gov.uk/local-transport-priority-list