

# Climate Emergency STRATEGY



# Contents

Introduction.....	3
What is the Climate Emergency?.....	4
Global impacts .....	5
Local impacts .....	5
Reducing our carbon emissions .....	6
Getting ready for the local impacts of climate change .....	7
Taking action .....	8
The natural environment.....	9
Targets and monitoring.....	10
Challenges and opportunities in South Gloucestershire.....	11
Climate Emergency action plans .....	13
Climate change and equalities.....	19
Monitoring and review.....	21
Creating change nationally, regionally and through local policy.....	22
Delivery .....	24
<b>Appendix 1:</b> South Gloucestershire Council to declare a Climate Emergency.....	25
<b>Appendix 2:</b> Climate Emergency Action Plan – funded projects .....	27
<b>Appendix 3:</b> Climate Emergency Action Plan – Year 1 (2020/21) .....	37

# Introduction

- This is the South Gloucestershire Climate Emergency Strategy document. It has a 10 year lifespan 2020-2030.
- It provides an introduction to our annual Climate Emergency Action Plans 2020-2030. It explains the Council's principles and general approach to delivering the aim of South Gloucestershire being carbon neutral by 2030.
- This document is jointly owned by South Gloucestershire Local Strategic Partnership and South Gloucestershire Council.
- This document sits under the South Gloucestershire Sustainable Community Strategy.

## Climate Emergency declaration:

In July 2019, South Gloucestershire Council declared a Climate Emergency pledging to provide the leadership to enable South Gloucestershire to become carbon neutral by 2030.

In addition the council joined a group of forward thinking local authorities and signed up to the UK100 pledge to enable our communities to achieve 100% renewable energy across all sectors. The revised UK100 pledge (signed November 2020) commits to net zero council emissions by 2030 and net zero area-wide emissions by 2045.

Read the declaration at: [www.southglos.gov.uk/climatechange](http://www.southglos.gov.uk/climatechange)

### To deliver these pledges our aims are:

1. For South Gloucestershire to become carbon neutral by 2030,
2. To maximise the generation of renewable energy from installations located within South Gloucestershire,
3. To ensure South Gloucestershire is prepared for the local impacts of a changing climate,
4. To ensure that nature in our local area is more protected, connected and healthy and that biodiversity is increased,
5. To plant trees across South Gloucestershire by 2030 to double tree canopy cover.



The Climate Emergency declaration was a cross-party decision





# Our Vision

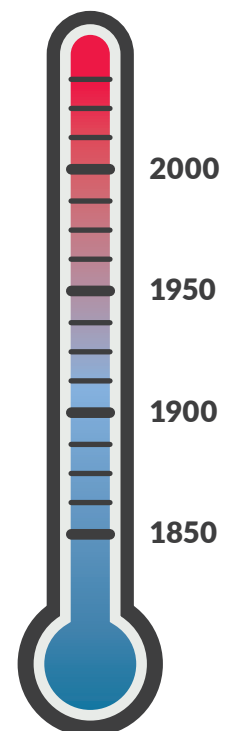
*is for a climate resilient South Gloucestershire with a thriving low carbon economy and lifestyle reflected in our travel, homes, businesses and communities, where nature can flourish.*

## What is the Climate Emergency?

Average global temperatures have now increased by 1°C above pre-industrial levels and the cause is human made through the burning of fossil fuels. The amount of global heating which takes place now and in the future depends on the total quantity of greenhouse gas pollution, which includes carbon dioxide, in the atmosphere.

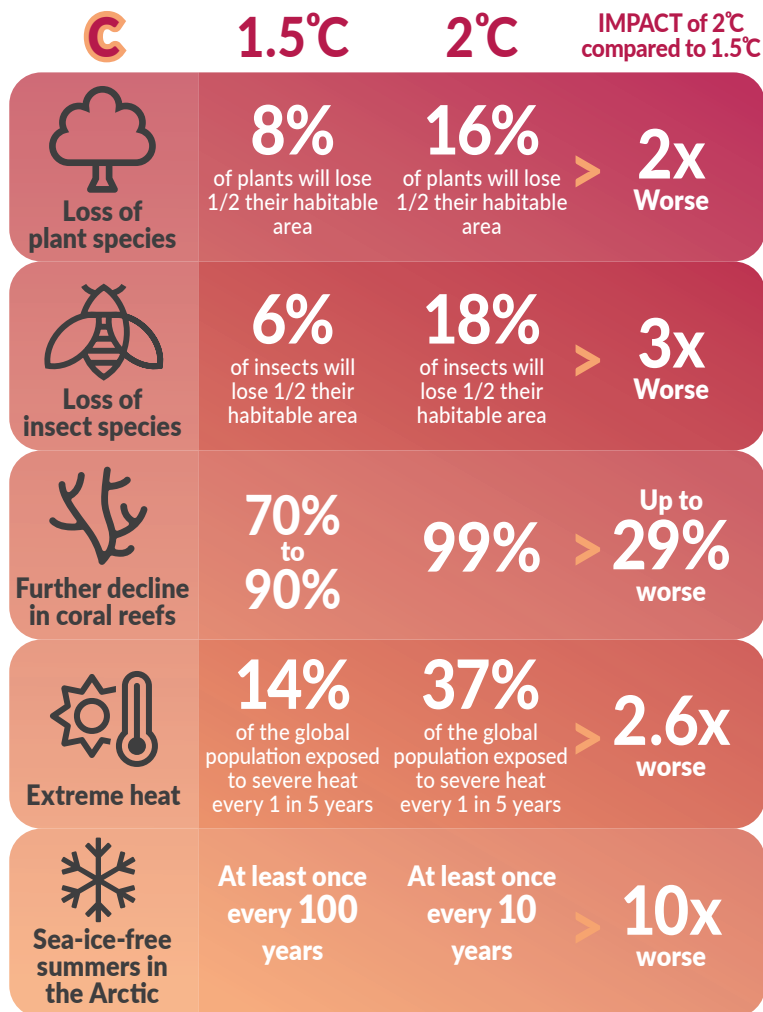
In 2015 global leaders met in Paris to agree to avoid dangerous climate change by limiting global heating to well below 2 degrees C and to pursue efforts to limit it to 1.5 degrees C. The UK government signed the Paris Agreement committing to reduce greenhouse gas emissions.

The world is now on track to overshoot the 1.5°C limit before the year 2050 – the outcome of which would be severe and not possible to reverse.



## Global impacts

The chart below shows the impact of different levels of warming. Changes in the average global temperature may appear small but produce very large impacts in the natural world and physical systems including the weather and sea-levels.



- The impact of average warming of **2 degrees C** is much greater than average warming of **1.5 degrees C**.
- **2 degrees C** warming would lead to severe consequences for humans and all life on earth.
- Many people would be forced to leave their homes due to flooding, droughts and famine.

## Local impacts

Currently flooding is identified as the number 1 risk to the UK from climate breakdown. There has already been a clear increase in the number of flooding events and the scale of the impact they have had. Locally, flooding in the Winter of 2020, had a severe impact in the Gloucestershire and Tewksbury area as shown in the photo below.



## Reducing our carbon emissions

We need to look at the sources of greenhouse gas pollution and take the necessary steps to reduce these to the lowest possible level and offset any remaining emissions. More broadly speaking and on a global scale, our carbon emissions impact comes from what we buy and the services we use, and what we invest in. We therefore need to tackle all of these sources of emissions.

Locally our carbon emissions are mainly generated from homes, transport and industry. To make our contribution to limiting the average rise in global temperature to 1.5 degrees C we need to change the way we heat and power our homes, move people and goods, and provide manufacturing and services so that doing these no-longer emits the greenhouse gas pollution that is increasing global heating.

### Reducing our carbon emissions will involve:

- Switching journeys under five miles to bike, public transport and walking,
- Reducing our mileage in all vehicles,
- Switching from diesel and petrol vehicles to electric vehicles for journeys that can't be made on foot, by bike or public transport,
- Changing the way we heat and power our homes and replacing gas and oil boilers with heat pumps or heat supplied from a low carbon heat network,
- Changing the way we heat and power our businesses by switching to renewable heat and using roofs to generate electricity using photovoltaic (PV) panels,
- Changing the way we locate and access services,
- Buying less,
- Making all new developments zero carbon and locating them in low impact locations,
- Investing in the green economy by for example retrofitting buildings for high energy efficiency standards and increasing renewable energy.

# Getting ready for the local impacts of climate change

Locally climate change is likely to have big impacts on the amount of rain and extreme heat we experience such as the temperatures experienced in the UK during the summer of 2018. These extreme weather events are likely to happen at least every other year by 2040 if temperatures continue to rise at current rates, for example May 2020 tied with May 2016 as being the hottest May ever recorded globally in human history. As temperatures increase in the UK there are likely to be more incidents of regular flooding of homes and businesses and disruption of local services. Furthermore, it may impact on our health, the food available for us to eat and our water supply. Globally huge numbers of people will be forced to leave their homes due to flooding, lack of food and water, health risks and political instability as a result of global heating.

Climate change is one of a number of problems for the natural world and the more extreme the effects, the harder it is for nature to recover. We are losing natural habitat and record numbers of animal and plant species. We rely on the natural world for our food supply, water, raw materials and our wellbeing. We are linked to the natural world and by restoring the natural world we restore our own future and all life on earth.

## Building local climate resilience will include:

- Improving how we work together, involving everyone to enable a zero carbon, nature rich and healthier future,
- Reducing flood risk through managing landscapes for example by slowing the rate at which rainfall runs from higher ground into streams and rivers,
- Making sure that services are not disrupted during extreme weather events (delivered remotely where possible),
- Designing new buildings so they can withstand heatwaves without the need for energy intensive air conditioning, and adjusting existing buildings and the way we use them to withstand extremes of temperature,
- Building new highways for walking, cycling and vehicles to be designed to withstand extreme weather, particularly flooding and heat,
- Planting trees and vegetation to provide habitat, summer shading, and to slow down heavy rainfall which causes flooding incidents,
- Protecting, improving, increasing, and joining up areas of woodland, grassland and wetland to help nature thrive and withstand new pressures,
- Growing food locally,
- Reducing waste and working towards zero waste by 2030,
- Reducing the waste of water,
- Preparing for new pests and diseases triggered by a hotter climate.





River Severn – river levels predicted to rise

## Taking action

- We can reduce the negative outcomes of climate change by taking action and changing how we live and how our society works,
- It is important to remember that what we do matters, because every extra degree of warming matters,
- Restoring the health of the local natural environment is an essential part of tackling the Climate Emergency.

Changing the way we live today can also provide many benefits to us:

- Improved health and wellbeing,
- Stronger local economy,
- New employment opportunities in the green economy,
- Better access to a healthier and wildlife rich natural world,
- Better public transport and walking and cycling options,
- Improved connections between people, businesses and communities,
- Less clutter in our lives.



Sims Hill community supported agriculture



# The natural environment

The council also recognises that along with other factors, climate change is having a seriously negative impact on the health of nature and that there is an ecological crisis where increasing numbers of plants, insects and animals are dying. All life on earth depends on a healthy environment and it is also essential to protect and restore nature in its own right. Nature has a key role in reducing the negative impacts of climate change and as such, nature recovery is a key priority across our Climate Emergency Action Plans.

The council recognises that responding to climate change and supporting nature recovery will have real benefits for our communities, residents and businesses in terms of improving our environment, creating new jobs, improving our physical and mental health, and strengthening our communities. Improved health includes better levels of fitness from people leading more active lifestyles and reduced numbers of people experiencing breathing problems due to reductions in air pollution from vehicles and industry. Better mental health and wellbeing is a proven result of access to a healthy natural local environment for exercise and connection with nature.

## Nature recovery includes:

- Supporting nature by protecting and improving local habitat, preventing the loss of key wildlife,
- Restoring landscapes including salt marshes, meadows and common land,
- Increasing the amount of land managed to benefit nature and biodiversity,
- Linking areas of woodland, grassland and wetland to create nature networks which enable nature to thrive and withstand other changes,
- Planting trees, perennial shrubs and flowers which support pollinating insects and other wildlife,
- Supporting communities, business and residents to restore nature
- Working with farmers to manage land for the benefit of nature,
- Reducing all types of environmental pollution including plastic pollution.



Brook Way wildflower verge

## Together we need to:

- Reduce our carbon emissions as quickly as possible
- Protect and restore nature, then the natural world can help us
- Get ready for the local impacts of climate change



## The climate and nature emergency needs you

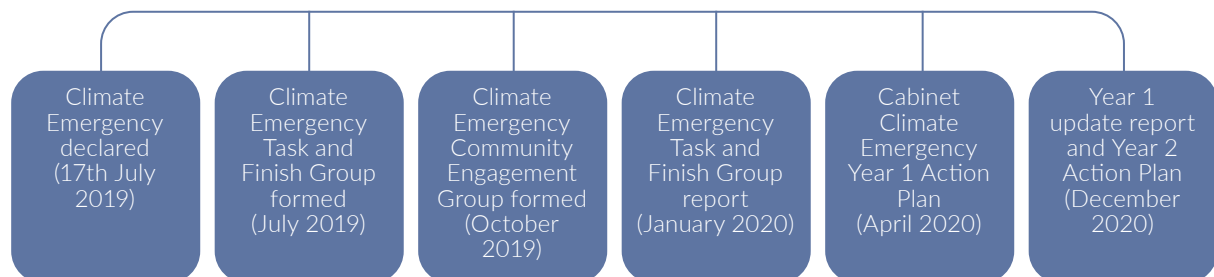
To tackle the climate and nature emergency we need everyone to act and that applies in South Gloucestershire just as it does across the world.

## Aims and monitoring

Through our performance management system we will monitor performance towards the key goals in our Climate Emergency declaration:

To provide the leadership to enable South Gloucestershire to become carbon neutral by 2030, and to maximise the generation of renewable energy from installations located within South Gloucestershire.

### Timeline of South Gloucestershire Climate Emergency action



The above timeline sets out how the Council has responded to the Climate Emergency over the first year following the declaration.

## A yearly process

Each year over the 10 years from 2020 to 2030 the council will produce and deliver an annual action plan, reporting in December each year on the progress that has been made.





## Challenges and opportunities in South Gloucestershire

South Gloucestershire is a rich and varied area in terms of landscape, communities and economy. We value our diverse landscape with access to urban centres, historic market towns, beautiful countryside and areas of outstanding natural beauty and the extraordinary people who live and work here.

South Gloucestershire has a valued natural environment and we want to keep it that way, recognising the importance of maintaining what residents value most, particularly the area's heritage and access to nature rich green spaces.

Whilst the area in general has been more affluent than many parts of the country, this does bring additional carbon emissions challenges. For example the area has a higher than average ownership of petrol and diesel cars and therefore reducing mileage and promoting walking, cycling and use of public transport is critical. However, this also gives us the opportunity to make a really big impact very quickly.

Although generally more affluent, South Gloucestershire does include areas of deprivation and we need to ensure that our Climate Emergency work can help to reduce some of these inequalities. Our population is aging and this is relevant to how we respond to the local impacts of climate change making and putting in measures to minimise the local impact of climate change all the more vital.



In an area where we are anticipating a growth in our population as people move into this area, we need to meet these housing and transport needs in ways which don't increase carbon emissions in South Gloucestershire. We need to ensure that the additional emissions from housing and related transport is low carbon, ready for the local climate future and that any residual emissions are offset. Where nature is affected by development we must minimise the impact and actively restore nature achieving a net gain in biodiversity.

We are a population with a history of pioneering new ideas and are home to companies that are leaders in the field of innovation, digital engineering, robotics, health care and advanced manufacturing. There are many opportunities for us to lead in the growth of the net zero carbon economy and our businesses are showing us how they can rise to the challenge of climate change.

A large part of South Gloucestershire is rural and we must strengthen ties between our rural and urban areas and communities recognising and unlocking the great potential of our agricultural and other land owners to provide local food, more stable local climate and to restore nature.

Nature in our local area is experiencing extreme challenges. For example local trees are being damaged and killed by ash die back. This disease is not caused by climate change but climate change speeds up the process of tree decay and we must compensate for trees lost at a time when we need to plant large numbers of trees to tackle climate change.

We have a strong and vibrant community and we must harness the power of these existing connections, organisations and individuals to champion action for climate and nature throughout the area. We need to work with everyone in our community to create a hopeful, safer and nature rich prosperous future.



# Climate Emergency action plans

## Our approach

The South Gloucestershire Climate Emergency action plans should be developed with the following key principles in mind:

- Giving equal consideration to carbon emissions reduction, preparing for the local effects of climate change and supporting nature to recover;
- Considering climate justice and ensure that no-one is left behind;
- Optimising health and well-being co-benefits, and ensure that health inequalities are not widened;
- Ensuring that the plan aligns with local efforts to improve air quality;
- Addressing the ecological emergency and nature recovery, and consider any ecological and wildlife implications;
- Taking account of the value of the natural world in terms of wider co-benefits – social, health and environmental value (not just financial);
- Making sure the use of environmental resources is minimised and the most sustainable action is taken; and
- Optimising potential investment and sponsorship opportunities.



## Evidence base

### South Gloucestershire carbon emissions baseline gap analysis (2019)

This document shows a basic breakdown of carbon emissions sources across South Gloucestershire and looks in more detail at the key areas of carbon emissions from Buildings, Transport and Industry and at the council's direct emissions.

The council's direct emissions come from council buildings and the schools that it looks after, street lighting, business mileage and fleet vehicles.

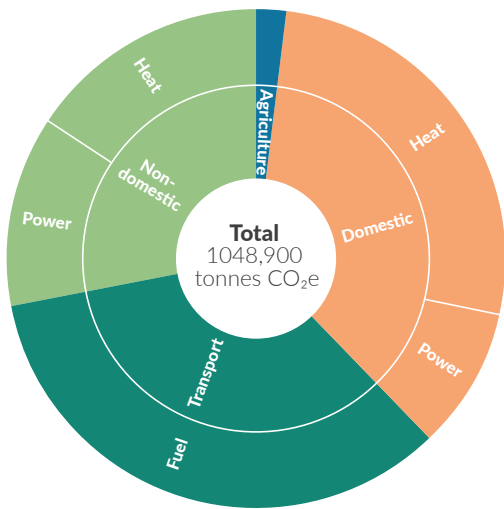
The image on the next page shows the breakdown of carbon emissions from domestic buildings, transport and non-domestic buildings. The information illustrates that the emissions are split fairly evenly 3 ways between these sources.



South Gloucestershire carbon emissions baseline gap analysis:

Due to the complexity of collecting the necessary data, this information takes two years to compile which is why the data is from 2017. This data is provided by the government's Department of Business Economy and Industrial Strategy (BEIS).

2017 South Gloucestershire carbon baseline emissions



Other than agriculture, emissions can be split into approximate thirds, between **domestic** properties, **non-domestic** properties and emissions from **transport**.

Emissions from road **transport** contribute **383,400tCO<sub>2</sub>e** from 2,800 vehicles.

Emissions from **domestic** properties contribute **342,000tCO<sub>2</sub>e** from 115,000 dwellings.

Energy consumption from **non-domestic** properties contributes around **308,500tCO<sub>2</sub>e** from 5,750 buildings.

Energy consumption from the **agricultural** sector emits around **15,000tCO<sub>2</sub>e**. This doesn't account for all agricultural emissions.

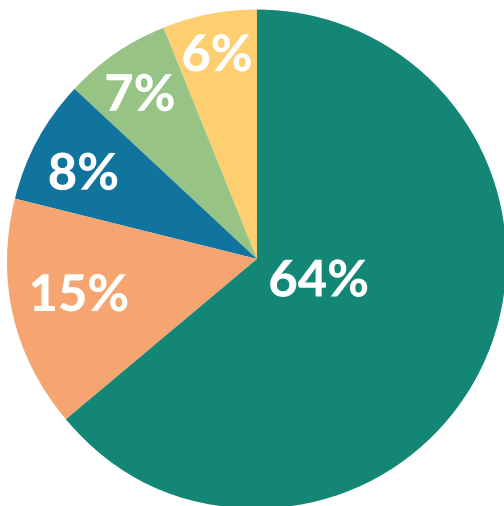
Source: Regen analysis of emissions from heat, power and transport in South Gloucestershire. BEIS data for agriculture energy consumption

Domestic Non-domestic Transport Agriculture

Agricultural emissions in this image show the carbon emissions only because it is only the carbon emissions that have been monitored for the local area over time. However, there are wider greenhouse gas emissions from agriculture which have an impact on climate change such as methane. Reducing these wider greenhouse gas emissions is also a critical part of responding to the Climate Emergency.

This report also shows a breakdown of land use in South Gloucestershire:

South Gloucestershire district – land use breakdown



Residential and gardens  
Forests, open land and water  
Agriculture  
Transport and utilities  
Other



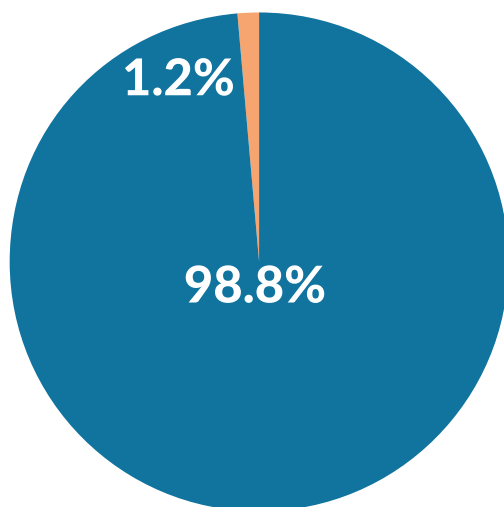
**This report also sets out a pathway of actions that can help South Gloucestershire to reduce emissions to net zero by 2030.**

The **pathway to success** towards net zero sees significant and rapid reductions in emissions from both heat and power by 2030.

To get emissions across the area to decrease we will need:

- A very high uptake of electric vehicles and a reduction of mileage,
- Very high reductions in road transport emissions from around 380 to around 220 kt CO<sub>2</sub>e. (Changes in fuel type as well as lower mileage),
- Almost all domestic properties to be insulated to at least an Energy Performance Certificate band of C (this is an energy efficiency rating for homes) reducing emissions up to 44%,
- All non-domestic properties to reduce their energy consumption by 10%. Electricity supply is decarbonised at a national level much faster than current predictions.
- In 2019 the direct carbon emissions produced by South Gloucestershire Council were only 1.2% of the total area emissions. Direct emissions are the emissions that come from the buildings and schools that the council owns, street lighting, fleet and business mileage.

#### Direct emissions from South Gloucestershire Council & South Gloucestershire district



The council's direct emissions are only 1.2% of the total area emissions. The Councils' indirect emissions from the goods and services that it buys are estimated at 6.5% of the total area emissions and the council can reduce these emissions by the approach it takes.

## South Gloucestershire Council – area wide influence

The council can influence around 40% of carbon emissions through its powers in planning, transport and waste.

The council can also influence carbon emissions from homes and businesses and work with organisations across the area to enable others to respond to the Climate Emergency.

## The Local Strategic Partnership – area wide influence

The Local Strategic Partnership has responsibility for driving forward area wide action on Climate Emergency. It is made up of a number of major organisations in our area such as the Avon Fire & Rescue Service, Airbus, University of the West of England, Avon and Somerset Police and many other organisations that all work together for the benefit of the area.

## Further evidence needed

As part of our Climate Emergency response we will be carrying out further research on local climate resilience and the measures that we need to take in the area to prepare for the local impacts of climate change. We will also look in more detail at the councils' direct emissions (for example from buildings, waste management services and street lighting) and the indirect emissions (the services and goods we buy).

We will also need more in-depth research on the different local sources of our area wide emissions and this will enable us to tackle them more effectively.

Where suitable evidence is produced it will be made publically available on our website at [www.southglos.gov.uk/environment/climate-change/climate-emergency](http://www.southglos.gov.uk/environment/climate-change/climate-emergency)

## The Council's role

A strong response to the Climate Emergency by the council will require the council to perform three key roles. These are:

**To LEAD** by example – to make our own operations and services carbon neutral, climate resilient and nature friendly (and by no later than 2030).

**To ENABLE** a low carbon, climate and ecologically resilient and thriving district through our policies, programmes, operations and decision-making.

**To INSPIRE** local residents, communities and businesses as well as national Government and agencies to take fast climate and ecological action themselves.

Over the 10 years we will be adding to this evidence base and provide access to documents where relevant on the councils website.

## The governing bodies

There are a range of groups both inside and outside the council who help to steer the council's response to the Climate Emergency declaration. The chart below sets out a list of the groups that exist and what role they have in terms of the delivery of the plan.

**The Climate Emergency Standing Group** are a cross party group of councillors who provide political scrutiny of the Council's Climate Emergency plan.

**The Clean Air and Climate Change Board** are a group of key council officers from across the council who are responsible for making sure that plans to tackle air quality and climate change have the best outcomes for both issues. They are also responsible for overseeing the delivery of the Climate Emergency Action Plans.

**The Carbon Management Group** are a group of key council officers who work to reduce the council's own carbon emissions from the buildings owned, transport used and what the council buys.

**The Internal Auditing Team** check that the council is putting the correct staffing, resources, governance and monitoring procedures in place to deliver on the Climate Emergency declaration.

**The West of England Combined Authority (WECA)** has also declared a Climate Emergency. WECA has key responsibilities around Transport, Housing and Economic Development and Skills, and therefore have a big impact on how the region responds to the Climate Emergency. [www.westofengland-ca.gov.uk/climate-emergency-declared-west-england-combined-authority/](http://www.westofengland-ca.gov.uk/climate-emergency-declared-west-england-combined-authority/)

**The West of England Nature Partnership (WENP)** works closely with local authorities and environmental partners across the West of England area to champion and optimise nature recovery across the region: [www.wenp.org.uk](http://www.wenp.org.uk)

## West of England - local authorities

**Bristol City Council, North Somerset and Bath and North East Somerset** have also declared Climate Emergencies and we are working closely with them to deliver our shared aims across the region.

**South Gloucestershire Climate Emergency University Advisory Group** is a group of independent technical experts based at the University of the West of England who check that the action plans we produce cover the right projects and undertake the right action to deliver on the Climate Emergency declaration.

**The Local Strategic Partnership** (as referred to above) this is a longstanding group of major organisations from both the public and private sector. In combination this group influence a significant amount of the areas carbon emissions and are responsible for the area wide delivery of the Climate Emergency Action Plans. [www.ourareaourfuture.org.uk/the-partnership](http://www.ourareaourfuture.org.uk/the-partnership)





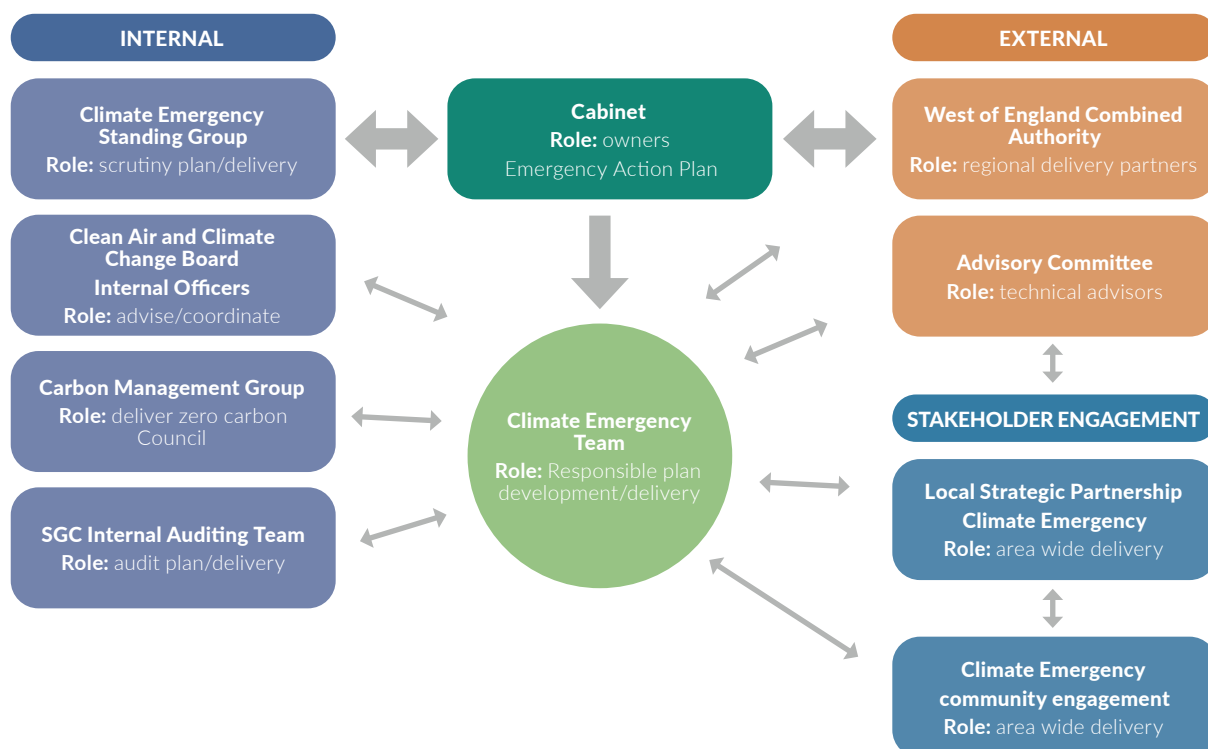
## Climate Emergency Community Engagement Group

This is a public group jointly run by **CVS South Gloucestershire** and South Gloucestershire Council. Anyone in South Gloucestershire can join. This group brings organisations and individuals together working to scale up our area wide response to the Climate Emergency. It has a steering group made up of members of the group from across different communities. For more information visit: [www.southglos.gov.uk/environment/climate-change/climate-emergency-community-engagement](http://www.southglos.gov.uk/environment/climate-change/climate-emergency-community-engagement)

For more information about any of these groups or to join the community engagement group email [Climate.Emergency@southglos.gov.uk](mailto:Climate.Emergency@southglos.gov.uk)

18

### Climate Emergency Action Plan governance structure



## Climate change and equalities

Climate change will affect some groups in society more than others. This will depend on a range of factors such as where you live, your age, your health, your home, how much money you have and how much access to the natural world you have. For example it is likely that the local impacts of climate change will lead to more frequent extreme weather events and cause greater extremes in outdoor temperatures, which can have a worse impact on older people and young children who are generally less able to regulate their body temperature. Those on lower incomes are likely to experience greater impacts from climate change which can be related to poor quality housing, lack of access to nature and poor transport options.

We want to ensure that the Climate Emergency action plans recognise the impacts that different groups will face and that the plans will take great steps to remove any inequalities in the impacts experienced by different groups. Each Climate Emergency action plan will have an equalities impact assessment for the new projects being delivered in the plan to make sure that the projects act on equalities issues.



## Climate Emergency Action Plan - key themes



### Cross cutting

This theme contains projects that deliver benefits across all our Climate Emergency work.

### Buildings/built development

This theme looks at both residential and non-residential buildings and their location, layout, design, construction and the contribution they can make to the health and wellbeing of humans and the natural world.



### Transport and infrastructure

This theme looks at transport projects from walking and cycling, public transport and mileage reduction, to electric vehicles and reducing internal combustion engine car use. Infrastructure is about looking at our roads, bridges, sewage systems, parks and green spaces to reduce emissions, prepare for local impacts and support nature recovery.

### Renewable energy

This theme looks at projects that can increase the amount of renewable energy we have in this area.



### Resources and waste

This theme looks at projects that can reduce emissions from resource waste and how we can move towards a society that no longer wastes resources.

### Green Infrastructure and nature recovery

This theme is about projects that help landscapes, trees, plants and wildlife to thrive for the benefit of people and wildlife.



### Adaptation/resilience

This theme is about preparing for the local impacts of climate change and changing some of the ways that we do things to be more suited to the changing climate.

## How will we know that the plan is the right one to deliver the changes that are needed?

To ensure that the plans put in place will support the council to enable South Gloucestershire to become carbon neutral by 2030, we are seeking independent input into the plans from an external technical advisory committee.

We will also seek public input into our work as we go forward.



## Review of the plans

Each year the Climate Emergency Action Plan will be reviewed to see how much progress has been made. As we only have until 2030 for delivery, if projects are not delivered or do not deliver enough in terms of changes this will mean that more work will be needed in later years. An update will be made every year in December. These reports will be publically available and will come through the councils' decision-making processes at public meetings.

As part of monitoring progress against our aims we will annually report the following indicators in our Quality of Life Report:

- Carbon dioxide emissions from the local authority area
- The proportion of South Gloucestershire's total local energy demand generated from renewable energy installations located within South Gloucestershire

The following sources of data are already used:

- Carbon emissions - Each year the Department of Business, Energy and Industrial Strategy (BEIS) provide a breakdown of CO<sub>2</sub> emissions by local authority area (published 2 years in arrears) and this is used to measure progress against the aim of South Gloucestershire becoming carbon neutral by 2030. We report on this as a percentage reduction from the 1990 baseline emissions figure of 2,073.3 kt Co<sub>2</sub>e.
- Renewable energy generation - a renewable energy annual progress report is produced which calculates the renewable energy capacity installed in South Gloucestershire and the amount of energy generated. This is compared with the current total local energy demand for South Gloucestershire (which includes energy demand from power, heat and transport) to give a proportional figure.

## Funding and finance

We are committing a significant amount of resources into the Climate Emergency response, however we recognise that these resources will need to be supplemented by funding from the private sector, grant funding and income generation strategies. Currently the full costs of delivering our Climate Emergency pledge are not known. Crucially, we need to seek further evidence on the cost of not implementing measures which will lead to further cost impacts down the line. For example, new homes that are not built to a zero carbon standard will need to be retrofitted and any residual emissions offset and this is highly likely to be more costly than building to zero carbon standards from the outset.





## National, regional and local policy

### National change

To deliver our Climate Emergency pledge we will need to work with National Government to develop and implement policies that will support the delivery of our Climate Emergency pledge. Current government policy is for the UK to reach net zero carbon emissions by 2050. Whilst this is later than our Climate Emergency declaration many of the policies needed to deliver the 2050 pledge will support us to deliver our 2030 pledge.

- The national policies that will influence our work on Climate Emergency are as follows:
- National Planning policy
- Transport policy
- Energy policy
- Fiscal (financial) policy
- Agricultural policy
- Environmental policy

## Regional change

Working with the West of England Combined Authority (WECA). WECA also declared a Climate Emergency in July 2019 and have been putting in place plans to tackle the Climate Emergency through the regional work the authority does on economic development, skills, housing and transport strategy. The public can follow WECA's decision making and meetings on the website: [www.westofengland-ca.gov.uk](http://www.westofengland-ca.gov.uk)

Alongside WECA our neighbouring local authority areas of Bristol CC, Bath and North East Somerset and North Somerset have also declared climate emergencies pledging to become carbon neutral by 2030. We are working closely with them to share ideas, data and work jointly on projects.

## Local change

The council needs to use its local policy powers in transport, planning and waste to respond to the Climate Emergency and to enable others to act.

## Working together

We are absolutely aware that the Council cannot deliver this Climate Emergency pledge without the shared commitment and action of every single person in this area.

We wish to show leadership in action on climate change and to enable others to act and provide a coordination role but we are aware that we cannot be and that we are not the only leaders. Many people from our community are taking leadership roles within their own organisations and communities and we need many more people to do this.

We will be working through our Local Strategic Partnership that has the membership of key organisations and businesses from our communities.

However, we recognise that we need leaders to come forward from all groups including:

- Business and commerce
- Communities
- Individuals
- Faith groups
- Youth groups
- Voluntary and community sector
- Public health sector
- Education sector
- Agricultural sector



Not only do we need leaders from across the area but we need to come together as a society to scale up the changes to the speed of the transition required.

We aim to work with people in all these different groups and structures within our society and during the first year of delivering the plan we intend to develop a communications and stakeholder engagement plan.

To find out the latest about what we are doing and how you can get involved please visit: [www.southglos.gov.uk/climatechange](http://www.southglos.gov.uk/climatechange)

Sign our South Gloucestershire Climate Emergency Pledge

If you would like to contact us to tell us about what you/your group are doing at: [www.southglos.gov.uk/environment/climate-change/climate-emergency/](http://www.southglos.gov.uk/environment/climate-change/climate-emergency/)

## Delivery

This strategy sets out the plan for South Gloucestershire to transform our area in response to climate change. The route for delivering actions will be

detailed in delivery plans, which will be developed and acted on. To deliver we will need:

- Committed, collective, and collaborative leadership from across our area lead by our Local Strategic Partnership and our network of partner organisations, and communities
- Active engagement with residents, businesses and organisations across South Gloucestershire.

## Climate Emergency Action Plans

Every year for 10 years leading up to 2030 a Climate Emergency Action Plan will be published with this strategy document and all plans will be held online

To contact the Climate Emergency Team email: [Climate.Emergency@southglos.gov.uk](mailto:Climate.Emergency@southglos.gov.uk)

## Appendices

Appendix 1: South Gloucestershire Climate Emergency Declaration

Appendix 2: Climate Emergency Year 1 Action Plan

Appendix 3: Climate Emergency Year 1 Action Plan (Climate Emergency Budget)

# Appendix 1:

## SOUTH GLOUCESTERSHIRE COUNCIL TO DECLARE A CLIMATE EMERGENCY

### Joint Motion: **South Gloucestershire Council to declare a Climate Emergency and sign the UK100 Pledge**

#### **This Council notes:**

1. That runaway climate change constitutes an existential threat to human society and life on Earth;
2. That humans have already caused irreversible climate change, the impacts of which are being felt around the world;
3. That average global temperatures have now increased by 1°C above pre-industrial levels;
4. That, according to the Intergovernmental Panel on Climate Change (IPCC) special report published in January 2019, the world is now on track to overshoot the Paris Agreement's 1.5°C limit before 2050 – the consequences of which would be dire and irreversible;
5. That, consequently, it is no longer adequate to think of climate change as a potential future threat, but rather, it must now be treated as a real and present danger to the lives and life-chances of people now living as well as to those yet born, and to the natural world;
6. That the IPCC report tells us that limiting global warming to 1.5°C may still be possible – but only with ambitious action from national and sub-national authorities, civil society, the private sector, and local communities;
7. Earlier this year, the Committee on Climate Change has said that the UK can reach Net Zero by 2050 and set out the required steps to achieving this;
8. Governments and Councils are declaring a 'Climate Emergency' across the world and are committing resources to address this emergency;
9. That South Gloucestershire Council is now the only constituent authority within WECA not to have declared a Climate Emergency and signed the UK100 Pledge.

#### **This Council further notes that:**

1. This South Gloucestershire Climate Change Strategy 2018-2023, which was published on the same day at the IPCC report, currently outlines an emissions reduction of 80% by 2050, which at that time was in line with existing UK Government targets;
2. On June 12 2019 the government announced to amend the current UK greenhouse gas emissions reduction target of an 80% reduction by 2050 to cut greenhouse gas emissions to almost net zero by 2050;
3. In 2016, South Gloucestershire's emissions were measured to be 41% lower than in 1990, which is in line with the national decline in emissions;



4. The Council's direct emissions are now 50% lower than in the baseline year 2009/10;
5. The Council's direct emissions represent 1.32% of the total emissions for South Gloucestershire, but the Council has the ability to have significant influence over around 40% of emissions through planning for housing and transport, waste management and through demonstrating leadership and partnership working with the wider community;
6. The emissions for South Gloucestershire are equal to 4.4 tonnes for each resident, 35% of emissions came from industry and commercial sources, 32% from domestic sources, and 33% from road transport (excluding motorways);
7. The Government currently uses the independent Climate Change Committee - a strong model that is signed up to by all political parties to offer guidance which can be emulated at a local level through Scrutiny Commission;
8. Action plans are currently being compiled, meaning any further improvements to targets could be integrated into future work – for example, existing procurement frameworks have a social value, which looks at environmental benefits, among others, but this could be given further weight.

**Council therefore resolves to:**

1. Declare a Climate Emergency;
2. Pledge to provide the leadership to enable South Gloucestershire to become carbon neutral by 2030;
3. To lobby the Government and DEFRA, through the Council and our MPs, to reassess policy and investment to provide the tools to achieve Net Zero by 2030 and to provide assistance in the delivery of the Council's timeline through new powers and resources;
4. Sign up to the UK100 Pledge to provide the strategic community leadership needed to enable our communities to achieve 100% clean energy across all sectors;
5. Request that the Cabinet takes steps to identify work streams and budgets with the aim of making South Gloucestershire Council carbon neutral by 2030, across all functions, as our contribution to fighting climate change;
6. Request Cabinet to work with the West of England Combined Authority (WECA) and our West of England partners to produce an ambitious delivery plan for the West of England Energy Strategy to use as a key tool for seeking Government funding to help us deliver our 2030 target;
7. Update the South Gloucestershire Climate Change Strategy to reflect the increased urgency and ambition outlined in this motion, and, with our partners across the community, to develop an action plan and 'route map' to a sustainable, low carbon future for our community and also to reflect the new proposed national target of net zero by 2050;
8. Request an initial progress report to the December 2019 meeting of Council with an annual report on progress to full Council thereafter;
9. To task Scrutiny Commission with forming a Task & Finish group to assess how South Gloucestershire Council can reach Net Zero by 2030 and feed into the initial report to Full Council. This would include producing an additional report analysing the gaps within our current plans to enable the area to meet net zero emissions.

## Appendix 2:

# CLIMATE EMERGENCY ACTION PLAN – FUNDED PROJECTS

This is the list of projects that already have funding within existing budgets.

Climate Emergency theme:

### Cross-cutting

COUNCIL COMMITMENT	PROJECT STAGE
<b>LEAD</b>	
We will embed climate and ecological considerations in the new Council Plan, prioritising climate change, nature recovery, GI and biodiversity in all council strategies - a 'green thread' to operate through all areas of council decision making, influence and operations.	DEVELOP
We will seek advice to guide treasury management investment decisions to be made in response to the Climate Emergency.	PREPARE
We will further embed climate and ecological considerations in Council procurement activity and our supply chain.	DEVELOP
We will develop a Clean Air Action Plan that aligns with the Climate Emergency Action Plans.	DEVELOP
We will scope the setting up of a Green South Gloucestershire Fund for South Gloucestershire which receives contributions from developers, businesses and residents for investment in renewable energy projects, retrofitting projects, green infrastructure and habitat/biodiversity projects, for example.	DEVELOP
Preparation of a Climate Emergency Strategy Document.	DEVELOP
Monitoring, review and reporting including the preparation of the annual progress report on Climate Emergency.	DEVELOP
<b>ENABLE</b>	
We will continue to lobby Government in areas where policy direction or change is required to help us address the Climate Emergency.	DEVELOP
We will incorporate Climate Emergency and nature recovery principles into the emerging West of England Cultural Strategy.	DEVELOP

## COUNCIL COMMITMENT

## PROJECT STAGE

INSPIRE	
We will incorporate Climate Emergency and nature recovery principles into our new Economic Development Strategy (2020-2024).	IMPLEMENT
We will support the Community and Voluntary Sector to deliver a climate change focused conference – A Climate of Change and produce Environmental Standards Toolkit.	IMPLEMENT
We will continue to support the work of the Centre for Digital Engineering, Technology and Innovation through our WECA membership to deliver outcomes which could have major impacts on the future of transport and clean energy.	DEVELOP
We will continue to support the work of the TEC ARC zone which brings businesses (major and Small to Medium Sized Enterprises) together with academia and public sector to help address issues within a defined area, that not only benefits South Gloucestershire/West of England but can have global impact.	DEVELOP

## Climate Emergency theme: Buildings/built development

### COUNCIL COMMITMENT

### PROJECT STAGE

LEAD	
We will continue funding Severn Wye Energy Agency to deliver the existing Warm and Well Scheme.	IMPLEMENT
We will look to continue to fund the Centre for Sustainable Energy (CSE) to undertake a number of primary school workshops (Key Stage 2 are designed around the issues of energy and climate change, with wind and solar power practical sessions) and outreach events.	IMPLEMENT
We will provide a community outreach worker (Energy Advocate) for 2 years funded through a grant from the Energy Saving Trust to be embedded with Sirona Healthcare from Feb 2020.	IMPLEMENT
We will enforce the Minimum Energy Efficiency Standards (MEES) in private rented accommodation to ensure unless exempt all properties are EPC rated E or above.	IMPLEMENT
We will encourage our HomesWest partners to deliver to high energy efficiency standards for affordable housing schemes, through the use of building materials and methods, such as Modern Methods of Construction (MMC).	DEVELOP
We have switched to a Green Energy Tariff for Council buildings contract starts April 2020 for electricity and gas, and we will work with schools to do this too. New energy contract needs to be in place for 21/22. Schools will be offered opportunity to join in and procure green energy.	DEVELOP
We will use Modern Methods of Construction to deliver the housing on The Grange which typically delivers better energy efficiency, lower carbon emissions and less waste in construction. We will encourage bids to develop the site to deliver energy efficiency standards above current planning policy.	IMPLEMENT
We will undertake a feasibility study to assess the potential for the Bristol & Bath Science Park to become net zero carbon.	PREPARE
Assessment of the impact of achieving net zero carbon on projects currently in the capital programme.	PREPARE



## COUNCIL COMMITMENT

## PROJECT STAGE

ENABLE	
We will work with our partners to put in place a strategic planning document for the West of England area that responds to Climate Emergency and nature recovery.	DEVELOP
We will prepare a robust Local Plan with Climate Emergency embedded into the guiding principles, spatial strategy and policies to ensure that new development responds to Climate Emergency and nature recovery.	DEVELOP
We will continue to progress 'net zero carbon' development policies through the Local Plan and update the supporting evidence base.	DEVELOP
Until the local plan is in place, we will seek to use measures, such as interim planning policies and guidance, to help ensure that all new development coming forward addresses the 2030 carbon neutral South Gloucestershire target.	IMPLEMENT
When making decisions on planning applications we will afford appropriate weight to climate change as a material planning consideration as defined by the Council's declaration of a Climate Emergency, the NPPF and the amended Climate Change Act 2008 (27/06/2019) which takes in to account the revised target of Net Zero Carbon emissions by 2050.	IMPLEMENT
We will progress our master-planning work for Yate town centre and ensure that Climate Emergency and nature recovery considerations are fully incorporated.	DEVELOP
We will progress the regeneration of Kingswood town centre through the 'Love our High Streets' project, maximising low carbon and nature recovery outcomes.	DEVELOP
We will continue to lobby government to recommend changes to Part L of the building regulations match local ambitions.	DEVELOP
We will continue to provide subsidised loans to home owners to improve insulation and install renewable technologies.	IMPLEMENT

## Climate Emergency theme: Transport (and infrastructure/highways)

## COUNCIL COMMITMENT

## PROJECT STAGE

LEAD	
<p><b>Where we are and how we need to get there – getting around South Gloucestershire.</b></p> <p>We will commission evidence gathering to see what is required to achieve our Climate Emergency and nature recovery aims for transport, for input into the JLTP review process. This will seek to estimate the reduction in travel and mode shift required to meet zero carbon by 2030.</p>	DEVELOP
<p><b>Where we are and how we need to get there – carbon neutral fleet.</b></p> <p>We will undertake a baseline carbon footprint study of South Gloucestershire Council fleet, SGC grey fleet (staff car claims private mileage) and school transport. This will consider the business need for travel and mode, consider best practice examples of fleet management approaches.</p>	PREPARE
<p><b>Implement a new Highways Asset Management Plan</b> that adopts low carbon maintenance strategies and promotes the use of verges for carbon sequestration and biodiversity.</p>	IMPLEMENT
<p><b>Monitoring and evaluation</b></p> <p>We will continue to expand monitoring equipment and collect data for transport and air quality to help inform decision making. Using opportunities such as the Umbrella Digital test bed we will look to utilise the most suitable equipment and techniques available.</p>	IMPLEMENT
<p><b>Street lighting programme</b></p> <p>We will continue to roll out the Street Lighting LED replacement programme.</p>	IMPLEMENT
<p><b>Delivery of walking and cycling infrastructure</b></p> <p>We will deliver the Cribbs – Patchway New Neighbourhood Cycle links package (part of the Local Cycling Walking Infrastructure Plan).</p>	IMPLEMENT
<p><b>Delivery of Metrobus extension</b></p> <p>We will deliver the Cribbs/Patchway Metrobus extension infrastructure to extend Metrobus from Bristol Parkway station to the new neighbourhood.</p>	IMPLEMENT
<p><b>Delivery of Park and Ride facility for Yate</b></p> <p>Design and deliver a Park and Ride facility for Yate to intercept journeys made by car and enable people to transfer to more sustainable modes. Build to best practice design.</p>	DEVELOP

## COUNCIL COMMITMENT

## PROJECT STAGE

ENABLE	
<b>Increase bus patronage</b> We will consult on and adopt a bus strategy to identify future investment in mass transport and network improvement.	DEVELOP
<b>Prioritise walking and cycling</b> We will consult on and adopt a “local walking and cycling and infrastructure plan” for towns and urban areas.	DEVELOP
<b>Rail investment</b> Deliver Metrowest improvements to provide half hour frequency on suburban rail network and new rail stations at North Filton and Henbury. We will continue to work with partners to deliver a new railway station at Charfield to be opened by 2024.	DEVELOP
<b>Deliver behaviour change</b> We are delivering a package of travel behaviour change measures to communities, businesses, schools through developer contributions and Access West Programme 2021/22.	IMPLEMENT
<b>Work Collaboratively with our Supply Chain</b> to reduce streamline operational activities to reduce avoidable carbon in our maintenance and management of highways and open space infrastructure.	DEVELOP
<b>Continue to lead in the Highways Sector on Resilience and Adaptation</b> through the Association of Directors for Environment, Economy, Planning and Transport, Local Government Technical Advisors Group and South West Highways Alliance work. Contributing to National Guidance and new approaches.	DEVELOP

## Climate Emergency theme: **Renewable energy**

### COUNCIL COMMITMENT

### PROJECT STAGE

<b>LEAD</b>	
We will undertake a feasibility study with South West Energy hub for solar PV on waste sites, community farm and council owned car parks.	EMERGENCY RESPONSE
We will continue to provide subsidised loans to home owners for renewable technologies (Wessex CIC loans). * SEE BUILDINGS? BUILT DEVELOPMENT.	TRANSITION
We will prioritise Solar PV investment on council owned built assets and infrastructure, avoiding undeveloped land particularly with good natural capital value including high grade agriculture land.	EMERGENCY RESPONSE
We propose to develop a business case for Council-led renewable energy development and investment.	EMERGENCY RESPONSE
<b>ENABLE</b>	
We will undertake a renewable energy resource assessment study to inform Local Plan policy and to safeguard suitable areas for renewable energy installations. The study will also inform South Gloucestershire Council led renewable energy development decisions.	PREPARE
We will lobby Government to seek the removal of planning barriers to onshore wind development.	DEVELOP
<b>INSPIRE</b>	
We propose to participate in a West of England Solar Together solar PV bulk buying scheme for domestic retrofit.	IMPLEMENT



## Climate Emergency theme: Green infrastructure and nature recovery

## COUNCIL COMMITMENT

## PROJECT STAGE

LEAD	
<b>West of England Green Infrastructure Strategy</b> We will continue to work with partners on the West of England Green Infrastructure Strategy preparation and delivery.	DEVELOP
<b>South Glos Green Infrastructure Strategy &amp; Action Plan</b> We will complete, consult on and adopt the South Gloucestershire Green Infrastructure Strategy and Action Plan, to optimise GI asset management for climate change, nature recovery, health and community adaptation, mitigation and resilience.	DEVELOP
<b>Biodiversity net gain (BNG) and district licensing</b> We will consider the evidence and recommendations of consultants regarding the West of England application of Biodiversity Net Gain and District Licensing ahead of the new Environment Bill legislation.	DEVELOP
<b>Ash Die Back Action Plan</b> We will develop and implement an Ash Dieback Action Plan including assessment, prioritisation, works and replanting recommendations.	DEVELOP/ IMPLEMENT
ENABLE	
<b>Kingswood Park Lottery Bid</b> We will submit a £2.5 million National Lottery heritage Fund bid for Kingswood Park – to conserve and enhance the park and engage the local community.	IMPLEMENT
<b>Green South Gloucestershire – Green Infrastructure and Nature Recovery Portfolio</b> We will scope development of a GI and nature recovery investment portfolio as part of the Green South Gloucestershire Fund, this will include tree planting and habitat creation, restoration and enhancement for carbon sequestration, sponsorship and dedication e.g. 'a hectare of wildflower meadow', 'a km of new hedgerow', tree planting, engagement projects etc. This will be a key funding mechanism for scaling up our Climate Emergency Action Plan work.	DEVELOP
<b>River Frome reconnected</b> We will continue to deliver the River Frome Reconnected Project to create a connected river catchment where people, communities and nature are thriving and resilient.	IMPLEMENT

## Climate Emergency theme: Resources and waste

### COUNCIL COMMITMENT

### PROJECT STAGE

LEAD	
<b>Strategy</b> We will adopt the South Gloucestershire's 'Resource and Waste Strategy 2020 and Beyond' with ambitious targets to build on existing success and drive recycling to 70% with zero to landfill by 2030. We will complete and publish an annual review of performance against the aims of the Resource and Waste Strategy 2020 and Beyond.	DEVELOP/ IMPLEMENT
<b>West of England Strategy and Circular Economy</b> With our West of England partners, we will publish a strategy that sets out how our Waste Partnership will continue to work together to make the most efficient use of resources and develop a circular economy in the West of England.	DEVELOP
<b>Future delivery model</b> We will commence planning work to ensure interim arrangements for when our Private Finance Initiative contract with Suez comes to an end in 2025 support the council aim to be carbon neutral by 2030.	DEVELOP
<b>Carbon emissions baseline</b> Update carbon model and test actions plans to ensure driving service to net carbon gain.	PREPARE
ENABLE	
<b>Mangotsfield</b> We will develop Mangotsfield household waste and recycling centre to include a new slip road to reduce traffic congestion and provide biodiversity offset measures.	IMPLEMENT
<b>Processing and Haulage</b> We will review and implement changes to waste processing facilities and haulage to reduce distance travelled and carbon.	DEVELOP/ IMPLEMENT First phase to be implemented 2020 further changes 22-23
<b>North Fringe Site</b> We will open a new waste and recycling centre with reuse facilities to support the new housing developments in the north fringe of South Gloucestershire.	IMPLEMENT
<b>Tree Planting</b> We will plant 5,000 trees at a closed landfill site to create future woodland and carbon offset.	IMPLEMENT Due to be completed 2020 transition/ scaling up activity

## COUNCIL COMMITMENT

## PROJECT STAGE

INSPIRE	
<b>Clean streets</b> We will continue to support and promote voluntary groups in clean street campaigns such as the spring clean.	IMPLEMENT
<b>Behavioural change</b> We will continue to engage with residents to drive behavioural change including a campaign to reduce food waste.	IMPLEMENT
<b>Share success</b> We will share successes with our communities and inspire them to inspire others to build on that success, whilst supporting actions to address the climate change emergency.	IMPLEMENT

## Climate Emergency theme:

### Theme: adaptation and resilience

## COUNCIL COMMITMENT

## PROJECT STAGE

LEAD	
We will continue to utilise the Highways Infrastructure Resilience Assessment Modelling tool to inform highway management and related works.	IMPLEMENT
We will assess surface water flooding risks updating mapping for the Yate and Chipping Sodbury areas.	DEVELOP
ENABLE	
We will continue to work on new local plan policies and guidance to ensure new development mitigates and adapts to the risks from climate change.*See Buildings/ Built Development	DEVELOP

## Appendix 3:

# CLIMATE EMERGENCY ACTION PLAN

## – YEAR 1 (2020/21)

The Council Budget for 2020/21 approved in February 2020 allocated £1.7 million over the 4 year Medium Term Financial Plan (MTFP), in addition to the £85k allocated to early Climate Emergency investments in October 2019 and investments through the Capital Programme. In addition, funding has been allocated through the Capital Programme to undertake green initiatives that support the Climate Emergency through the use of Community Infrastructure Levy (CIL) as well as the proposed Property & Land Investment Fund having a strong focus on non-financial benefits such as carbon offsetting and biodiversity.

In terms of CIL funding, the budget earmarked that £1.5 million is used each year to support the Climate Emergency with an indicative split across the following areas:

- Green Schools £500k
- Green Communities and Open Spaces £500k
- Green Transport £500k

The following table presents a list of priority projects for Year 1 (2020/21) to support the response to the Climate Emergency, over and above, the projects identified in Appendix 2 that already have funding within existing budgets. The projects are grouped according to the priority themes, and the Council's role of 'lead', 'enable' and 'inspire'. The specific project details, including cost implications, will be worked up and matched against the available budget.

The projects shaded grey are Capital Expenditure projects. The rest are Revenue expenditure from the Climate Emergency and/or other service area budgets.

## Climate Emergency theme: Cross-cutting

### PLANNED ACTIONS (2020/21)

### PROJECT STAGE

LEAD – in our own operations	
<p>We will seek to use / expand the current Bristol Climate Advisory Board.</p> <p><b>Purpose:</b> Provides independent assessment of our Climate Emergency Plan and technical support.</p>	DEVELOP
<p>We propose to work through the Local Strategic Partnership to take action on the Climate Emergency liaising with key emitters and influencers and setting up a mechanism for receiving technical advice.</p> <p><b>Purpose:</b> key area emitters and influencers agree and act on advanced targets for 2030.</p>	IMPLEMENT
<p>We propose building capacity to put in place a Climate Emergency team to co-ordinate, lead and facilitate projects and work on the Climate Emergency.</p> <p><b>Purpose:</b> Increased capacity required to deliver plan.</p>	PREPARE
<p>We propose developing a communications and stakeholder engagement programme to both inform, share knowledge and facilitate behaviour change in all sectors. E.g 'Switch to a domestic renewable energy tariff'.</p> <p><b>Purpose:</b> Area wide engagement and action on Climate Emergency.</p>	IMPLEMENT
<p>To undertake a review of appropriate ISO standards relevant to managing the Council's corporate response to the Climate Emergency and where significant value can be demonstrated, to work toward achieving that standard.</p> <p><b>Purpose:</b> Bring whole organisation in line with globally recognised sustainability standard.</p>	DEVELOP
<p>We will commission a piece of work to identify the most appropriate carbon assessment tool to help us understand the impact of our projects and services and how to address them.</p> <p><b>Purpose:</b> To measure progress and inform decision making.</p>	PREPARE



## PLANNED ACTIONS (2020/21)

## PROJECT STAGE

## ENABLE – a low carbon South Gloucestershire with our programmes, policies and decisions

We will update our area wide carbon baseline data and initiate further research work as necessary to help inform our decision making and evaluate progress against the carbon neutral target.

**Purpose:** Further analysis required to inform Years 2-10 plan.

PREPARE

We will provide all staff and members with carbon and ecological literacy training and integrate these principles into staff and member induction and handbook.

**Purpose:** To upskill staff and members in Climate Emergency principles.

IMPLEMENT

We will explore opportunities for including Climate and Nature emergency messages into our 'One you South Gloucestershire programme (healthy lifestyles) area wide recognising and maximising the co-benefits sustainable/health lifestyles.

**Purpose:** To engage with residents on an area wide basis with complementary messaging to change behaviour.

IMPLEMENT

Set up costs for Green South Gloucestershire Fund – carbon offsetting and natural capital.

**Purpose:** To provide longer term funding for Climate Emergency project delivery.

DEVELOP

## INSPIRE – business and residents to take climate action themselves

We propose to use the South Glos News publication to support the Climate Emergency response.

**Purpose:** To engage with residents on an area wide basis to share knowledge and inspire behaviour change.

IMPLEMENT

We propose to deliver 'Environment and Climate Roadshows' at community events alongside the 'Resources and Waste Roadshow' and hold events at libraries to facilitate behaviour change and to engage with the public on climate actions.

**Purpose:** To engage with residents on an area wide bases with complimentary messaging to change behaviour.

IMPLEMENT

We will support the education sector to develop a Climate Emergency skills strategy.

**Purpose:** To ensure the area has the skills and training available so that the workforce that can take up the jobs that will be created due to the Climate Emergency.

DEVELOP

We will carry out a climate and nature emergency business engagement programme.

**Purpose:** Businesses account for a third of carbon emissions in the area, access to advice and grants will help them reduce their emissions.

IMPLEMENT

## Climate Emergency theme: Buildings/built development

### PLANNED ACTIONS (2020/21)

### PROJECT STAGE

#### LEAD – in our own operations

<p>We propose an in depth council building stock retrofit analysis, including schools, to identify and implement a retrofit work programme.</p> <p><b>Purpose:</b> To identify energy efficiency and renewable energy projects, cost and feasibility that can be implemented on the council building stock.</p>	PREPARE
<p>We will build to high energy efficiency standards, such as Passivhaus, in all council developed schools. E.g. currently planned into the design specification for Elm Park School and Lyde Green School.</p> <p><b>Purpose:</b> To upgrade the energy efficiency of projects that are already underway where the current budget needs a top up to reach higher energy efficiency/low carbon standards.</p>	IMPLEMENT
<p>We propose SGC led development (e.g. schools, community centres &amp; housing) to be at least net zero carbon and aspire to be carbon negative, apply biodiversity net gain and include adaptive features.</p> <p><b>Purpose:</b> To upgrade the energy efficiency of projects that are already underway where the current budget needs a top up to reach higher energy efficiency/low carbon standards.</p>	IMPLEMENT
<p>A review of the potential heat that can be used from the Strategic Heat Network.</p> <p><b>Purpose:</b> To establish the extent of the potential benefit to South Gloucestershire's Climate Emergency aims from the strategic heat network to find out how much heat could be used to retrofit existing housing.</p>	PREPARE
<p>We will explore opportunities to deliver the Emergency Accommodation project on the site at Cranleigh Court Road with improved carbon efficiency.</p> <p><b>Purpose:</b> To upgrade the energy efficiency of projects that are already underway where the current budget needs a top up to reach higher energy efficiency/low carbon standards.</p>	DEVELOP

## PLANNED ACTIONS (2020/21)

## PROJECT STAGE

## ENABLE – a low carbon South Gloucestershire with our programmes, policies and decisions

We propose to significantly expand existing Warm and Well Scheme to tackle retrofitting on an area focused basis using targeted marketing. Maximise take up of Energy Company Obligation (ECO3) funding by boosting promotion of scheme and making sure that those eligible for government grants get them.

**Purpose:** To scale up support for residents to retrofit their homes with energy efficiency measures by leveraging in government grants.

IMPLEMENT

## INSPIRE – business and residents to take climate action themselves

Set up a network of retrofit demonstration homes across the area to promote retrofitting measures, this could include wildlife friendly gardening and 'green open doors' events.

**Purpose:** To give residents the opportunity to see real houses that have been retrofitted and to speak to residents who have had work carried out to give them confidence to carry out retrofit works.

IMPLEMENT

A deep retrofit demonstrator home for social rented sector/partnership with social rented sector.

**Purpose:** To engage registered social landlords to retrofit social housing stock across the area.

DEVELOP

Climate Emergency theme:

**Transport (and infrastructure/highways)**

PLANNED ACTIONS (2020/21)

PROJECT STAGE

**LEAD – in our own operations**

Assess feasibility to scale up travel plan support for schools including assessing the feasibility of providing infrastructure for SGC schools to have electric mini buses.

**Purpose:** To replicate success of Barley Close Primary School increasing low carbon travel to school and to provide infrastructure for electric buses where suitable.

DEVELOP /  
IMPLEMENT

South Glos area wide assessment of EV infrastructure need (local authority to identify needs to address market failures and rural EV provision) and policy development.

**Purpose:** To identify gaps in South Gloucestershire wide provision of EV infrastructure.

PREPARE

Immediately implement the new Verge Management Strategy element of the Green Infrastructure Strategy. To move immediately to sustainable verge management supporting nature recovery.

IMPLEMENT

Highways maintenance carbon emission impact assessment carbon emissions of highway maintenance practices and materials to inform opportunities for reduction.

**Purpose:** Current carbon emissions are not measured and are likely to be substantial we need to understand these to manage and reduce these.

PREPARE

**ENABLE – a low carbon South Gloucestershire with our programmes, policies and decisions**

Taxis - We will develop a plan to 2030 to transition taxis in South Gloucestershire to low carbon alternatives.

**Purpose:** Taxis make up around 1% of vehicles in the area, they are critical to supporting the shift to low carbon travel options, they are a highly visible and licencing can be used to influence the types of vehicle in use.

PREPARE

**INSPIRE – business and residents to take climate action themselves**

We propose to explore an area wide Low Carbon Travel Rewards Scheme and trial measures to deprioritise private car use.

**Purpose:** To decrease car use for short journeys and incentivise low carbon travel options.

IMPLEMENT

Climate Emergency theme:  
**Renewable energy**

## PLANNED ACTIONS (2020/21)

## PROJECT STAGE

<b>LEAD – in our own operations</b>	
We will carry out a study of the opportunities for Solar PV on Schools, and other Council owned buildings and explore use of power purchase agreements. Purpose: To identify energy efficiency and renewable energy projects, cost and feasibility that can be implemented on the council building stock.	PREPARE
We will explore the opportunities for Council-led renewable energy development. Purpose: To increase renewable energy provision and encourage others to do so with their own land.	DEVELOP
<b>ENABLE – a low carbon South Gloucestershire with our programmes, policies and decisions</b>	
We will work with community energy groups to identify and safeguard sites for solar PV and wind, and explore opportunities to set up Power Purchase Agreements to enable them to secure finance. Purpose: To enable increases in renewable energy provision.	DEVELOP



Climate Emergency theme:  
**Green infrastructure and nature recovery**

## PLANNED ACTIONS (2020/21)

## PROJECT STAGE

## LEAD – in our own operations

### TREE PLANTING PROGRAMME TO DOUBLE TREE COVER BY 2030

Create capacity and capability to double tree cover (plus replacement planting due to Ash dieback losses) in South Gloucestershire through a programme of tree planting on council and third party land. Programme of tree planting on council land and highway verges. Co-ordination of tree planting projects, offset/mitigation/ sponsorship planting and hedgerow restoration. First projects to be used for case studies and showcase work to engage potential tree planting investors leveraging future income.

**Purpose:** To work towards doubling tree canopy cover by 2030 and ensure there is the right planting in the right place with appropriate after care, aligned with our nature recovery network priorities.

DEVELOP/  
IMPLEMENT

### TREE PLANTING MANAGER

**Purpose:** To co-ordinate and deliver work towards doubling tree canopy cover by 2030.

DEVELOP/  
IMPLEMENT

## ENABLE – a low carbon South Gloucestershire with our programmes, policies and decisions

**NEW SUPPLEMENTARY PLANNING DOCUMENTS SPD** Adopt a suite of SPDs covering: Sustainable drainage and watercourse management; Biodiversity Net Gain; Trees on development sites; Green Infrastructure; Public Rights of Way. Documents will influence all future development approaches to green infrastructure. **Purpose:** To provide a clear position, requirements and guidance for working with developers to protect and enhance biodiversity and nature recovery.

DEVELOP

PLANNED ACTIONS (2020/21)	PROJECT STAGE
<p><b>GREEN INFRASTRUCTURE MAPPING AND NATURAL CAPITAL ASSESSMENT OF SGC GI ASSETS</b></p> <p>Natural capital value assessment of all council owned and managed Green Infrastructure Assets to inform decision making and future asset management. Enable natural capital valuation by identifying and mapping key current ecosystem services and new opportunities including: contribution to carbon sequestration, sustainable drainage, cooling, shading, drought resilience, air quality, community, health and well-being etc.</p> <p><b>Purpose:</b> Natural Capital Assessment - to assess financial contribution and value of green infrastructure to inform decision making, application of mitigation hierarchy methodology, new natural capital investment opportunities and full capture replacement costs for any losses. Mapping to protect, and enhance existing resource.</p> <p><b>HABITAT SURVEYS FOR KEY SITES</b></p> <p>Current data is 30 years old. We propose phase 1 habitat surveys for key sites in scope along our nature recovery network/GI corridors and designated sites, including resurveying Sites of Nature Conservation Interest, to inform and underpin:</p> <ul style="list-style-type: none"> <li>• Calculation of natural capital value of assets to inform decision making.</li> <li>• Work to improve and increase our Nature Recovery Network – bigger, better, more and joined habitat.</li> <li>• Application of biodiversity net gain.</li> </ul> <p><b>Purpose:</b> We cannot protect and enhance our existing priority sites and nature recovery network without up to date information.</p>	DEVELOP
<p><b>SOUTH GLOS GREEN INFRASTRUCTURE STRATEGY &amp; ACTION PLAN</b></p> <p>We will deliver, the South Gloucestershire Green Infrastructure Strategy and Action Plan, after consulting and adopting, to optimise GI asset management for climate change, nature recovery, health and community adaptation and resilience.</p> <p><b>Purpose:</b> Enact plan to deliver GI, nature recovery, biodiversity and Climate Emergency goals.</p>	DEVELOP/ IMPLEMENT
<p><b>INSPIRE – business and residents to take climate action themselves</b></p>	
<p><b>NATURE RECOVERY AND HABITAT EXAMPLAR BEST PRACTICE SHOWCASES ON OPEN SPACES</b></p> <p>Create exemplar nature recovery and habitat creation and restoration showcase examples of best practice including on key roadside verges and open spaces to inspire communities, individuals and businesses to adopt similar on their land and/or partner with the council to fund habitat projects. Combined with education and information programme and crowd funding for donations.</p> <p><b>Purpose:</b> To inspire, raise awareness, inform and empower residents, businesses and organisations across South Gloucestershire in practical ways they can help nature and wildlife at home, work places and communities.</p>	IMPLEMENT

## Climate Emergency theme: Resources and waste

### PLANNED ACTIONS (2020/21)

### PROJECT STAGE

LEAD – in our own operations	
<p>On Street Recycling We will provide on street recycling on high streets and high footfall areas.</p> <p><b>Purpose:</b> Reduce emissions of waste to landfill, increase public engagement in waste reduction and awareness of waste as source of emissions.</p>	IMPLEMENT

## Climate Emergency theme: Adaptation and resilience

### PLANNED ACTIONS (2020/21)

### PROJECT STAGE

LEAD – in our own operations	
<p>We propose to work with the Carbon Trust Pathfinder Programme to develop a systematic approach to Adaptation and Resilience in South Gloucestershire.</p> <p><b>Purpose:</b> Independent verification that SGC is taking necessary steps across all service areas to adapt and make South Gloucestershire resilient to the local impacts of climate change.</p>	DEVELOP
<p>Highways Network Weather Resilience Risk Review. Quantify and qualify the weather resilience risk to highways infrastructure. Update of 2014 (UKCP09) work against new climate predictions. Using Highways Infrastructure Resilience Assessment Modelling Tool and latest UK Climate Projections 2018 (UKCP18). Stress test Street Care emergency weather response plans.</p>	IMPLEMENT
ENABLE – a low carbon South Gloucestershire with our programmes, policies and decisions	
<p>We will use our communications channels to help our partners, residents and businesses to adapt and prepare for the likely local impacts of climate change.</p> <p><b>Purpose:</b> Duty to communicate likely local impacts and steps that can be taken to prepare homes, business and protect health.</p>	IMPLEMENT



