

## Appendix A

# Current and Emerging Strategic GI Programmes and Projects

**A.1** To achieve the green infrastructure outcomes set out in the South Gloucestershire GI Strategy: Greener Places, we are working with our partners to prepare, fund and deliver a portfolio of priority GI programmes. This includes 2 broad categories of strategic GI programmes:

- Locality programmes – in a particular location or area, such as the River Frome Reconnected and Kingswood Park restoration programmes (listed in Table A.1).
- Network scale programmes – for a specific type of green infrastructure or habitat type, such as our programmes to change highway verge management and doubling of tree canopy cover (listed after Table A.1).

**A.2** For each programme, more detailed projects are being prepared to deliver GI investment within an area, or across the network.

**A.3** All programmes are at different stages, and more programmes will be added in the future in response to new priorities and opportunities.

**Table A.1: Current strategic GI locality programmes (Produced January 2022, updated March 2023).**

Strategic GI Programmes	Description	Location/Related GI Corridor	Stage of Development (as of March 2023)
<p><b>Common Connections</b></p>	<p>To restore and connect habitat including linking registered common land, unimproved grasslands, woodlands and associated habitats along the South Gloucestershire/East Bristol urban fringe.</p> <p>Habitat improvements will include:</p> <ul style="list-style-type: none"> <li>■ Reintroduction of grazing;</li> <li>■ Wildflower seeding coupled with plug and bulb planting;</li> <li>■ Native tree planting;</li> <li>■ Creating community orchards;</li> <li>■ Restoring and planting new hedgerows;</li> <li>■ Creating and improving ponds; and</li> <li>■ Setting up hundreds of nest boxes and shelters for wildlife.</li> </ul>	<p>Bristol Eastern Fringe and Corridor D.</p>	<p>Approaching the end of the first project year, over 30,000 square metres of new wildflower meadow areas created at 8 different locations, 100 ‘standard’ and ‘extra heavy standard’ trees planted including several new orchard areas, over 1,000 tree whips planted (including 200 linear metres of new hedges), a large new pond complex created, and existing ponds improved, plus 3 new pollinator friendly shrub beds (100 square metres), access</p>

## Appendix A Current and Emerging Strategic GI Programmes and Projects

Strategic GI Programmes	Description	Location/Related GI Corridor	Stage of Development (as of March 2023)
			improvements including new footpaths, gates and benches. Hundreds of school children, and hundreds of adult volunteers have taken part in hands conservation work to support nature recovery.
<b>Bristol Urban Fringe Grassland Creation (B-Lines)</b>	Creation of new grassland habitat along Bristol's urban fringe to link up existing areas of grassland in an arc extending from Upton Cheyney to the south of Chipping Sodbury. The programme would link with the Common Connections project and existing B-Lines.	Bristol Eastern Fringe and Corridor D	In development as of July 2022.
<b>River Frome Reconnected</b>	To restore and improve the health and resilience of the Bristol Frome river and its catchment, and make sure the river can be accessed and enjoyed by all.  Key projects listed below include:	Corridor C	Delivery phase, Catchment Plan and project portfolio prepared, and funding being actively sought for implementation.

## Appendix A Current and Emerging Strategic GI Programmes and Projects

Strategic GI Programmes	Description	Location/Related GI Corridor	Stage of Development (as of March 2023)
	1. Frome Valley Walkway (FVW): route enhanced for multi-users.	Initial focus around Yate, with aim to enhance the length of the FVW from source at the Cotswold scarp to central Bristol	Concept phase, audit of the FVW route has been undertaken, awaiting final report.
	2. Natural Flood Management (NFM) in headwaters: working with landowners to deliver nature-based solutions to improve catchment resilience, water quality and locally reduce flooding.	Potentially Laddon Brook, and Bradley Stoke Brook (overlapping with Corridor G)	Project being delivered through the Defra funded Resilient Frome <a href="#">[See reference 24]</a> project.
	3. Environment Agency flood attenuation area, with potential nature recovery network (NRN) benefits.	Potentially Chipping Sodbury.	EA currently developing Outline Business Case.
<b>River Frome Nature Reserve</b>	The aspiration for this project is to create a publicly accessible nature reserve on the River Frome in central South Gloucestershire. The reserve would enable the creation of wood pasture parkland and various riparian habitats.	Corridor C / G	In development as of July 2022. Land assembly has begun and initial work to scope out potential design and future funding sources is ongoing.
<b>Lower Woods &amp; Vale</b>	To create additional buffer habitats around Lower Woods and improve woodland links to Cotswold	Corridor D	In concept as of July 2022.

**Appendix A** Current and Emerging Strategic GI Programmes and Projects

Strategic GI Programmes	Description	Location/Related GI Corridor	Stage of Development (as of March 2023)
	<p>woodlands. Lower Woods is the most extensive area of ancient woodland in the West of England.</p> <p>This ties in with the Hawkesbury and Inglestone Common project.</p>		
<p><b>Cotswold Scarp Wildlife Corridor</b></p>	<p>To enhance the ecological connectivity of the Cotswolds Scarp, which provides a corridor between Lower Woods and Bath. It would include strategic grassland and woodland creation, as well as a focus on mixed habitats such as wood pasture and scrub that will contribute to both the woodland and grassland networks, building on existing stepping stones such as Dyrham Park. It would build on the Cotswolds Nature Recovery Plan and be mindful of the Scarps ecological and landscape character.</p>	<p>Corridors D and E</p>	<p>Development stage (as per Cotswold National Recovery Plan)</p>
<p><b>Safe passages for nature over the M4</b></p>	<p>This project would see strategically placed wildlife tunnels or green bridges to address severance issues within the Cotswold National Landscape caused by the M4. An example location is around the woodland and</p>	<p>Corridor E</p>	<p>Ongoing / in development as of July 2022. Some interventions have already been delivered; however,</p>

## Appendix A Current and Emerging Strategic GI Programmes and Projects

Strategic GI Programmes	Description	Location/Related GI Corridor	Stage of Development (as of March 2023)
	grassland strategic network at Tormarton.		further scoping is needed to identify additional future interventions.
<b>Safe passage for nature over the M5</b>	Similar to the above project, this will see strategically placed wildlife crossing points across the M5, including wildlife tunnels and green bridges. An example location being explored is around Thornbury.	Corridor B	Ongoing / in development as of July 2022. Some interventions have already been delivered; however, further scoping is needed to identify additional future interventions.
<b>Severn Vision</b>	As highlighted within the WENP Nature Recovery Network Prospectus, there is opportunity to improve, restore and create marine habitat, including mudflats and saltmarshes across the Severn Estuary. The realignment of traditional 'hard' flood defences will enable the expansion of saltmarsh and additional high-tide roosts for wading birds.	Corridor A	In development with a framework being delivered by the Somerset Wildlife Trust.
<b>String of Pearls</b>	To connect and restore wetland habitat of the protected Ramsar area of	Corridor D	Ongoing. Some construction of wetlands at

## Appendix A Current and Emerging Strategic GI Programmes and Projects

Strategic GI Programmes	Description	Location/Related GI Corridor	Stage of Development (as of March 2023)
	the low-lying vales and coast of the Severn Estuary to support resilience to the changing climate in this area and improve biodiversity and public access.		Northwick & Hallen Marsh commenced in 2020 as part of the flood defence scheme. The wider 'String of Pearls' programme as a legacy of the previously delivered 'A Forgotten Landscape' project, is at concept stage and awaiting funding.
<b>Oldbury Settlement Lagoon</b>	The creation of a settlement lagoon at Oldbury Magnox to act as a high-tide roost for wading birds which will provide alternative habitats and feeding areas during high tides. This will form part of the decommissioning of the Oldbury Power Station and is linked with the String of Pearls programme.	Corridor A	Shovel-ready (as of July 2022). Funding has been secured which also includes a sum for future management and enhancing visitor facilities.
<b>Littleton Brick Pits Expansion</b>	An Avon Wildlife Trust reedbed reserve which is an important feeding and resting place for migratory birds. This project would	Corridor A	Conceptual stages. The site is already within ownership of the Avon

## Appendix A Current and Emerging Strategic GI Programmes and Projects

Strategic GI Programmes	Description	Location/Related GI Corridor	Stage of Development (as of March 2023)
	enhance and expand wetland habitats whilst also providing better access for visitors. This project forms part of the String of Pearls programme.		Wildlife Trust, however funding still needs to be secured.
<b>Avonmouth and Severnside Enterprise area (ASEA) Flood Resilience and Ecological Mitigation project – Severnside</b>	To improve flood defence, wetland habitat and public access across the Severnside area.	Corridor D	Implementation, set to be completed in 2026/7.  Wetland scarps formed as part of the mitigation for the flood defence project, also forms part of the wider 'String of Pearls' programme.
<b>WaterSpace</b>	Partnership programme of work to improve the green spaces and rights of way along the River Avon and the Kennet & Avon Canal.	Corridor F	Development stage – project officer based in Bath and NE Somerset co-ordinating programme development. Group continues to be active on social media.



## Appendix A Current and Emerging Strategic GI Programmes and Projects

Strategic GI Programmes	Description	Location/Related GI Corridor	Stage of Development (as of March 2023)
<b>Hawkesbury &amp; Inglestone Common</b>	Higher Tier Countryside Stewardship Scheme, also including Assley and Hareley Commons, which facilitates ongoing management for the benefit of all users, together with habitat enhancement.	Corridor D	Delivery stage. Some tree planting was undertaken by LUC at Hawkesbury and Inglestone Commons, arranged by Forest of Avon Trust in Spring 2023. The commons continue to be positively managed.
<b>Kingswood Park</b>	To restore and enhance the heritage, landscape and facilities of Kingswood Park to create an accessible green space which is resilient to the changing climate and where people can come together. The project will also link to the Kingswood Town Centre regeneration programme, making Kingswood a better place to live, work and visit.	Within urban area of Kingswood, connections with Corridor D.	Development stage – development funding awarded by the National Lottery Heritage Fund to prepare a full project plan. Finalised project plan to be submitted to National Lottery Heritage Fund imminently to seek £2.5 million to progress

## Appendix A Current and Emerging Strategic GI Programmes and Projects

Strategic GI Programmes	Description	Location/Related GI Corridor	Stage of Development (as of March 2023)
			restoration of the park.
<b>Grimsbury Community Farm</b>	A council owned and managed community farm, providing a key public open space resource and facilities, farming education, skills and training and a showcase for sustainable land management, nature restoration and climate change adaption	Within urban area of Kingswood, connections with Corridor D.	Business Plan at development stage to become financially independent. Within Common Connections programme area.
<b>Yate spur shared use path, Yate</b>	To connect Yate with the Bristol and Bath Railway Path, by providing a continuous off carriageway 'green corridor' for commuting, leisure and recreation.	South of Yate, Corridor D	Development stage. Public consultation was undertaken between March and April 2022, with the Council response published October 2022. There was an overwhelming 96% support for the scheme.
<b>South Gloucestershire Council Wildway</b>	The SGC team have been carrying out desk based assessments to identify clusters of locally designated sites that could be better connected for wildlife through land purchase, land management agreements or	Wildway 1 is within Corridor D Wildway 2 is within Corridor B Wildway 3 is within Corridor C	So far 3 local scale projects have been identified and worked up in the concept stage.

## Appendix A Current and Emerging Strategic GI Programmes and Projects

Strategic GI Programmes	Description	Location/Related GI Corridor	Stage of Development (as of March 2023)
	<p>small scale nature connectivity enhancements like hedgerow restoration, tree planting or wildlife corridor creation. These wildways vary greatly in size and, if instigated, would lead to a bigger, better and more connected landscape for nature recovery. This is not centred on SGC owned land, it is on any suitably located clusters of privately owned designated sites.</p>		
<p><b>Local Nature Action Plans</b></p>	<p>SGC delivery team have been working on the ground with Parish Councils to deliver Local Nature Action Plans (LNAP). The Local Nature Action Plans Guidance provides a steer for town and parish councils to take action against the ecological crisis. LNAPs will support and complement the South Gloucestershire Biodiversity Action Plan.</p>	<p>Across South Gloucestershire and all corridors</p>	<p>Local scale. Guidance has already been produced by SGC and the delivery team are now working with parish and town councils on the ground to deliver their LNAPs.</p>

## Current network scale strategic GI programmes (January 2022)

A.4 Current network scale strategic GI programmes applicable across all the strategic GI corridors and network include:

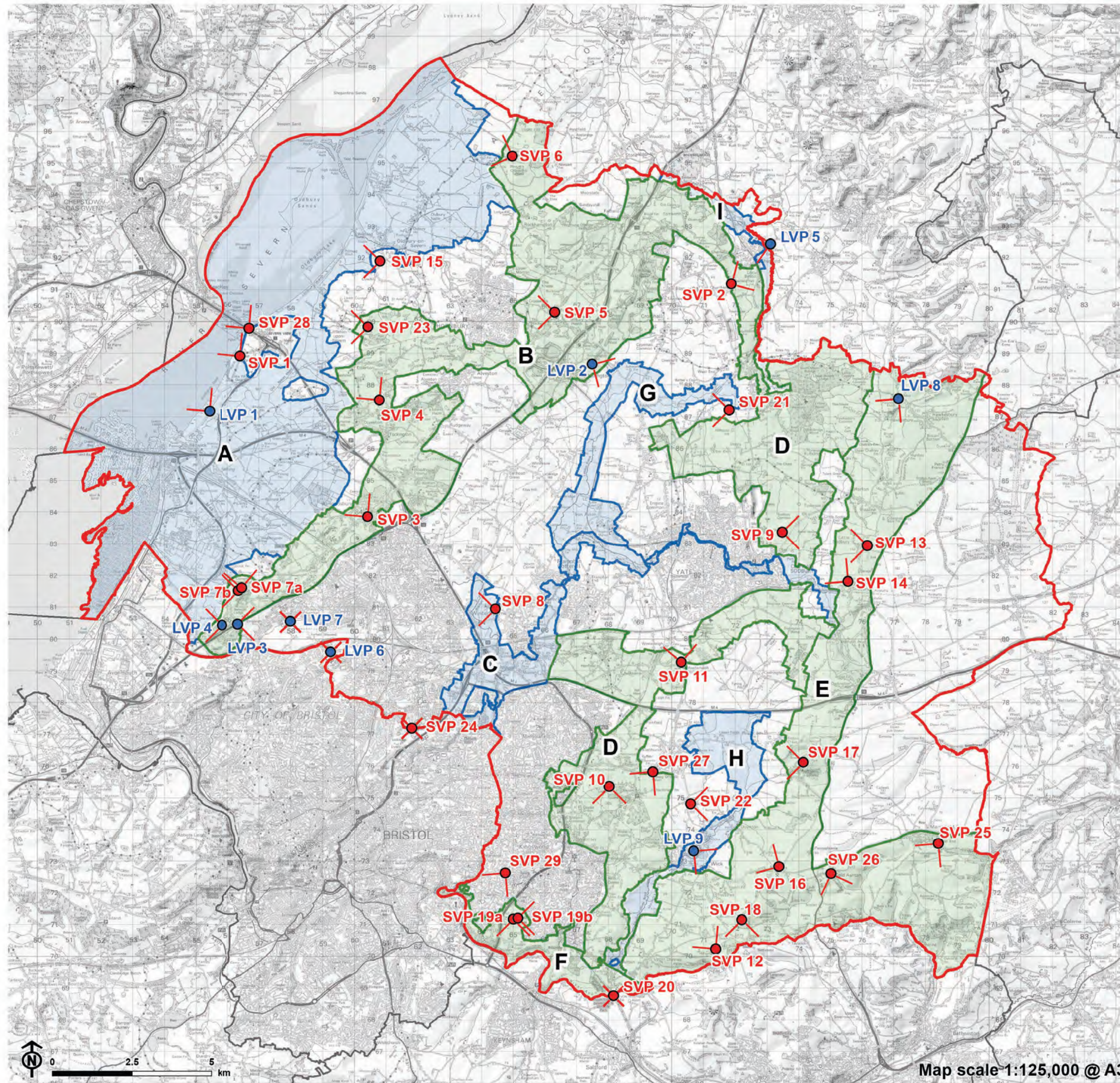
- **Tree planting – doubling of tree canopy cover – development stage**  
To plant and establish trees across South Gloucestershire by 2030, to double tree canopy cover at maturity.
- **Nature Recovery Network – development stage**  
To achieve a bigger, better, more and connected ecological network across our area.
- **Highway verges for nature – development stage**  
Change how we manage highway verges and council owned green spaces to provide more habitat for nature.
- **Retrofit for nature – development stage**  
Make space for nature within existing buildings and the road network.
- **Greener communities – development stage**  
Greening our priority neighbourhood communities to reduce inequalities, support regeneration and improve the environment for people, place and nature.
- **Wild Belt – concept stage**  
Proposed approach for potential wild belt areas to be investigated and locally designated. Capable of operating at different scales, and focusing on woodland, grassland, and wetland strategic networks complementing the South Gloucestershire habitat bank and implementation of BNG.

# Appendix B

## Key Viewpoints

**B.1** The key strategic and local viewpoints in South Gloucestershire are provided in Table B.1 and B.2. The ID number corresponds to the strategic viewpoint number included in the audit for each corridor (in Chapters 6-14 inclusive). The table is supported by a map of strategic viewpoints.

**Figure B.1: Map of Strategic Viewpoints**



South Gloucestershire

Neighbouring local authority

**Viewpoint**

**Type**

- Local viewpoint
- Strategic viewpoint

**Viewpoint angle**

- Panoramic view
- Illustrative viewpoint angle

**Corridor name**

- A Shepperdine-Oldbury on Severn-Severn Beach (*Severn Estuary and Levels*)
- B Charfield-Alveston-Hallen (*Western Scarp/Severn Ridges*)
- C Winterbourne-Kendleshire-Yate (*River Frome Corridor*)
- D Wickwar-Westerleigh-Bitton (*Westerleigh Vale/Oldland Ridge/East Fringe*)
- E Hawkesbury-Upton Cheyney-Ashwicke (*Cotswold Scarp and Ashwicke Ridges*)
- F Hanham Green-Hanham Abbots-Bitton (*Avon Valley*)
- G Wickwar-Iron Acton (*Ladden*)
- H Hinton-Doynnton-Bitton (*Boyd Valley*)
- I Huntingford-Charfield-Wickwar (*Little Avon River Corridor*)



Map scale 1:125,000 @ A3

## Appendix B Key Viewpoints

**Table B.1: Strategic viewpoints**

Corridor	Id	Location / place	Description
A	SVP 1	Redwick	Old Passage - panoramic views north and west over Severn Estuary and Severn bridges
B	SVP 2	Charfield	View from Churchend – panorama (north and east)
B	SVP 3	Hortham	View from Almondsbury scenic viewpoint, Over Lane - panorama (over levels landscape north and west)
B	SVP 4	Old Down & Thornbury	Views from Old Down - west and south-west (across levels landscape)
B	SVP 5	Old Down & Thornbury	View from A38/Whitewall Lane junction– north-west (across ‘bowl’ landscape of Thornbury, with Severn estuary beyond)
B	SVP 6	Hill	View from Hill Court (church) and Oldbury levels - south and west
B	SVP 7a and 7b	Spaniorum and Cribbs Causeway	View from Spaniorum Hill – west (wide ranging views across estuary and Pilning levels landscape)
C	SVP 8	Winterbourne	View from Church Lane/Green Lane junction, Winterbourne – views west towards Bradley Stoke and Patchway across valley
D	SVP 9	Chipping Sodbury	View from Sodbury Common – panorama
D	SVP 10	Siston	View from Community Forest path to west of Siston Court – panorama (views west and south)
D	SVP 11	Westerleigh	View north and west from top of Westerleigh Hill across Yate vale and Coalpit Heath
E	SVP 12	Lansdown	View from Hanging Hill/ Lansdown Battlefield – panorama
E	SVP 13	Chipping Sodbury	Little Sodbury – Hill fort - panorama
E	SVP 14	Chipping Sodbury	View from west of Churchyard and PRow at Old Sodbury – Panorama north and west
Outside	SVP 15	Old Down and Thornbury	Saint Arilda’s church Cow Hill – Panorama (north, south and west over Severn vale and Estuary)
E	SVP 16	Marshfield	View from Tog Hill picnic site – Panorama north-south and west
E	SVP 17	Dyrham	View from viewing point at top of deer park – panorama from edge of scarp within the deer park west to vale and to earthworks at Hinton

## Appendix B Key Viewpoints

Corridor	Id	Location / place	Description
E	SVP 18	Wick & Lansdown	View from Freezing Hill – panorama
F	SVP 19a and 19b	Longwell Green	View from Hanham Hills - panorama
F	SVP 20	Bitton	View from Bristol-Bath cycle path – panorama
G	SVP 21	North Yate Vale	View north-west across Yate Vale and Rangeworthy
H	SVP 22	Abson	View from Abson Road south of church – Panorama looking east across valley to Cotswold scarp
B	SVP 23	Old Down and Thornbury	Woodwell Meadow, Littleton Upon Severn – panorama west over Levels landscape and Estuary
Outside	SVP 24	Stoke Park	View from the Dower House Stoke Park – panorama south, east, and west
Outside	SVP 25	Marshfield	View from East End Marshfield – views to south across valley to Henley Hill
Outside	SVP 26	Cold Ashton	View from seating area Cold Ashton – views south across St. Catherine’s valley
Outside	SVP 27	Pucklechurch	View from south-west edge of Pucklechurch – panorama (views south and west across Siston towards Kingswood & Warmley; views south and east towards Cotswolds scarp - Freezing Hill and Lansdown)
Outside	SVP 28	Redwick	View from Severn Viewpoint – panorama over Estuary, Wales and north to Oldbury power station
Outside	SVP 29	Kingswood	View from Mount Hill, Hanham – Panorama south and east

**Table B.2: Local viewpoints**

Corridor	Id	Location / place	Description
A	LVP 1	Redwick	View from Severn Way – panoramic views over Severn bridges and Estuary to Wales
B	LVP 2	Old Down & Thornbury	View from Baden Hill, Tytherington – panoramic (south and east)
B	LVP 3	Spaniorum and Cribbs Causeway	View from M5 overbridge /gateway at Haw Wood – east (extensive views eastwards across Filton, to east fringe and Cotswolds)
B	LVP 4	Spaniorum and Cribbs Causeway	View from woodland edge north of M5 at Hallen – west and south-west (over estuary and Avonmouth to south-west)



## Appendix B Key Viewpoints

Corridor	Id	Location / place	Description
Outside	LVP 5	Charfield	View from Elbury Hill – panorama west over Charfield and Tortworth beyond
Outside	LVP 6	Filton & Frenchay	View from Filton golf course – panorama north and west
Outside	LVP 7	Spaniorum and Cribbs Causeway	View from earth sculpture south of Lysander Road Cribbs Causeway – panorama, views to south, east and west
E	LVP 8	Hawkesbury Upton	Hawksbury monument – panorama west and north
H	LVP 9	Wick	View from Wick Rocks – View of the Boyd valley and across quarry to Cotswold scarp and Freezing Hill

## Appendix C

# Boundary rationalisation decision-making

**C.1** The list below provides a summary of small-scale instances where the boundary rationalisation process deviated from the three main criteria (as summarised in Chapter 3: Methodology).

### Boundary between Corridors E and H at Doynton

- Problem: Dissecting a Conservation Area.
- Solution: Follow the road and Cotswold National Landscape boundary as this is recognisable on the ground but means Doynton Conservation Area is split into two corridors.

### Boundary between Corridors C and G at Iron Acton

- Problem: Dissecting a Conservation Area.
- Solution: Draw the boundary between the two corridors along the railway, excluding the small extension of the Iron Acton Conservation Area at Algors Manor from Corridor G (north) and thereby including this small extension in Corridor C. The boundary between the corridors then turns west off the railway on the road to Elm Farm, before continuing south-west on the road, tracing the west edge of the River Frome.

### Corridor E at Dodington

- Problem: The Cotswold National Landscape boundary cuts through the Visually Important Hillside.

## Appendix C Boundary rationalisation decision-making

- Solution: Extend the boundary beyond the Cotswold National Landscape boundary to include the Visually Important Hillside (rising scarp) within Corridor E which is one of the reasons behind its importance and purpose.

### Boundary between Corridors D, E and C west of Old Sodbury

- Problem: Dissecting a Site of Nature Conservation Importance.
- Solution: Follow Cotswold National Landscape boundary, the road from Old Sodbury south to Dodington and the Registered Park and Garden boundary, which results in cutting off the easternmost section of the River Frome SNCI (which doesn't follow a recognisable boundary). This easternmost section still sits within a corridor (corridor E).

### Corridor C through Chipping Sodbury and Yate

- Problem: Drawing boundaries of river corridors through settlements where OS mapped boundaries are not always clearly defined.
- Solution: Follow curtilage of houses and gardens where there is no recognisable boundary (e.g., field boundary or road) and also expand the corridor to encompass important designations such as the Conservation Area (despite this meaning the settlement is included within the corridor).

### Boundary between Corridors B, I and D at Wickwar

- Problem: To determine where to draw boundaries between Corridors B, I and D given the south easterly extension of the Little Avon River SNCI. Also, to determine what OS mapped features to use as the corridor boundary.
- Solution: Extend corridor B along the length of corridor I to encompass Wickwar Conservation Area and finish at the road boundary south of Poplar Farm (note this was a large extension to the initial northern corridor B boundary which ended north of Charfield). Continue corridor I boundary to include the entire Little Avon River SNCI to its boundary with Lower

## Appendix C Boundary rationalisation decision-making

Woods SSSI and Wetmoor Complex SNCI. The eastern side of Little Avon River SNCI (along the river course) is used as the eastern boundary of corridor I and western boundary of corridor D given the issue faced with following OS mapped features near Sturt Farm.

### North west boundary of Corridor G south of Stidcot

- Problem: Nearest physical boundary to follow on the ground is small tributary of the Laddon Brook. However, including adjoining grassland habitat either side of the watercourse will contribute towards the functionality of the corridor.
- Solution: Cut across the adjoining field at the two narrowest parts and where aligning with the field corner will allow for easy demarcation when on the ground.

**14.28** This tables below provides a summary of the changes made to the strategic GI corridor boundaries following SGC's Local Plan Stage 2 consultation.

### Tables C.1-C.9: Changes made to the strategic GI corridors following Local Plan Stage 2 consultation

#### Corridor A

Change	Reason
Removal of fields to the north-west of Newton, north of Thornbury.	Removed as part of the district-wide review of 'white land'.
Removal of land in the north of Corridor A around Tranton Lane and Stuckmoor Lane.	Removed as part of the district-wide review of 'white land'.

#### Corridor B

Change	Reason
--------	--------

## Appendix C Boundary rationalisation decision-making

Removal of Cleve Park site to the east of Thornbury.	Planning permission has been obtained.
Removal of Almondsbury Airbase and surrounding land.	Removed as part of the district-wide review of 'white land'.
Removal of fields to the north-east of Almondsbury.	Removed as part of the district-wide review of 'white land'.
Removal of the land to the south of Lower Stone.	Removed as part of the district-wide review of 'white land'.
Removal of land south of Poplar Lane, Wotton-under-Edge.	Completed development site.
Removal of land to the east of Newton, north of Thornbury.	Removed as part of the district-wide review of 'white land'.
Removal of northern settlement edge at Alveston.	Removed as part of the district-wide urban edge interface review.
Removal of land around Lower Marlwood Farm and Beech Farm to the west of Thornbury.	Removed as part of the district-wide review of 'white land'.
Removal of land around Willow Farm to the west of Thornbury.	Removed as part of the district-wide review of 'white land'.
Removal of land to the east of Littleton-upon-Severn.	Removed as part of the district-wide review of 'white land'.

## Corridor C

Change	Reason
Removal of properties on the western edge of Frampton Cotterel around Harris Barton and Park Lane.	Removed as part of the district-wide urban edge interface review.
Removal of properties along Church Lane in Frampton Cotterel.	Removed as part of the district-wide urban edge interface review.
Removal of fields at Hicks Common in Winterbourne.	Removed as part of the district-wide review of 'white land'.
Addition of field at Flaxpits, north of the railway line.	Added to strengthen the connectivity of the Wetland Strategic Network.

## Appendix C Boundary rationalisation decision-making

Removal of land at Harry Stoke strategic sites to the east of Stoke Gifford.	Planning permission has been obtained. Retention of some land adjacent to the M32 and M4 to reflect GI buffers designed in as part of masterplan.
Removal of land to the west of Winterbourne at Church Lane and Beacon Lane.	Removed as part of the district-wide review of 'white land'.
Removal of land south of Swan Lane and properties at Ferndale Farm, west of Winterbourne.	Removed as part of the district-wide review of 'white land'.
Removal of arm to the south of Nibley and west of yate, including unnamed tributary.	Removed as part of the district-wide review of 'white land'.
Removal of land at Waitrose and Barnhill Car Park in Chipping Sodbury.	Removed to reflect completion of this site and the new land use of car parking.
Removal of field north of Mill Lane, west of Old Sodbury.	Removed as part of the district-wide review of 'white land'.

## Corridor D

Change	Reason
Removal of land to the west of Westerleigh and to the south of the railway line around Broad Lane.	Removed as part of the district-wide review of 'white land'.
Addition of land around Folly Brook to the north of the M4.	To enhance the connectivity of Folly Brook.
Addition of Rosary Site of Nature Conservation Importance at Lyde Green.	To reinforce the importance of the SNCI in an area experiencing considerable growth.
Removal of land to the east of Holbrook Common.	Removed as part of the district-wide review of 'white land'.
Removal of land to the east of Codrington and to the south of The Players Golf Club.	Removed as part of the district-wide review of 'white land'.

## Appendix C Boundary rationalisation decision-making

Removal of the eastern edge of Corridor D between Frome Bridge / A432 in the south and Oakfield Farm / Stevens Farm in the north. Bring eastern boundary of Corridor D back to edges of Sodbury Common at Little Sodbury End and Harwoodgate Farm.	Removed as part of the district-wide review of 'white land'.
Removal of land between Chipping Sodbury and Old Sodbury, around Fattening House Farm and Millstone Farm to the south of the South Wales Main Line.	Removed as part of the district-wide review of 'white land'.

### Corridor E

Change	Reason
Addition of St Catherine's Valley.	Added to reflect the importance of the area for both the woodland and grassland strategic network, as well as the landscape value of the valley, as identified within the Bathscape Project.
Removal of land to the east of Wick around Horsepool Farm, Limebrook Farm and Perry's Farm.	Removed as part of the district-wide review of 'white land'.
Removal of land to the south-west of Dyrham and north-east of Doynton.	Removed as part of the district-wide review of 'white land'.

### Corridor F

Change	Reason
Removal of properties in Hanham and Conham, including at Common Road, Gays Road, Memorial Road, Henderson Road, Hawkesbury Drive and Lime Road.	Removed as part of the district-wide urban edge interface review.

## Corridor G

Change	Reason
Removal of land to the north-east of Latteridge.	Removed as part of the district-wide review of 'white land'.
Removal of land to the north of Lark's Farm.	Removed as part of the district-wide review of 'white land'.
Removal of land to the south of Stidcot.	Removed as part of the district-wide review of 'white land'.
Removal of field to the north-east of Ashworthy Farm.	Removed as part of the district-wide review of 'white land'.
Removal of land to the south of Endland's Farm.	Removed as part of the district-wide review of 'white land'.

## Corridor H

Change	Reason
Removal of land to the north-east of Pucklechurch around St Aldam's Well.	Removed as part of the district-wide review of 'white land'.
Removal of part of the Feltham Brook corridor, including land between Gatherham Farm at Ham Lane in the south, and Redford Lane in the north.	Removed as part of the district-wide review of 'white land'.
Removal of land around Bottom's Farm and Wilke's Farm.	Removed as part of the district-wide review of 'white land'.
Addition of land around Home Farm and at Rookery Lane.	To reinforce the connectivity of the corridor between the River Boyd and Feltham Brook.
Removal of properties at Naishcombe Hill in Wick.	Removed as part of the district-wide urban edge interface review.
Removal of properties at High Street / A420 in Wick.	Removed as part of the district-wide urban edge interface review.
Removal of land at Golden Valley / Bitton Mill, Bitton.	Completed development site. Area of the site preserved for woodland



## Appendix C Boundary rationalisation decision-making

	adjacent to the River Frome has been retained in Corridor H.
--	--

### Corridor I

Change	Reason
Removal of land to the west of the M5.	Removed as part of the district-wide review of 'white land'. Severance by the M5 means connectivity of the corridor is lost.

## Appendix D

# Background to GI assets

**D.1** To provide background to the assets included within this project, below is the list of GI assets included within the Core Strategy Appendix 3 (Table D.1) followed by the GI SPD asset list (Table D.2).

**Table D.1: Core Strategy Appendix 3 GI asset list**

Local/Site Scale	Neighbourhood Scale	District Scale	Regional & Sub-Regional Scale
Private gardens	Allotments and orchards	Local Nature Reserves (LNRs)	Internationally & nationally designated sites (e.g. Cotswolds AONB / CNL, SPA/SAC – The Severn Estuary, SSSIs
Green roofs and walls	Footpath and cycleway network	River corridors & their floodplains (Boyd and Ladden Brook)	South West Nature Map ('West of England Nature Recovery Network mapping')
SuDS (Sustainable Drainage Systems)	Parks, play areas, playing fields, village greens and amenity green spaces	Locally Designated sites, SNCIs and RIGS	National Trail (Cotswold Way) and long-distance footpaths (The Dramway, Community Forest Path, Frome Valley Walkway, Jubilee Way, Rive Avon Trail, Monarch's
Watercourses and ponds	Sites of archaeology and cultural heritage	Larger parks and amenity greenspace	
Hedgerows	Woodlands and nature reserves	Strategic Footpath and cycleway network	
Footpath and cycleway network	Cemeteries and Churchyards	Historic Parks and Gardens	
Landscape features and screens	Watercourses, floodplains, ponds, rhines and flood attenuation areas	Visually important landscapes and features (such as	
Trees			
Amenity greenspace			
Childrens' and Young			
Peoples' play space			

## Appendix D Background to GI assets

Local/Site Scale	Neighbourhood Scale	District Scale	Regional & Sub-Regional Scale
	Countryside under agri-environmental stewardship	hillsides and ridgelines), Historic landscapes Open access land The commons Nature Reserves (Lower Wood Nature Reserve) Ancient Woodland Landscape Character Areas	Way, Severn Way & Thornbury Link) National Cycle Network & Avon Cycleway (including the Bristol & Bath Railway Path) Major River Corridors/ Estuary (Avon, Frome and Severn Estuary) & their floodplains

**Table D.2: GI SPD asset list**

Larger scale or rural elements	Smaller scale and urban elements
Parks Communal gardens Woodland Sustainable drainage features such as ponds, swales and reed beds Streams Canals Marshland Scrub Species rich grassland Orchards and food growing opportunities Hedgerow network Green active travel routes	Green roofs Private gardens Green walls Street trees Rain gardens Hedges Permeable paving Wildflower verges Habitat enhancements such as nest boxes Allotments and food growing opportunities Natural play Footpath and cycle ways

## References

- 1 Department for Levelling Up, Housing & Communities (2021). National Planning Policy Framework. Available at: <https://www.gov.uk/government/publications/national-planning-policy-framework--2>
- 2 South Gloucestershire Council (2013). South Gloucestershire Local Plan: Core Strategy. Available at: <https://beta.southglos.gov.uk/wp-content/uploads/South-Gloucestershire-Core-Strategy-2006-2027.pdf>
- 3 South Gloucestershire Council (2017). South Gloucestershire Local Plan: Policies, Sites and Places Plan. Available at: <https://beta.southglos.gov.uk/static/326a821580d49330ee788f663103b1b8/PSP-Plan-Nov2017.pdf>
- 4 Cotswold National Landscape Board (2022). Cotswolds National Landscape Management Plan 2023-2025. Available at: <https://www.chippingcampden-tc.gov.uk/uploads/2023-25-cnll-management-plan-consultation-draft-20-10-22.docx?v=1667237749>
- 5 Department for Levelling Up, Housing & Communities (2019). Natural Environment Guidance. Available at: <https://www.gov.uk/guidance/natural-environment#green-infrastructure>
- 6 South Gloucestershire Council (2022). South Gloucestershire New Local Plan. Available at: <https://beta.southglos.gov.uk/new-local-plan/>
- 7 South Gloucestershire Council (2021). Green Infrastructure: Guidance for new development. Available at: <https://beta.southglos.gov.uk/wp-content/uploads/2602-Green-Infrastructure-SPD.pdf>
- 8 South Gloucestershire Council (no date). Greener Places: Green Infrastructure Strategy. Available at: <https://beta.southglos.gov.uk/green-infrastructure-strategy>
- 9 South Gloucestershire Council (2022). Council Plan 2020-2024. Available at: <https://beta.southglos.gov.uk/publications/council-plan-2020-2024/council-plan-2020-2024/>

## References

---

- 10** West of England Combined Authority (2020). West of England Joint Green Infrastructure Strategy 2020-2030. Available at: <https://www.westofengland-ca.gov.uk/wp-content/uploads/2020/07/Joint-Green-Infrastructure-Strategy-%E2%80%93-June-2020..pdf>
- 11** South Gloucestershire Council (2021). Green Infrastructure: Guidance for new development. Available at: <https://beta.southglos.gov.uk/wp-content/uploads/2602-Green-Infrastructure-SPD.pdf>
- 12** Natural England (2023). Green Infrastructure Framework. Available at: <https://designatedsites.naturalengland.org.uk/GreenInfrastructure/Home.aspx>
- 13** Defra (2010). Making Space for Nature: A review of England's Wildlife Sites and Ecological Network. Available at: [https://webarchive.nationalarchives.gov.uk/ukgwa/20130402170324mp\\_/http://archive.defra.gov.uk/environment/biodiversity/documents/201009space-for-nature.pdf](https://webarchive.nationalarchives.gov.uk/ukgwa/20130402170324mp_/http://archive.defra.gov.uk/environment/biodiversity/documents/201009space-for-nature.pdf)
- 14** Defra (2018). A Green Future: Our 25 Year Plan to Improve the Environment. Available at: [https://assets.publishing.service.gov.uk/government/uploads/system/uploads/attachment\\_data/file/693158/25-year-environment-plan.pdf](https://assets.publishing.service.gov.uk/government/uploads/system/uploads/attachment_data/file/693158/25-year-environment-plan.pdf)
- 15** Defra (2023). Environmental Improvement Plan 2023: Executive Summary. Available at: <https://www.gov.uk/government/publications/environmental-improvement-plan/environmental-improvement-plan-2023-executive-summary>
- 16** HM Government (2023). The Environment (Local Nature Recovery Strategies) (Procedures) Regulations 2023. Available at: <https://www.legislation.gov.uk/ukxi/2023/341/made>
- 17** Defra (2023). Local nature recovery strategy statutory guidance. Available at: [https://assets.publishing.service.gov.uk/government/uploads/system/uploads/attachment\\_data/file/1146160/Local\\_nature\\_recovery\\_strategy\\_statutory\\_guidance.pdf](https://assets.publishing.service.gov.uk/government/uploads/system/uploads/attachment_data/file/1146160/Local_nature_recovery_strategy_statutory_guidance.pdf)

## References

---

- 18** West of England Nature Partnership (2023). West of England Nature Recovery Prospectus. Available at: <https://www.wenp.org.uk/nature-recovery-network-prospectus/>
- 19** West of England Combined Authority (2020). West of England Joint Green Infrastructure Strategy 2020-2030. Available at: <https://www.westofengland-ca.gov.uk/wp-content/uploads/2020/07/Joint-Green-Infrastructure-Strategy-%E2%80%93-June-2020..pdf>
- 20** Bath & North East Somerset (2013). Valuing people, place and nature. Available at: [https://www.bathnes.gov.uk/sites/default/files/gi\\_strategy\\_final\\_web\\_interactive\\_version.pdf](https://www.bathnes.gov.uk/sites/default/files/gi_strategy_final_web_interactive_version.pdf)
- 21** South Gloucestershire Council (2021.) Level 1 Strategic Flood Risk Assessment. Available at: [https://beta.southglos.gov.uk/static/777cfdc6b8907d8ab9e1e4f97e59474e/Main-Report-Level\\_1\\_SFRA-2021-1.pdf](https://beta.southglos.gov.uk/static/777cfdc6b8907d8ab9e1e4f97e59474e/Main-Report-Level_1_SFRA-2021-1.pdf)
- 22** LUC (2023). South Gloucestershire Landscape Character Assessment. Supplementary Planning Document. (Not yet published online)
- 23** Landscape Institute & IEMA (2013). Guidelines for Landscape and Visual Impact Assessment. Available at: <https://www.routledge.com/Guidelines-for-Landscape-and-Visual-Impact-Assessment/Landscape-Institute-IEMA/p/book/9780415680042>
- 24** Environment Agency (no date). Resilient Frome. Available at: <https://engageenvironmentagency.uk.engagementhq.com/bri001-frome>

Report produced by LUC

# Report produced by LUC

## **Bristol**

12th Floor, Beacon Tower, Colston Street, Bristol BS1 4XE  
0117 929 1997  
bristol@landuse.co.uk

## **Edinburgh**

Atholl Exchange, 6 Canning Street, Edinburgh EH3 8EG  
0131 202 1616  
edinburgh@landuse.co.uk

## **Glasgow**

37 Otago Street, Glasgow G12 8JJ  
0141 334 9595  
glasgow@landuse.co.uk

## **London**

250 Waterloo Road, London SE1 8RD  
020 7383 5784  
london@landuse.co.uk

## **Manchester**

6th Floor, 55 King Street, Manchester M2 4LQ  
0161 537 5960  
manchester@landuse.co.uk

**landuse.co.uk**

Landscape Design / Strategic Planning & Assessment  
Development Planning / Urban Design & Masterplanning  
Environmental Impact Assessment / Landscape Planning & Assessment  
Landscape Management / Ecology / Historic Environment / GIS & Visualisation