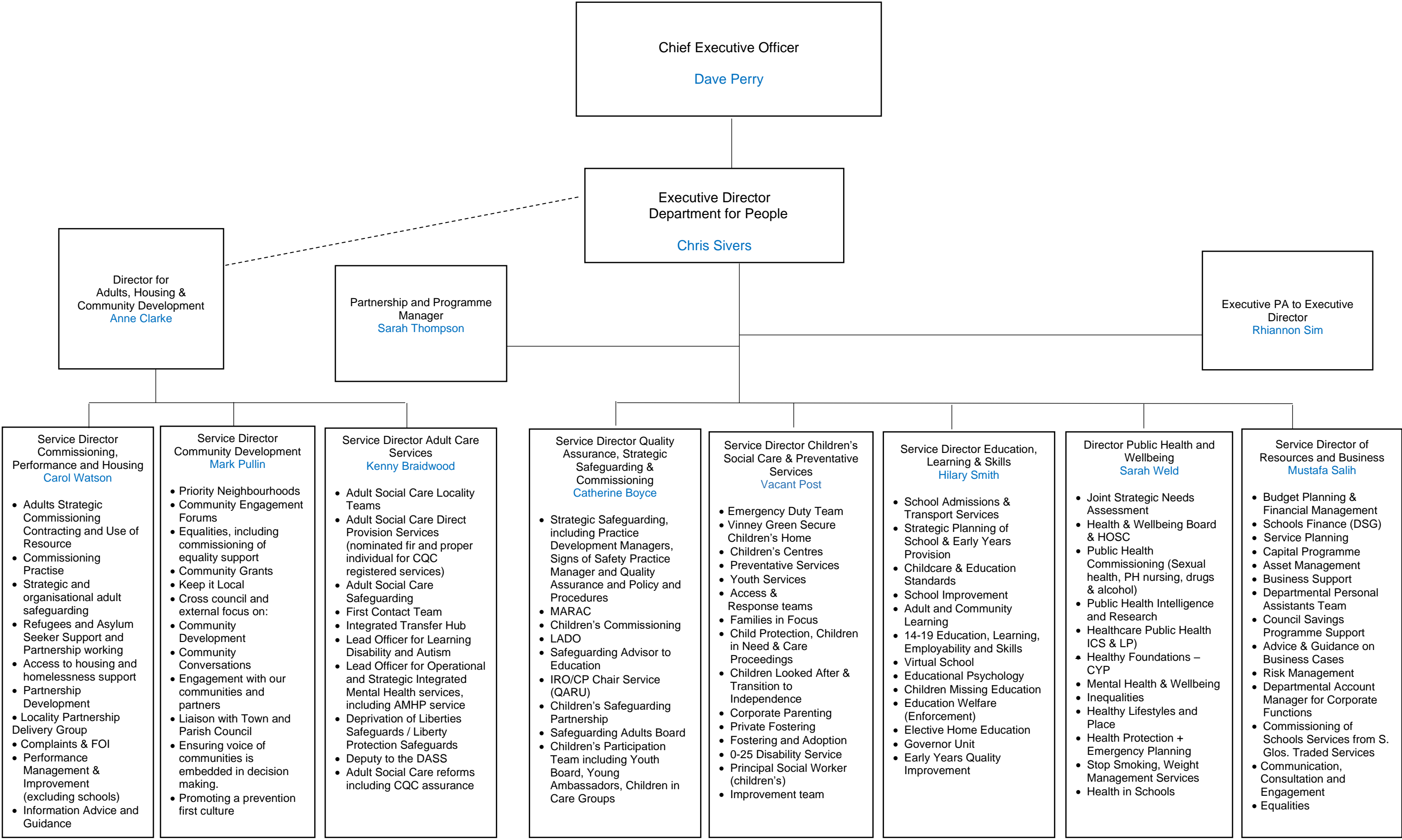


# Department for People Senior Management Team



Chief Executive Officer  
**Dave Perry**

Executive Director  
Department for People  
**Chris Sivers**

Director for  
Adults, Housing &  
Community Development  
**Anne Clarke**

Partnership and Programme  
Manager  
**Sarah Thompson**

Executive PA to Executive  
Director  
**Rhianon Sim**

**Service Director  
Commissioning,  
Performance and Housing  
Carol Watson**

- Adults Strategic Commissioning Contracting and Use of Resource
- Commissioning Practise
- Strategic and organisational adult safeguarding
- Refugees and Asylum Seeker Support and Partnership working
- Access to housing and homelessness support
- Partnership Development
- Locality Partnership Delivery Group
- Complaints & FOI
- Performance Management & Improvement (excluding schools)
- Information Advice and Guidance

**Service Director  
Community Development  
Mark Pullin**

- Priority Neighbourhoods
- Community Engagement Forums
- Equalities, including commissioning of equality support
- Community Grants
- Keep it Local
- Cross council and external focus on:
- Community Development
- Community Conversations
- Engagement with our communities and partners
- Liaison with Town and Parish Council
- Ensuring voice of communities is embedded in decision making.
- Promoting a prevention first culture

**Service Director Adult Care  
Services  
Kenny Braidwood**

- Adult Social Care Locality Teams
- Adult Social Care Direct Provision Services (nominated firm and proper individual for CQC registered services)
- Adult Social Care Safeguarding
- First Contact Team
- Integrated Transfer Hub
- Lead Officer for Learning Disability and Autism
- Lead Officer for Operational and Strategic Integrated Mental Health services, including AMHP service
- Deprivation of Liberties Safeguards / Liberty Protection Safeguards
- Deputy to the DASS
- Adult Social Care reforms including CQC assurance

**Service Director Quality Assurance, Strategic Safeguarding & Commissioning  
Catherine Boyce**

- Strategic Safeguarding, including Practice Development Managers, Signs of Safety Practice Manager and Quality Assurance and Policy and Procedures
- MARAC
- Children's Commissioning
- LADO
- Safeguarding Advisor to Education
- IRO/CP Chair Service (QARU)
- Children's Safeguarding Partnership
- Safeguarding Adults Board
- Children's Participation Team including Youth Board, Young Ambassadors, Children in Care Groups

**Service Director Children's Social Care & Preventative Services  
Vacant Post**

- Emergency Duty Team
- Vinney Green Secure Children's Home
- Children's Centres
- Preventative Services
- Youth Services
- Access & Response teams
- Families in Focus
- Child Protection, Children in Need & Care Proceedings
- Children Looked After & Transition to Independence
- Corporate Parenting
- Fostering and Adoption
- 0-25 Disability Service
- Principal Social Worker (children's)
- Improvement team

**Service Director Education, Learning & Skills  
Hilary Smith**

- School Admissions & Transport Services
- Strategic Planning of School & Early Years Provision
- Childcare & Education Standards
- School Improvement
- Adult and Community Learning
- 14-19 Education, Learning, Employability and Skills
- Virtual School
- Educational Psychology
- Children Missing Education
- Education Welfare (Enforcement)
- Elective Home Education
- Governor Unit
- Early Years Quality Improvement

**Director Public Health and Wellbeing  
Sarah Weld**

- Joint Strategic Needs Assessment
- Health & Wellbeing Board & HOSC
- Public Health Commissioning (Sexual health, PH nursing, drugs & alcohol)
- Public Health Intelligence and Research
- Healthcare Public Health ICS & LP)
- Healthy Foundations – CYP
- Mental Health & Wellbeing
- Inequalities
- Healthy Lifestyles and Place
- Health Protection + Emergency Planning
- Stop Smoking, Weight Management Services
- Health in Schools

**Service Director of Resources and Business  
Mustafa Salih**

- Budget Planning & Financial Management
- Schools Finance (DSG)
- Service Planning
- Capital Programme
- Asset Management
- Business Support
- Departmental Personal Assistants Team
- Council Savings Programme Support
- Advice & Guidance on Business Cases
- Risk Management
- Departmental Account Manager for Corporate Functions
- Commissioning of Schools Services from S. Glos. Traded Services
- Communication, Consultation and Engagement
- Equalities