

South Glos SACRE RE newsletter



May 2026

For RE support, contact Ed Pawson at efpawson@gmail.com.

Church schools contact: Laura Harris

Laura.Harris@bristoldiocese.org or

Julia Watts

julia.watts@bristoldiocese.org



Combatting anti-religious hate

With antisemitism and anti-Muslim hostility on the rise, the need for good RE is even more apparent.

[Jewish Culture Month](#) starts on 16th May, celebrating Jewish community and creativity. It's good to read about charities like [Nisa-Nashim](#) which brings Jewish and Muslim women together through social events.

The Quakers have recently published a useful guide to [Antisemitism](#) and schools also need to be aware that the [official guidance](#) is now to avoid using the term **Islamophobia**, in favour of referring to [Anti-Muslim Hostility](#).

Oak resources for RE – free CPD

We have carried out a mapping exercise to show where the new, fantastic and free [Oak Academy resources](#) can be used to teach the South Glos RE Today Syllabus (primary sections). **Please join us to get an introduction to this exciting new set of resources.** Sign up [here](#). See P3.

Ways of Knowing in RE

RE:ONLINE and NATRE: Focus Week—exploring [Ways of Knowing: Diving into Different Disciplines](#) from 18th – 24th May.

RE in the NC

Update: national conversations are ongoing for the possibility of RE becoming an NC subject. We await a decision being made by the DfE in the coming months. [See NATRE news](#).

SACRE members needed

Are you interested in finding out about joining a SACRE? We are looking for new teacher reps in South Glos. SACRE meets three times a year to support and monitor RE and CW in local schools. Get in [contact](#) if you'd like to know more.

Learn Teach Lead RE



LTLRE hub (twilight) meetings are **free and open to all teachers of RE**, primary and secondary, wherever you are based. See LTLRE [website](#) for full details.

Oak resources for RE in South Glos Thurs 18th June

Prayer and Reflection

This [BBC page](#) hosts an invitation to sacred spaces across all four nations, from six of the UK's major faiths, during personal moments of spiritual and religious connection.

Secondary RE leaders' toolkit

NATRE have launched their Secondary Subject Leader [Toolkit](#) — a comprehensive collection of resources designed to support secondary school subject leaders in developing and enhancing the teaching and leadership of RE.

Primary RE leaders' toolkit

NATRE Primary Subject Leader [toolkit](#) is the ultimate resource for primary school subject leaders seeking to enhance their Religious Education teaching.

NATRE Primary Survey 2026

Take part in the NATRE [Primary Survey](#) here. This is your chance to make sure the reality of RE in your primary classroom is heard where it counts.

RE Hubs

Visit the [RE Hubs](#) website for all your RE needs: accredited [School Speakers](#), [Places of Worship](#), [Advertise RE Jobs](#), [Resources](#), [Calendar of CPD Events](#), [Local Groups](#), [School Speakers](#)

Secularism

Humanists UK have released an [animation](#) and some useful [resources](#) on secularism. Secularism does not mean the same as atheism. It is a political position on how we should organise society given a plurality of worldviews.

Why I'm an atheist

Former Love Island star, Shakira Khan, shares [why she became an Atheist](#)... and the question that made her rethink her beliefs.

Ethiopian Bible tradition

The [Ethiopian biblical tradition](#) stands out as one of the oldest in the Christian world, rooted in a church that embraced Christianity in the 4th century. [The Ethiopian Bible](#) has 88 books, rather than the traditional 66. It's not just a religious artifact, but a cultural and historical treasure. It reflects Africa's deep role in shaping early Christianity and preserves voices, stories and teachings that broaden our understanding of the biblical world. Its survival is a reminder that the history of Christianity is far more global, diverse, and ancient than many people realize.

Islam: Sunni and Shi'a

This short TrueTube film explores the key similarities and differences between the [Shia and Sunni](#) branches of Islam.

Pilgrimage

This recent series on the BBC's [Pilgrimage](#) is full of interest for RE lessons. In [Episode 2](#) (at 22:22 minutes) the conversation between Ash Blaker and the two Jewish women guides about their Reform Synagogue is fascinating. Interestingly, as a lapsed Jew from the Orthodox tradition, Ash struggles to find much in common with Progressive Jewish practice.

Are you an RE teacher with questions about Judaism?

A chance to ask anything you like...
Open to primary and secondary teachers who teach Judaism

Why don't all...
What's the difference between...
I don't understand which...



Mon 11th May 2026, 3.45-4.45pm

Any question answered



BOARD OF DEPUTIES OF
BRITISH JEWS
ADVOCACY | DEMOCRACY | COMMUNITY

by Anna Silver,
Education Officer

Monthly informal drop in session

(for monthly dates and zoom links email anna.silver@bod.org.uk)

For Zoom link see attached text

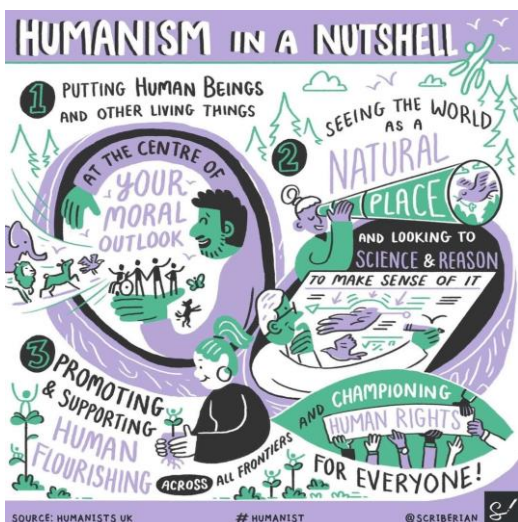
Judaism: Any Questions

Monday 11th May, 3.45-4.45pm

[Zoom link](#)

Meeting ID: 843 7913 4655

Passcode: 278417



South Glos LTLRE Hub Meeting

Twilight network meeting for all primary teachers of RE

Thursday 18th June 2026 (online)

Oak resources for RE

We have carried out a mapping exercise to show where the new, fantastic and free [Oak Academy resources](#) can be used to teach the primary sections of the South Glos RE Today Syllabus

Please join us for an introduction to this exciting new set of resources

Presented by Adam Roberstson (Oak Academy lead for RE)

Join Zoom Meeting: <https://us02web.zoom.us/j/88990936589>

For more information contact Ed Pawson efpawson@gmail.com

**Free and open to all teachers and HLTAs teaching RE at Primary and Secondary.
Everyone is very welcome.**

Primary hub leader – Tracy at tracy.moorhouse@mangoschool.uk

Secondary hub leaders – Caroline Smith caroline.smith@cset.co.uk and Leanne Murley
Leanne.murley@cset.co.uk

Hubs are affiliated to the National Association of Teachers of RE www.natre.org.uk/

Jewish Culture Month
16th May - 16th June
2026



WHAT IS JEWISH CULTURE MONTH?



Jewish Culture Month (JCM) launches this May! (16th May -16th June 2026)

A month-long celebration of Jewish heritage, creativity and culture offering a valuable opportunity for Religious Education (RE) teachers, in both primary and secondary schools, to deepen pupils' understanding of Judaism as a lived, diverse and dynamic tradition.

JCM invites schools to engage meaningfully with Jewish life, culture and identity, enriching curricula while fostering respect, curiosity and community cohesion. The festival, which takes place during the Jewish month of Sivan, highlights themes of learning, heritage and celebration. For RE teachers, this aligns closely with curriculum aims exploring religions as lived experiences, developing religious literacy and encouraging pupils to reflect on diversity within and across traditions.

There will be activities taking place across the UK, in community spaces, cultural centres and other sites and spaces.





FURTHER INFORMATION

Visit www.jewishculturemonth.org.uk for...

- Jewish Culture Month resource hub, which provides a wide range of curated materials including videos, podcasts, websites and book recommendations. These resources, which cover both historical context and contemporary Jewish life, can be adapted for different key stages, supporting younger pupils in exploring festivals and traditions while enabling older students to engage with more complex questions about identity and belief.
- Ideas on different activities that can take place within your own school.
- For secondary schools, Jewish Living Online is a free digital resource that enables students to explore Jewish beliefs, practices and culture independently or in class. It is particularly useful for supporting GCSE and A-level study, as well as encouraging independent learning.
- Beyond the classroom, visits to synagogues, museums and heritage centres offer valuable insight into Jewish life in the UK – see the event listings for all the things your school community might enjoy!
- Further information on the Jewish Living Exhibition Experience – and how you can book it for your school!