

Station Road, Yate Co-design

March 2023 update
Summary report



About

Station Road is an important gateway into Yate, as well as being home to a diverse range of businesses and popular community facilities.

Working with the community, we hope to make it safer and easier for people to get about on foot, wheelchair, bicycle, bus and car.

We are committed to working with the local community on developing proposals for Station Road through a co-design process.

[About](#)[Project updates](#)[Feedback](#)[Next steps](#)

Project updates

More than 100 local people attended our community drop-in sessions at Yate Parish Hall on Thursday 23 February 2023.

Topics discussed included:

- Public transport
- Parking
- Public areas
- Junction improvements
- Walking, cycling and wheeling access



Project updates

Lots of people who attended also signed up for the Station Road focus group, who will work with us and other stakeholders over the coming months to develop proposals to make Station Road a better place for all.

Further design updates will take place later in the year including a community-wide consultation.

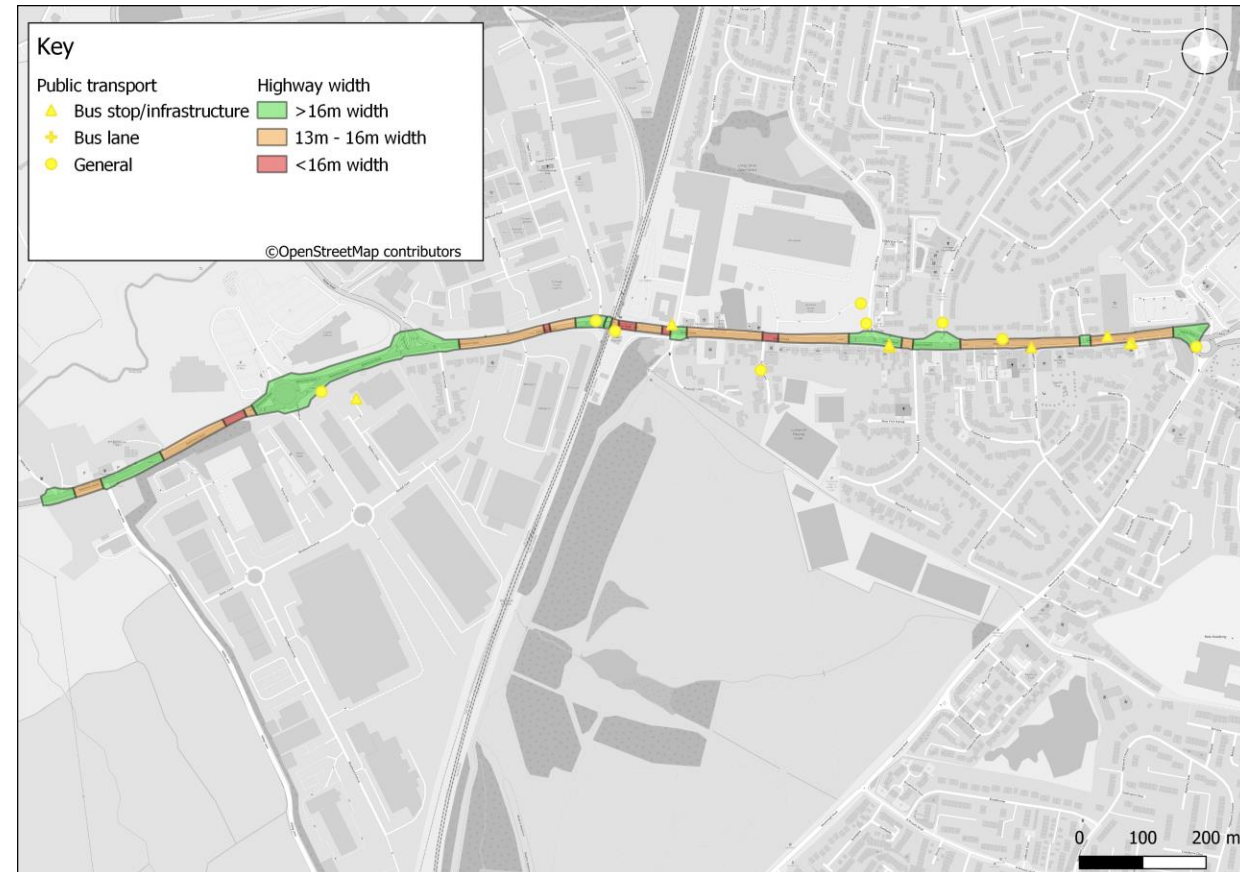


Public transport

Many people spoke about public transport. Comments fell into one of the following themes:

- Bus lanes/priority
- Bus stops/infrastructure
- General comments on public transport

People were encouraged to indicate where their comments are relevant on a map of Station Road.



About

Project
updates

Feedback

Next steps

Public transport

Parking

Public areas

Junction
improvements

Walking, cycling
and wheeling



Public transport

Comments raised include:

- Issues with current bus stops – including impacting on visibility for those entering and exiting from junctions
- Improved bus stops with additional bins and more planting
- A need for bus infrastructure to take account the need of walkers, cyclists and wheelers
- Happiness with the number of bus stops, just not the quality of them
- Bus lanes are considered inappropriate where there is limited road space



About

Project
updates

Feedback

Next steps

Public transport

Parking

Public areas

Junction
improvements

Walking, cycling
and wheeling

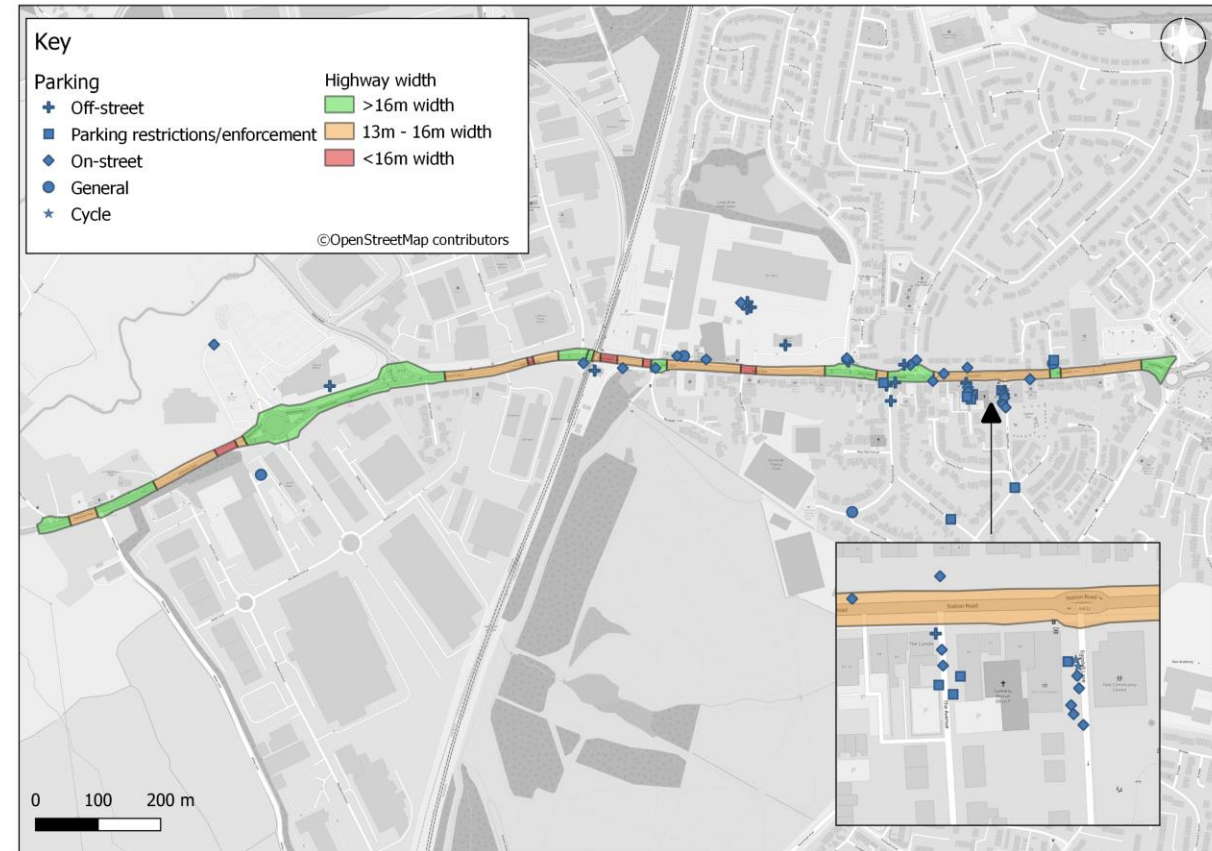


Parking

People were keen to discuss parking.
Comments fell into the following themes:

- Cycle parking
- Off-street parking
- On-street parking
- Restrictions/enforcement
- General comments related to parking

People were encouraged to indicate where their comments are relevant on a map of Station Road.



About

Project
updates

Feedback

Next steps

Public transport

Parking

Public areas

Junction
improvements

Walking, cycling
and wheeling



Parking

Comments raised include:

- More (safe and secure) cycle parking needed
- Cycle parking outside Tesco is an issue for people trying to navigate the space
- More parking needed, including for businesses
- Several locations were highlighted as areas requiring parking restrictions/ enforcement

Location for restrictions/enforcement	Number of comments
The Avenue	3
Mow Barton	1
Maybank Road	1
Moorland Road	1
Tesco Express	1
Rowe Vets	1
Eggshill	1
General (not specified)	2

About

Project
updates

Feedback

Next steps

Public transport

Parking

Public areas

Junction
improvements

Walking, cycling
and wheeling



Parking

On-street parking issues/suggestions were raised by many people, including:

- More needed (particularly at Tesco and for local businesses)
- On-street parking could calm traffic
- Specific locations for on-street parking

Off-street parking was suggested at the following locations:

- Yate Station
- Whirlpool
- Longs Drive
- Moorland Road

Location for on-street parking	Number of comments
Tesco Express	5
Moorland Road	2
The Avenue	3
Parish Hall	1
Westleigh Close	1
Whirlpool	1
Longs Drive/Cranleigh Court Road	1
Not specified	8

About

Project
updates

Feedback

Next steps

Public transport

Parking

Public areas

Junction
improvements

Walking, cycling
and wheeling

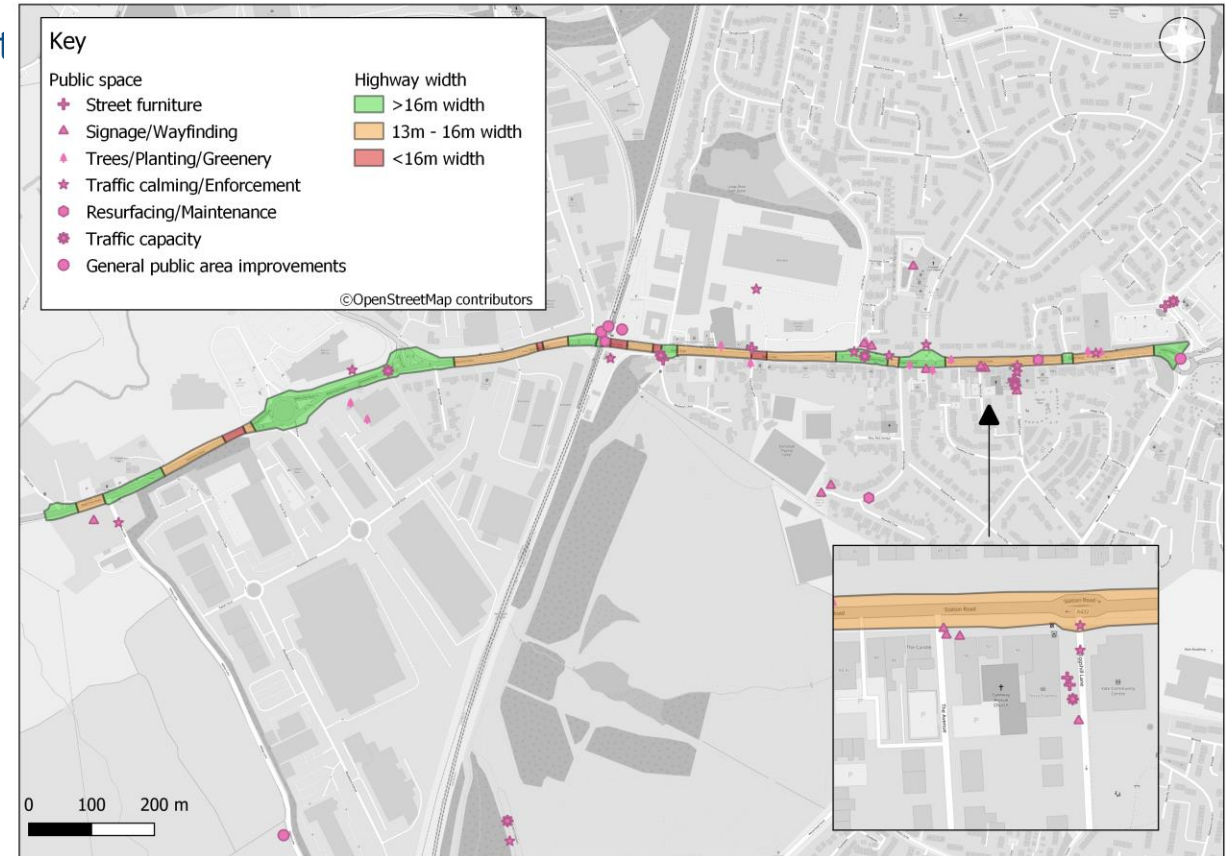


Public areas

People also discussed public areas. Comments fell into one of the following themes:

- Traffic capacity
- Traffic calming/enforcement
- Resurfacing/maintenance
- Trees/planting/greenery
- Street furniture
- Signage/wayfinding
- General public area improvements

People were encouraged to indicate where their comments were relevant on a map of Station Road.



About

Project
updates

Feedback

Next steps

Public transport

Parking

Public areas

Junction
improvements

Walking, cycling
and wheeling



Public areas

It was raised that traffic capacity improvements are needed at locations along Station Road.

Location suggested for traffic capacity improvements	Number of comments
Road to Nowhere	5
Tesco Express	1
Station Road roundabout	1
Longs Drive	2
Park and Ride	1
Rowe Vets	1
Yate South junction	1
Moorland Road	1
Stover Road junction	1
Eggshill Lane	1
General (not specified)	11

Suggestions for traffic calming/enforcement measures were also offered at various locations along Station Road.

Location for traffic calming/enforcement	Number of comments
Eggshill Lane	2
Cranleigh Court Road	1
Whirlpool	1
Nibley Lane – Coalpit Heath	1
Longs Drive	1
Mayshill	1
General (not specified)	27

About

Project
updates

Feedback

Next steps

Public transport

Parking

Public areas

Junction
improvements

Walking, cycling
and wheeling



Public areas

Many people also requested more trees/planting/greenery along Station Road.

Location for trees /planting/greenery	Number of comments
B&Q	2
Cranleigh Court Road Junction	2
The Avenue	1
Stover Road	1
Moorland Road	1
Yate Station	2
General (not specified)	7

Signage was highlighted as something to be improved along Station Road, with several locations specified.

Location for signage/wayfinding	Number of comments
Longs Drive	2
Nibley Lane	1
The Avenue	2
Moordell Close	2
Eggshill Lane	1
Near Cranleigh Court Chapel	1
Yate Station	2
Sunnyside Lane	1
General (not specified)	3

About

Project
updates

Feedback

Next steps

Public transport

Parking

Public areas

Junction
improvements

Walking, cycling
and wheeling

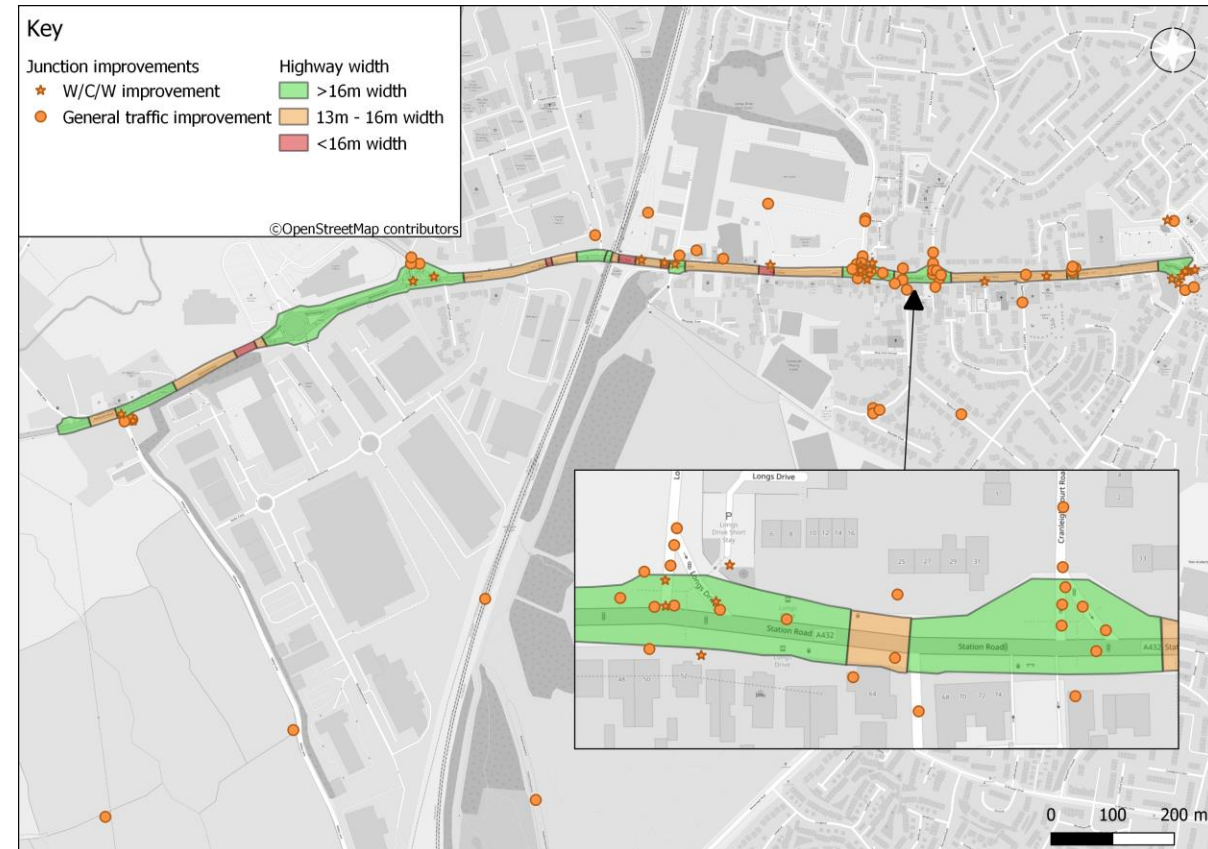


Junction improvements

People also discussed junction improvements. Comments fell into one of the following themes:

- Walking, cycling and wheeling junction improvement
- General traffic junction improvement

People were encouraged to indicate where their comments were relevant on a map of Station Road.



About

Project
updates

Feedback

Next steps

Public transport

Parking

Public areas

Junction
improvements

Walking, cycling
and wheeling



Junction improvements

Many comments were made in relation to walking, cycling and wheeling junction improvements, including:

- Safety concerns at junctions. Improved crossings at junctions are necessary
- Staggered starts for bicycles and cars may help
- Single stage crossings for cyclists could also help at key junctions
- Cyclist and pedestrian crossing priority is needed at side roads

Location for walking/cycling/wheeling junction improvements	Number of comments
Badminton Road	1
Nibley Lane junction	1
Station Road roundabout	4
Mayshill junction	1
Longs Drive junction	2
Station Close	1
Stover Road junction	2
Parish Hall	1
The Avenue	1
Yate Station	2
General (not specified)	10

About

Project
updates

Feedback

Next steps

Public transport

Parking

Public areas

Junction
improvements

Walking, cycling
and wheeling



Junction improvements

Many comments were also made in relation to general junction improvements along Station Road. Key issues raised include:

- Visibility is an issue when getting in and out of accesses and junctions
- Reinstating right turn lanes at some junctions could be required
- Traffic signal improvements are needed at some junctions
- Consolidating the access to Whirlpool could reduce conflict



About

Project
updates

Feedback

Next steps

Public transport

Parking

Public areas

Junction
improvements

Walking, cycling
and wheeling

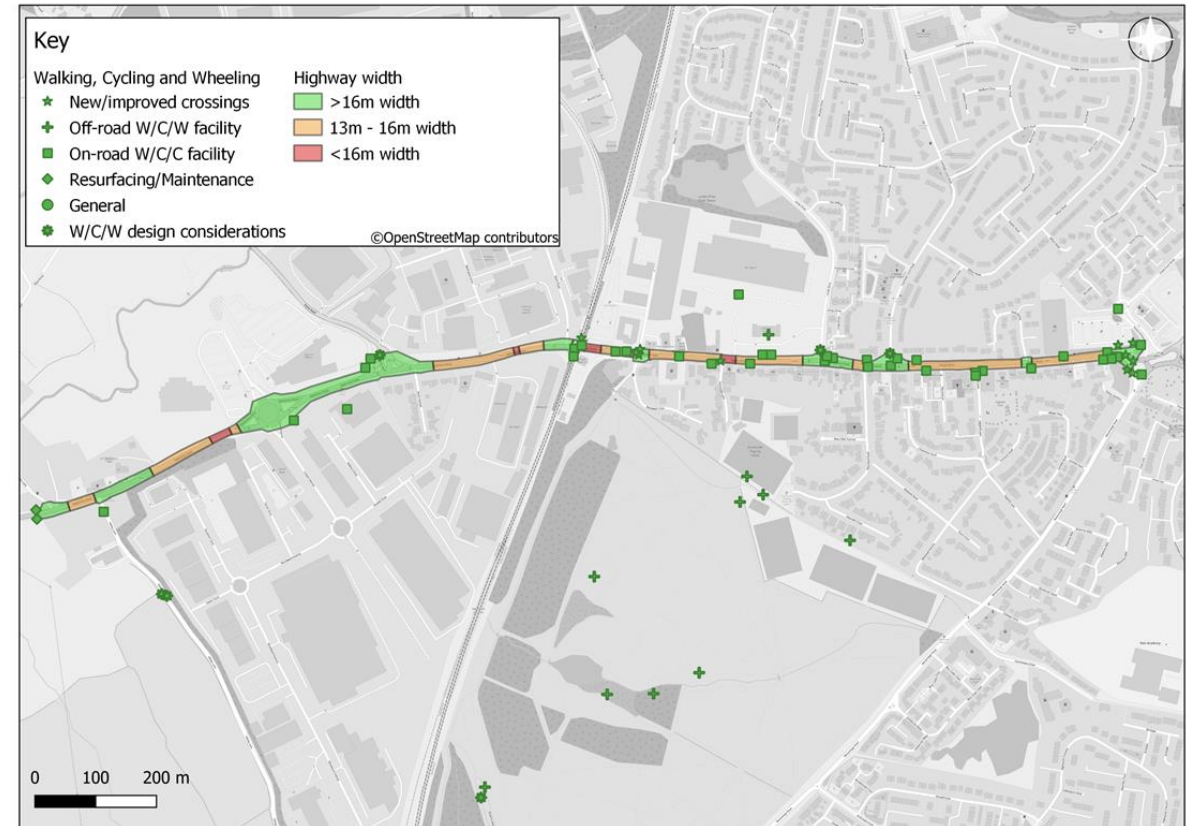


Walking, cycling and wheeling

People also discussed walking, cycling and wheeling improvements. Comments fell into one of the following themes:

- Walking, cycling and wheeling design considerations
- New/improved crossing
- Resurfacing/maintenance
- On-road walking, cycling and wheeling facility
- Off-road walking, cycling and wheeling facility

People were encouraged to indicate where their comments were relevant on a map of Station Road.



About

Project
updates

Feedback

Next steps

Public transport

Parking

Public areas

Junction
improvements

Walking, cycling
and wheeling



Walking, cycling and wheeling

On-street cycling facilities was a prominent point of discussion. Issues covered include:

- Current facilities felt to be inadequate for all users
- Cycling routes need to be direct and continuous – more connected routes needed
- No real preference between two-way cycle tracks and one-way cycle tracks
- Some preferred cycling facilities over parking provision, whilst others felt parking provision was more beneficial.

Some people also mentioned that off-street cycling facilities should be explored, as it may be safer. Others mentioned that this should only be explored if safety can be guaranteed through lighting and improved security.

Locations mentioned concerning on-road cycling facilities	Number of comments
Yate Station/Railway Bridge	4
Station Road roundabout	3
Longs Drive	1
Crainleigh Court Road	2
Eggshill Lane	1
Nibley Lane	1
Stover Road	1
Jacksons Social Club	2
Near the Avenue	1
General (not specified)	33

About

Project
updates

Feedback

Next steps

Public transport

Parking

Public areas

Junction
improvements

Walking, cycling
and wheeling



Walking, cycling and wheeling improvements

Other comments received include:

- Facilities need to be designed to maintain consistent widths and to be direct and continuous
- Cycle lanes need to be more easily seen
- New/upgraded crossing facilities are needed due to high traffic flows
- Surfacing needs improvements, particularly footways



About

Project
updates

Feedback

Next steps

Public transport

Parking

Public areas

Junction
improvements

Walking, cycling
and wheeling



Next steps

Those who signed up for the Station Road focus group will be invited to focus groups sessions during spring and summer 2023.

These sessions will involve the co-design of draft proposals and options before producing draft designs.

We will invite the wider public to share their views and comment on the draft designs in late 2023.

The final designs will form part of the Final Business Case which will be submitted to West of England Combined Authority in 2024.