

D Residual risk mapping

Figure D-1: Failure of outfall – extent	II
Figure D-2: Failure of outfall – depth	III
Figure D-3: Failure of outfall – hazard	IV
Figure D-4: Breach of Oldbury Pill embankment – extent	V
Figure D-5: Breach of Oldbury Pill embankment – depth	VI
Figure D-6: Breach of Oldbury Pill embankment – hazard	VII
Figure D-7: Breach of power station embankment – extent	VIII
Figure D-8: Breach of power station embankment – depth	IX
Figure D-9: Breach of power station embankment – hazard	X

Figure D-1: Failure of outfall – extent

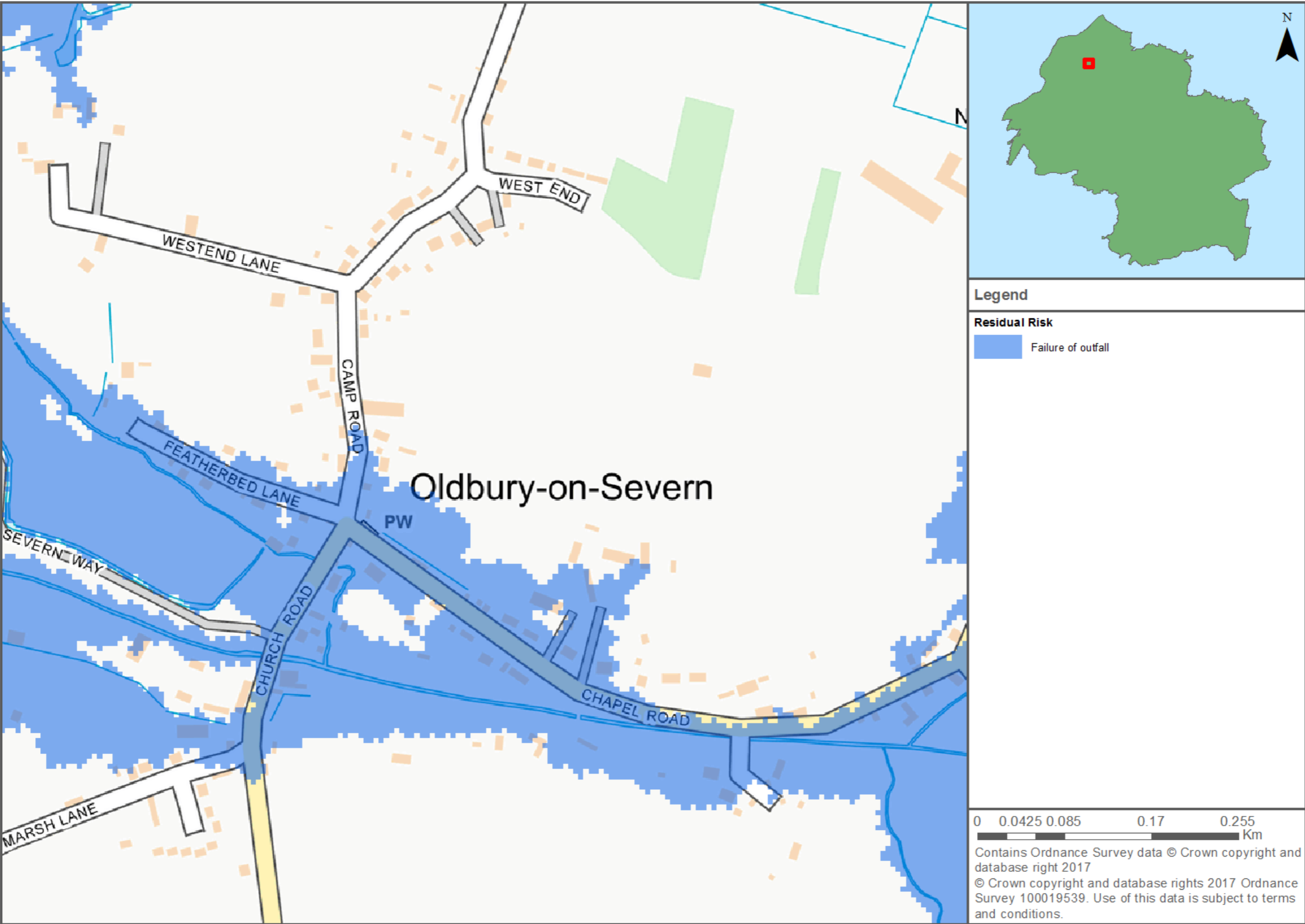


Figure D-2: Failure of outfall – depth

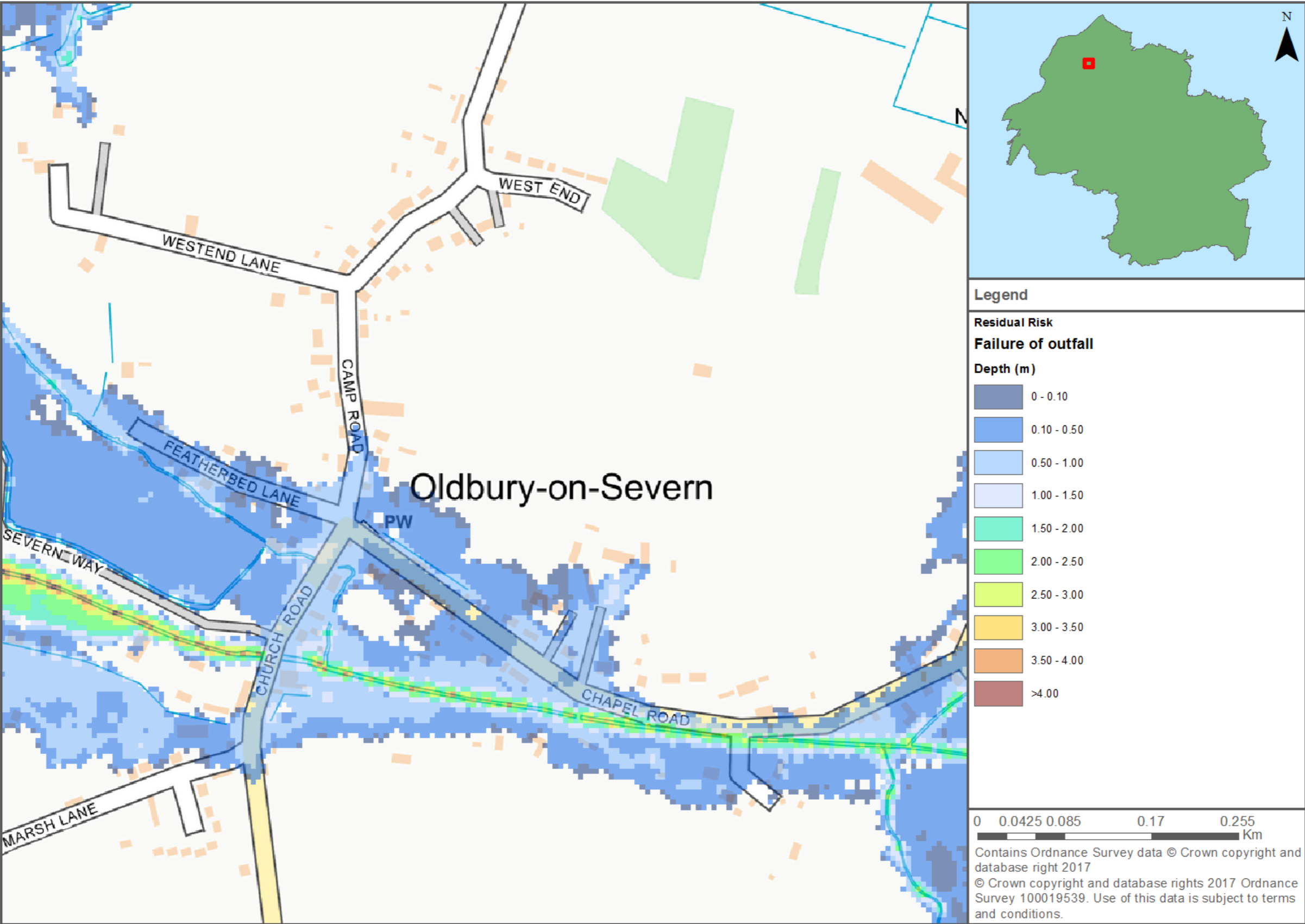


Figure D-3: Failure of outfall – hazard

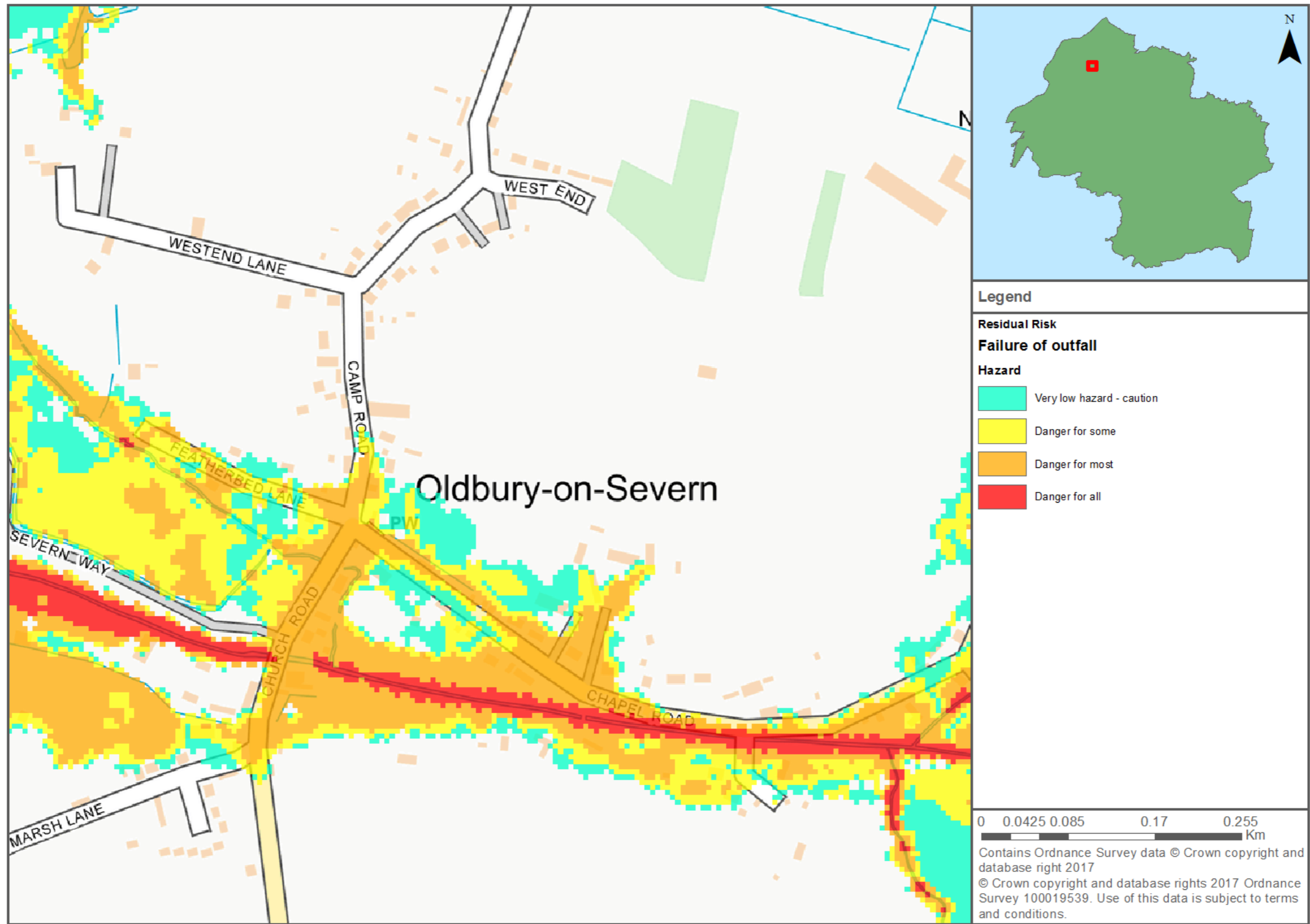


Figure D-4: Breach of Oldbury Pill embankment – extent

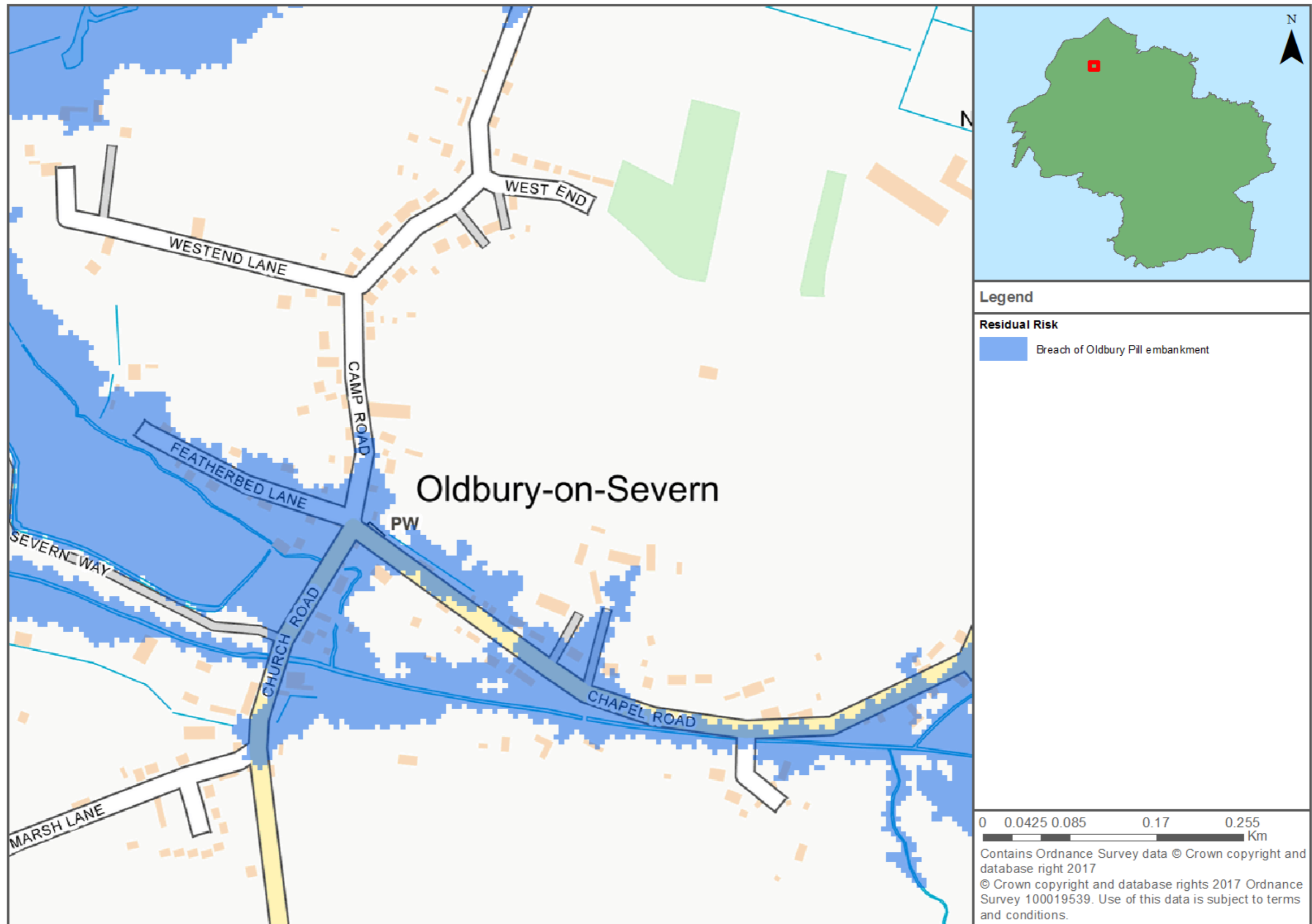


Figure D-5: Breach of Oldbury Pill embankment – depth

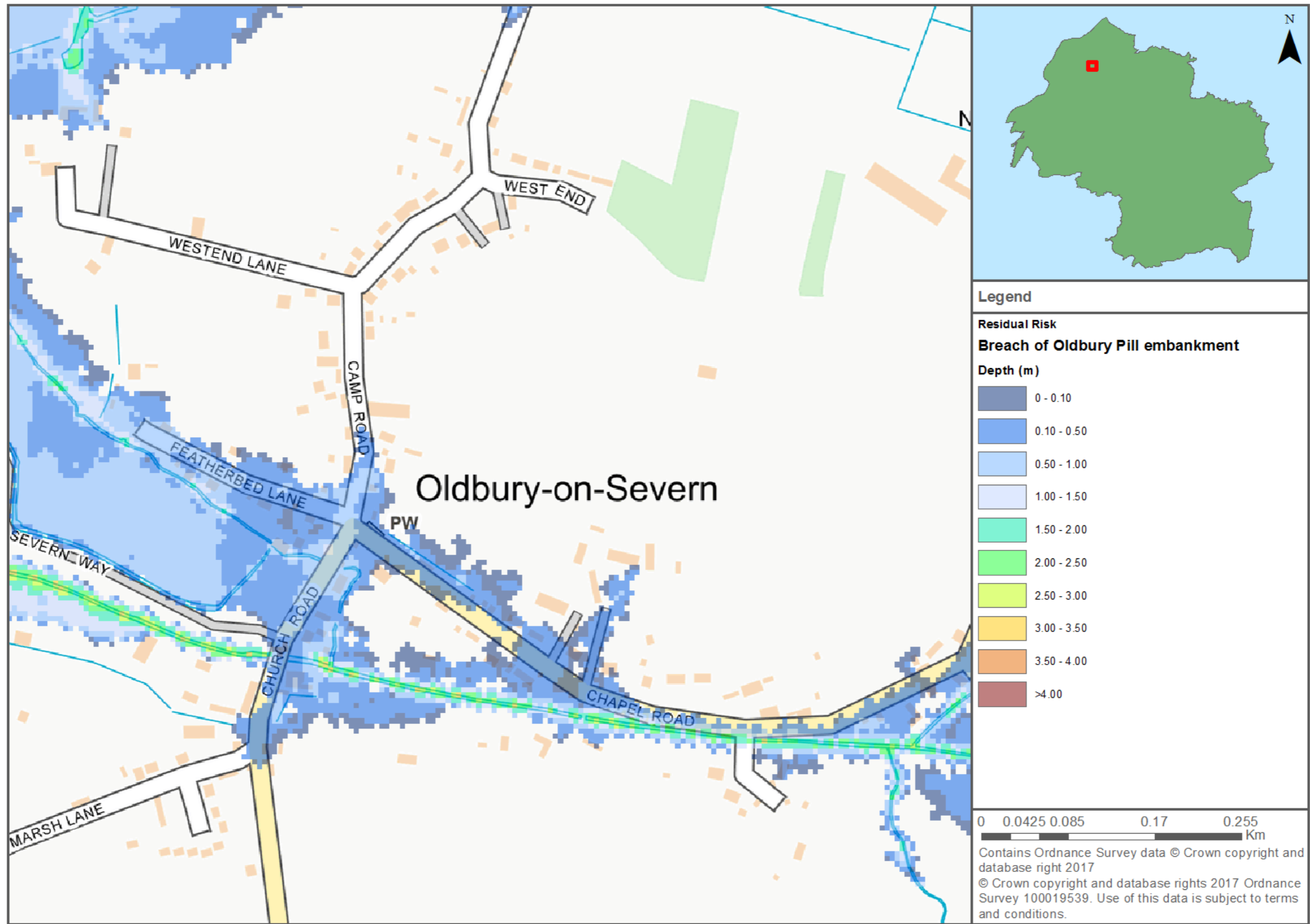


Figure D-6: Breach of Oldbury Pill embankment – hazard

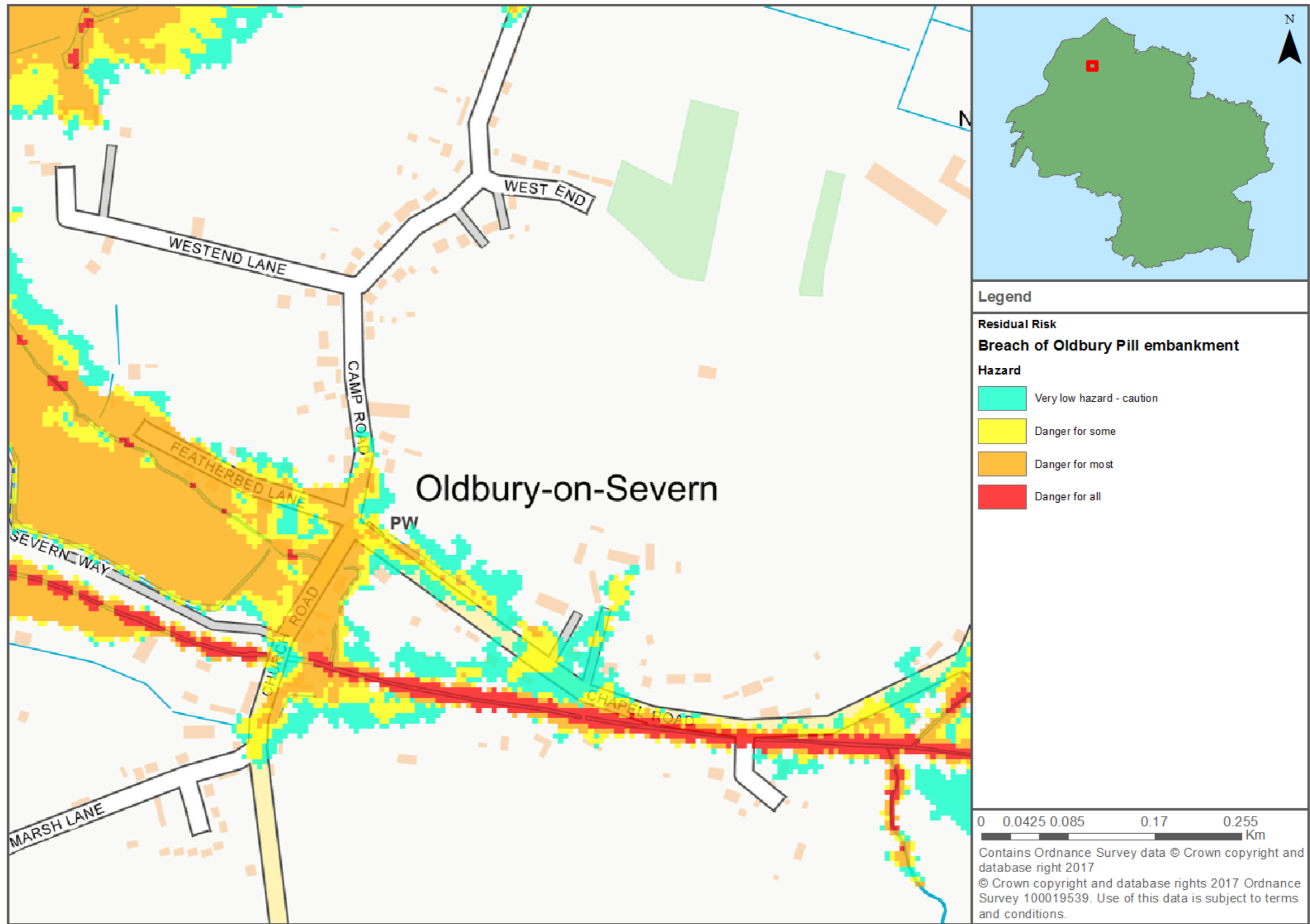


Figure D-7: Breach of power station embankment – extent

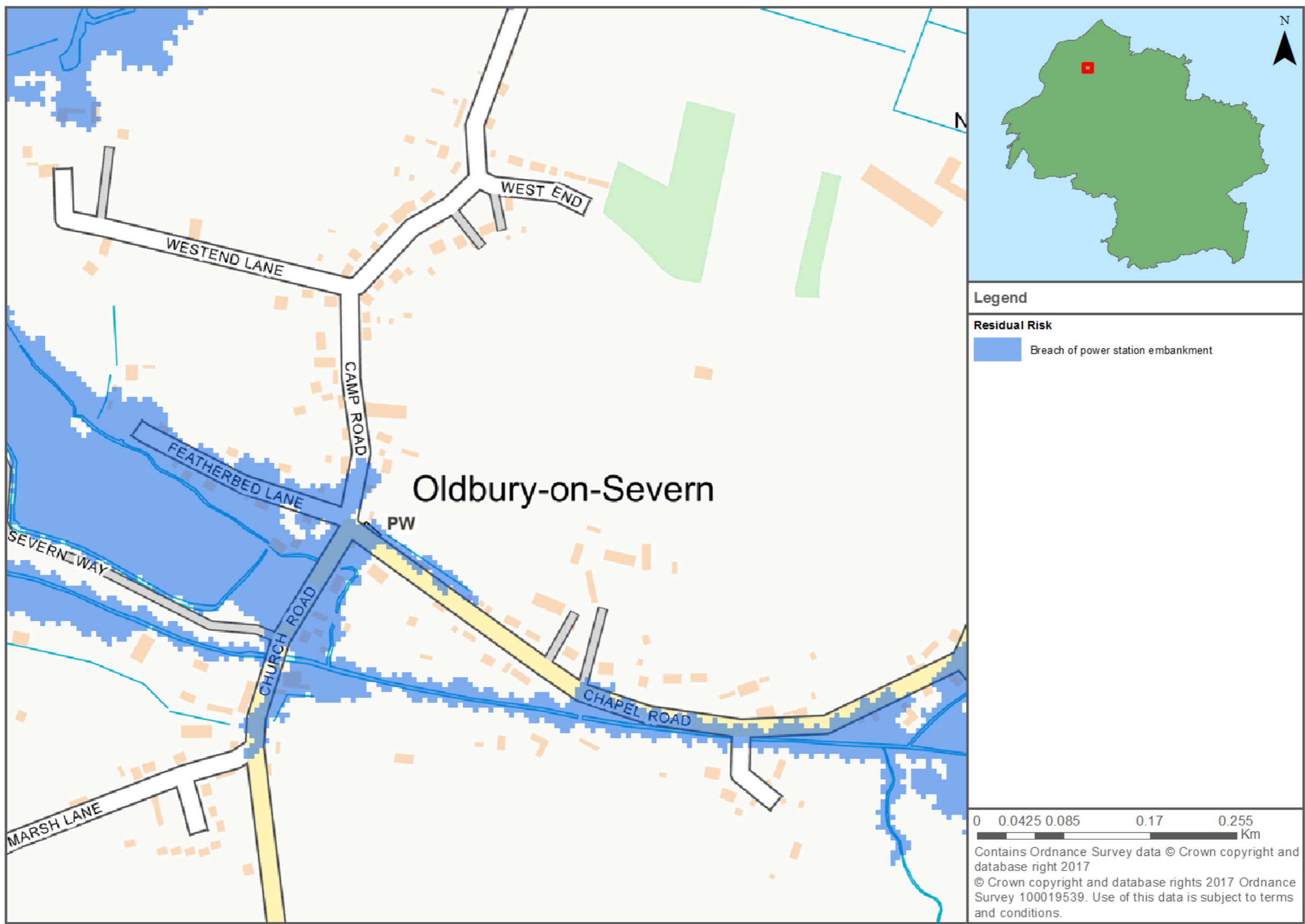


Figure D-8: Breach of power station embankment – depth

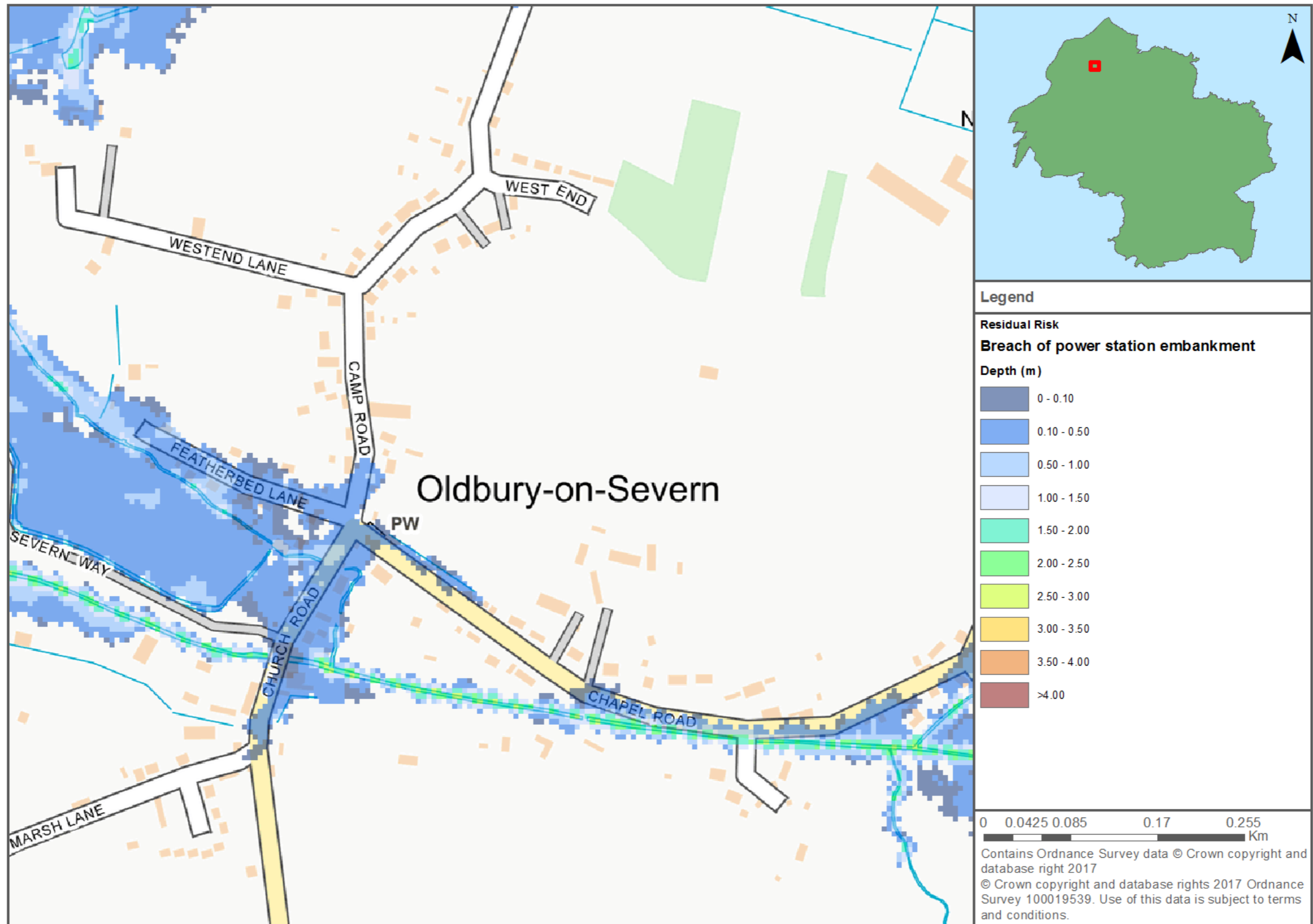


Figure D-9: Breach of power station embankment – hazard

