

Neighbourhood Planning Notice



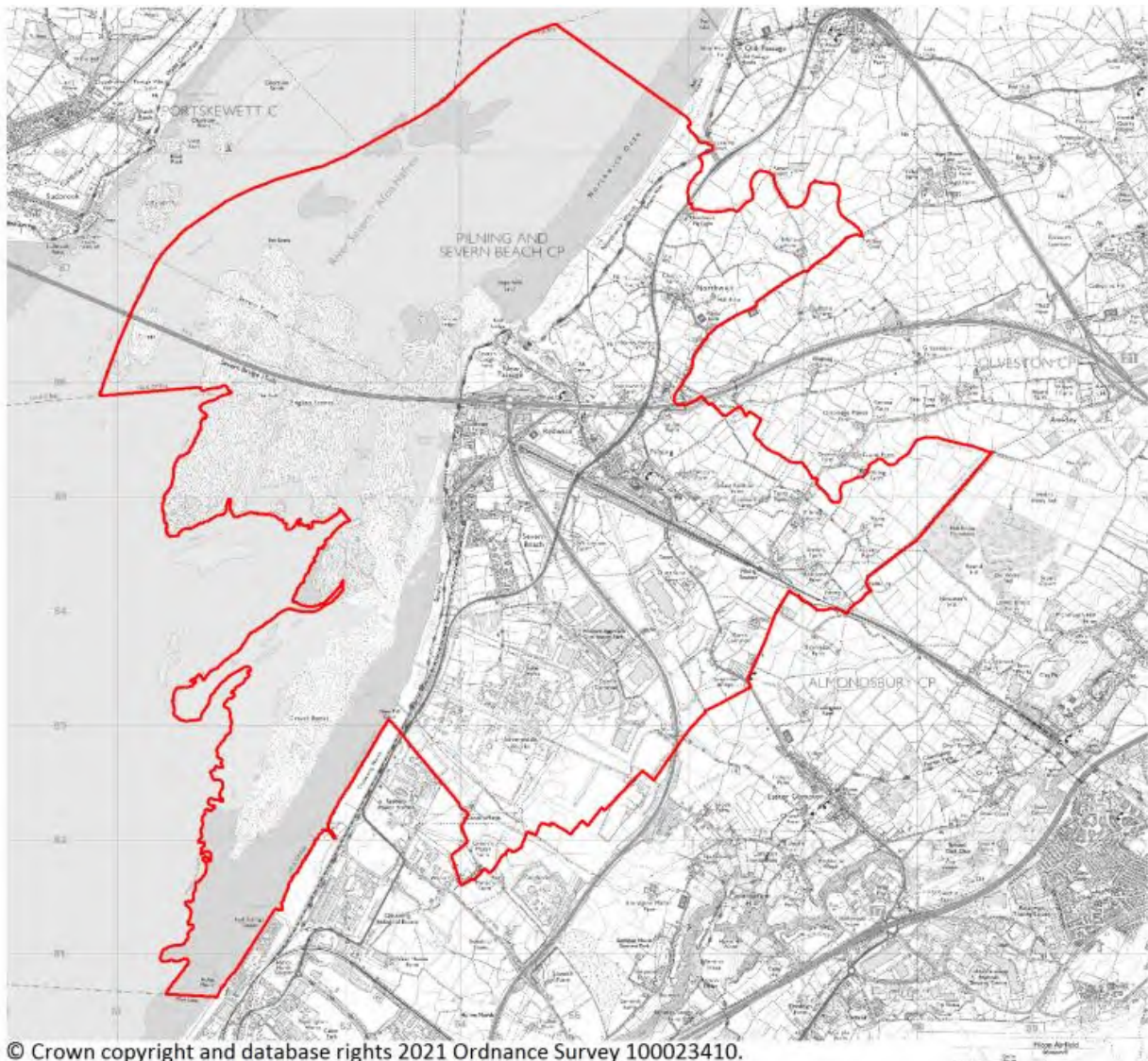
The Neighbourhood Planning (General) Regulations 2012 (as amended)

South Gloucestershire Council has APPROVED, under Article 5A of the above Regulations, the following neighbourhood area:

Neighbourhood Plan Area Name:
Pilning and Severn Beach Neighbourhood Plan Area

Relevant body is:
Pilning and Severn Beach
Parish Council

The approved Neighbourhood Plan Area is identified on the map below.



© Crown copyright and database rights 2021 Ordnance Survey 100023410.

Brian Glasson
Head of Strategic Planning and Housing
South Gloucestershire Council
11 January 2021

You can view this document and the map online and find out more about neighbourhood planning at www.southglos.gov.uk/neighbourhoodplanning. If you would like further details please contact South Gloucestershire Council Strategic Planning Policy and Specialist Advice Team on 01454 863464.