

Contains OS data © Crown copyright and database right 2023.  
Source: Office for National Statistics licensed under the Open Government Licence v 3.0



**Population: 9,617**



**Households: 3,900**



- 98.7% of residents (9,493) live in a household; 1.3% (123) live in a communal establishment.
- 27.8% of residents are aged 65 or over compared to 18.7% for the whole of South Gloucestershire.
- 95.6% of usual residents in Severn Vale identify their ethnic group within the high-level "White" category. 4.3% are from a black, Asian, mixed or other ethnic group compared to 8.8% for the whole of South Gloucestershire.
- There are 1,529 residents (15.9%) who are disabled under the Equalities Act. This compares to 16.3% for the whole of South Gloucestershire.
- 4.3% (344) previously served in the UK Armed Forces (including in reserved UK armed forces).



- There are 896 one-person households (23%). 13.7% of one-person households are residents aged 66 years and over. 71.3% (2,781) are single family households.
- 41.2% of households (1,606) are deprived in one or more dimensions, compared to 47% for South Gloucestershire.
- 33% (1,286) households are owned with a mortgage, loan or shared ownership. 11.3% are privately rented and 5.9% are social rented accommodation. 49.8% (1,943) are owned outright.
- 6.2% of households do not have a car or van compared to the South Gloucestershire wide figure of 12.3%.



- 57.2% (4,613) of residents aged 16 years and over were economically active in the week leading up to Census 2021. 1.8% were unemployed. 42.8% (3,456) were economically inactive, including 32.4% who were retired.
- 42.9% of residents aged 16 and over have a degree level qualification or higher (Level 4). 11.1% stated they had no qualifications.
- 419 residents 16 and over (5.2%) classified as full-time students (NS-SEC).

## 1. Demography and Migration

### T1. Sex

	Severn Vale	%	South Gos.	%	England & Wales	%
<b>Total usual resident population</b>	<b>9,617</b>	<b>100.0</b>	<b>290,424</b>	<b>100.0</b>	<b>59,597,542</b>	<b>100.0</b>
Male	4,857	50.5	143,769	49.5	29,177,340	49.0
Female	4,760	49.5	146,655	50.5	30,420,202	51.0

Source: ONS - 2021 Census (TS008)<sup>1</sup>

### T2. Age

	Severn Vale	%	South Gos.	%	England & Wales	%
<b>Total usual resident population</b>	<b>9,619</b>	<b>100.0</b>	<b>290,423</b>	<b>100.0</b>	<b>59,597,546</b>	<b>100.0</b>
Aged 4 years and under	412	4.3	16,119	5.6	3,232,036	5.4
Aged 5 to 9 years	490	5.1	17,128	5.9	3,524,627	5.9
Aged 10 to 15 years	654	6.8	19,812	6.8	4,274,508	7.2
Aged 16 to 19 years	409	4.3	13,115	4.5	2,716,186	4.6
Aged 20 to 24 years	404	4.2	18,098	6.2	3,602,128	6.0
Aged 25 to 34 years	821	8.5	39,885	13.7	8,050,540	13.5
Aged 35 to 49 years	1,597	16.6	55,813	19.2	11,526,095	19.3
Aged 50 to 64 years	2,162	22.5	56,261	19.4	11,608,079	19.5
Aged 65 to 74 years	1,249	13.0	27,565	9.5	5,923,121	9.9
Aged 75 to 84 years	1,026	10.7	19,089	6.6	3,685,348	6.2
Aged 85 years and over	395	4.1	7,538	2.6	1,454,878	2.4

Source: ONS - 2021 Census (TS007)<sup>2</sup>

### T3. Residence type

	Severn Vale	%	South Gos.	%	England & Wales	%
<b>Total usual resident population</b>	<b>9,616</b>	<b>100.0</b>	<b>9,006</b>	<b>100.0</b>	<b>9,006</b>	<b>100.0</b>
Lives in a household	9,493	98.7	285,030	98.1	58,555,851	98.3
Lives in a communal establishment	123	1.3	5,394	1.9	1,041,691	1.7

Source: ONS - 2021 Census (TS001)<sup>3</sup>

### T4. Number of households

	Severn Vale	%	South Gos.	%	England & Wales	%
<b>All households</b>	<b>3,900</b>	<b>100.0</b>	<b>118,101</b>	<b>100.0</b>	<b>24,783,119</b>	<b>100.0</b>

Source: ONS - 2021 Census (TS041)<sup>4</sup>

## T5. Household composition

	Severn Vale	%	South Glos.	%	England & Wales	%
<b>Total: All households</b>	<b>3,902</b>	<b>100.0</b>	<b>118,101</b>	<b>100.0</b>	<b>24,783,199</b>	<b>100.0</b>
<b>One-person household (total)</b>	<b>896</b>	<b>23.0</b>	<b>30,747</b>	<b>26.0</b>	<b>7,481,788</b>	<b>30.2</b>
Aged 66 years and over	534	13.7	14,375	12.2	3,197,845	12.9
Other	362	9.3	16,372	13.9	4,283,943	17.3
<b>Single family household (total)</b>	<b>2,781</b>	<b>71.3</b>	<b>80,156</b>	<b>67.9</b>	<b>15,613,018</b>	<b>63.0</b>
All aged 66 years and over	705	18.1	12,635	10.7	2,283,288	9.2
Married or civil partnership couple	1,523	39.0	40,524	34.3	7,516,491	30.3
Cohabiting couple family	324	8.3	15,239	12.9	2,864,627	11.6
Lone parent family	222	5.7	11,102	9.4	2,756,737	11.1
Other single family household	7	0.2	656	0.6	191,875	0.8
<b>Other household types (total)</b>	<b>225</b>	<b>5.8</b>	<b>7,198</b>	<b>6.1</b>	<b>1,688,393</b>	<b>6.8</b>
With dependent children	88	2.3	2,368	2.0	656,418	2.6
Other, including all full-time students and all aged 66 years and over	137	3.5	4,830	4.1	1,031,975	4.2

Source: ONS - 2021 Census (TS003)<sup>5</sup>

## T6. Household deprivation

	Severn Vale	%	South Glos.	%	England & Wales	%
<b>Total: All households</b>	<b>3,900</b>	<b>100.0</b>	<b>118,101</b>	<b>100.0</b>	<b>24,783,199</b>	<b>100.0</b>
Household is not deprived in any dimension	2,294	58.8	63,701	53.9	11,968,324	48.3
Household is deprived in one dimension	1,239	31.8	38,638	32.7	8,292,747	33.5
Household is deprived in two dimensions	317	8.1	13,163	11.1	3,536,076	14.3
Household is deprived in three dimensions	49	1.3	2,454	2.1	928,687	3.7
Household is deprived in four dimensions	1	0.0	145	0.1	57,365	0.2

Source: ONS - 2021 Census (TS011)

### Definition of household deprivation

Households in England and Wales were classified in terms of dimensions of deprivation, based on four selected characteristics:

**Education:** A household is classified as deprived in the education dimension if no one has at least level 2 education and no one aged 16 to 18 years is a full-time student.

**Employment:** A household is classified in the employment dimension if any member, not a full-time student, is either unemployed or economically inactive due to long-term sickness or disability.

**Health:** A household is classified as deprived in the health dimension if any person in the household has general health that is bad or very bad or is identified as disabled. People who have assessed their day-to-day activities as limited by long-term physical or mental health conditions or illnesses are considered disabled. This definition of a disabled person meets the harmonised standard for measuring disability and is in line with the Equality Act (2010).

**Housing:** A household is classified as deprived in the housing dimension if the household's accommodation is either overcrowded, in a shared dwelling, or has no central heating.

## T7. Household size

	Severn Vale	%	South Glos.	%	England & Wales	%
<b>Total: All household spaces</b>	<b>3,901</b>	<b>100.0</b>	<b>118,101</b>	<b>100.0</b>	<b>24,783,199</b>	<b>100.0</b>
1 person in household	895	22.9	30,747	26.0	7,481,788	30.2
2 people in household	1,580	40.5	42,563	36.0	8,451,403	34.1
3 people in household	604	15.5	19,821	16.8	3,955,168	16.0
4 people in household	581	14.9	17,980	15.2	3,182,251	12.8
5 people in household	181	4.6	5,059	4.3	1,112,752	4.5
6 people in household	40	1.0	1,360	1.2	373,957	1.5
7 people in household	12	0.3	382	0.3	130,727	0.5
8 or more people in household	8	0.2	189	0.2	95,153	0.4

Source: ONS - 2021 Census (TS017)<sup>6</sup>

## T8. Living arrangements

	Severn Vale	%	South Glos.	%	England & Wales	%
<b>All usual residents aged 16 and over</b>	<b>7,937</b>	<b>100.0</b>	<b>231,986</b>	<b>100.0</b>	<b>47,559,763</b>	<b>100.0</b>
Living in a couple	5,542	69.8	146,549	63.2	27,503,868	57.8
Not living in a couple	2,395	30.2	85,437	36.8	20,055,895	42.2

Source: ONS - 2021 Census (TS010)<sup>7</sup>

## T9. Legal partnership status

	Severn Vale	%	South Glos.	%	England & Wales	%
<b>All usual residents aged 16 and over</b>	<b>8,060</b>	<b>100.0</b>	<b>237,366</b>	<b>100.0</b>	<b>48,566,373</b>	<b>100.0</b>
Never married and never registered a civil partnership	1,987	24.7	85,114	35.9	18,401,778	37.9
Married or in a registered civil partnership	4,810	59.7	113,593	47.9	21,683,101	44.6
Separated, but still legally married or still legally in a civil partnership	116	1.4	4,362	1.8	1,085,987	2.2
Divorced or civil partnership dissolved	575	7.1	20,521	8.6	4,424,346	9.1
Widowed or surviving civil partnership partner	572	7.1	13,776	5.8	2,971,161	6.1

Source: ONS - 2021 Census (TS002)<sup>8</sup>

## T10. Country of birth

	Severn Vale	%	South Glos.	%	England & Wales	%
<b>Total usual resident population</b>	<b>9,618</b>	<b>100.0</b>	<b>290,424</b>	<b>100.0</b>	<b>59,597,542</b>	<b>100.0</b>
<b>Europe</b>	<b>9,317</b>	<b>96.9</b>	<b>274,565</b>	<b>94.5</b>	<b>53,722,544</b>	<b>90.1</b>
United Kingdom	9,057	94.2	259,756	89.4	49,579,570	83.2
EU countries	230	2.4	13,490	4.6	3,643,242	6.1
Europe: Non-EU countries	30	0.3	1,319	0.5	499,732	0.8
<b>Africa</b>	<b>109</b>	<b>1.1</b>	<b>4,356</b>	<b>1.5</b>	<b>1,584,575</b>	<b>2.7</b>
<b>Middle East and Asia</b>	<b>113</b>	<b>1.2</b>	<b>8,488</b>	<b>2.9</b>	<b>3,311,030</b>	<b>5.6</b>
<b>The Americas and the Caribbean</b>	<b>39</b>	<b>0.4</b>	<b>2,365</b>	<b>0.8</b>	<b>785,754</b>	<b>1.3</b>
<b>Antarctica and Oceania (including Australasia) and Other</b>	<b>39</b>	<b>0.4</b>	<b>561</b>	<b>0.2</b>	<b>172,547</b>	<b>0.3</b>
<b>British Overseas</b>	<b>1</b>	<b>0.0</b>	<b>89</b>	<b>0.0</b>	<b>21,092</b>	<b>0.0</b>

Source: ONS - 2021 Census (TS004)<sup>9</sup>

## T11. Length of residence in the UK

	Severn Vale	%	South Glos.	%	England & Wales	%
<b>Total usual resident population</b>	<b>9,616</b>	<b>100.0</b>	<b>290,424</b>	<b>100.0</b>	<b>59,597,542</b>	<b>100.0</b>
Born in the UK	9,057	94.2	259,756	89.4	49,579,570	83.2
10 years or more	382	4.0	16,321	5.6	5,834,889	9.8
5 years or more, but less than 10 years	85	0.9	6,070	2.1	1,735,314	2.9
2 years or more, but less than 5 years	47	0.5	4,430	1.5	1,322,160	2.2
Less than 2 years	45	0.5	3,847	1.3	1,125,609	1.9

Source: ONS - 2021 Census (TS016)<sup>10</sup>

## T12. Passports held

	Severn Vale	%	South Glos.	%	England & Wales	%
<b>Total usual resident population</b>	<b>9,618</b>	<b>100.0</b>	<b>290,426</b>	<b>100.0</b>	<b>59,597,538</b>	<b>100.0</b>
Europe	8,661	90.0	248,432	85.5	49,745,555	83.5
Africa	26	0.3	1,368	0.5	378,306	0.6
Middle East and Asia	26	0.3	3,211	1.1	1,076,219	1.8
The Americas and the Caribbean	10	0.1	908	0.3	300,267	0.5
Antarctica and Oceania, including Australasia	14	0.1	193	0.1	76,872	0.1
British Overseas Territories	0	0.0	0	0.0	639	0.0
No passport held	881	9.2	36,314	12.5	8,019,680	13.5

Source: ONS - 2021 Census (TS005)<sup>11</sup>

## 2. Ethnicity, Identity, Language and Religion

### T13. Ethnicity

Ethnic Group	Severn Vale	%	South Glos.	%	England & Wales	%
<b>Total usual resident population</b>	<b>9,618</b>	<b>100.0</b>	<b>290,424</b>	<b>100.0</b>	<b>59,597,542</b>	<b>100.0</b>
<b>Asian, Asian British or Asian Welsh - Total</b>	<b>145</b>	<b>1.5</b>	<b>11,094</b>	<b>3.8</b>	<b>5,515,420</b>	<b>9.3</b>
Bangladeshi	0	0.0	581	0.2	644,881	1.1
Chinese	19	0.2	2,113	0.7	445,619	0.7
Indian	73	0.8	4,867	1.7	1,864,318	3.1
Pakistani	13	0.1	1,352	0.5	1,587,819	2.7
Other Asian	40	0.4	2,181	0.8	972,783	1.6
<b>Black, Black British, Black Welsh, Caribbean or African - Total</b>	<b>43</b>	<b>0.4</b>	<b>4,534</b>	<b>1.6</b>	<b>2,409,278</b>	<b>4.0</b>
African	24	0.2	2,787	1.0	1,488,381	2.5
Caribbean	16	0.2	1,219	0.4	623,119	1.0
Other Black	3	0.0	528	0.2	297,778	0.5
<b>Mixed or Multiple ethnic groups - Total</b>	<b>168</b>	<b>1.7</b>	<b>7,289</b>	<b>2.5</b>	<b>1,717,976</b>	<b>2.9</b>
White and Asian	62	0.6	1,953	0.7	488,225	0.8
White and Black African	15	0.2	905	0.3	249,596	0.4
White and Black Caribbean	32	0.3	2,711	0.9	513,042	0.9
Other Mixed or Multiple ethnic groups	59	0.6	1,720	0.6	467,113	0.8
<b>White - Total</b>	<b>9,190</b>	<b>95.6</b>	<b>264,856</b>	<b>91.2</b>	<b>48,699,249</b>	<b>81.7</b>
English, Welsh, Scottish, Northern Irish or British	8,882	92.3	249,160	85.8	44,355,038	74.4
Irish	65	0.7	1,327	0.5	507,465	0.9
Gypsy or Irish Traveller	0	0.0	443	0.2	67,768	0.1
Roma	5	0.1	373	0.1	100,981	0.2
Other White	238	2.5	13,553	4.7	3,667,997	6.2
<b>Other ethnic group - Total</b>	<b>72</b>	<b>0.7</b>	<b>2,651</b>	<b>0.9</b>	<b>1,255,619</b>	<b>2.1</b>
Arab	18	0.2	751	0.3	331,844	0.6
Any other ethnic group	54	0.6	1,900	0.7	923,775	1.6

Source: ONS - 2021 Census (TS021)<sup>12</sup>

### T14. National identity

	Severn Vale	%	South Glos.	%	England & Wales	%
<b>Total usual resident population</b>	<b>9,618</b>	<b>100.0</b>	<b>290,422</b>	<b>100.0</b>	<b>59,597,541</b>	<b>100.0</b>
British only identity	5,740	59.7	163,084	56.2	32,677,619	54.8
English only identity	1,499	15.6	47,155	16.2	8,898,728	14.9
English and British only identity	1,658	17.2	50,087	17.2	8,112,809	13.6
Welsh only identity	132	1.4	2,976	1.0	1,908,644	3.2
Welsh and British only identity	59	0.6	1,499	0.5	337,607	0.6
Any other combination of only UK identities	112	1.2	2,760	1.0	707,985	1.2
Non-UK identity only	312	3.2	18,220	6.3	5,761,564	9.7
UK identity and non-UK identity	106	1.1	4,641	1.6	1,192,585	2.0

Source: ONS - 2021 Census (TS027)<sup>13</sup>

## T15. Religion

	Severn Vale	%	South Glos.	%	England & Wales	%
<b>Total usual resident population</b>	<b>9,617</b>	<b>100.0</b>	<b>290,425</b>	<b>100.0</b>	<b>59,597,540</b>	<b>100.0</b>
No religion	3,670	38.2	133,749	46.1	22,162,062	37.2
Christian	5,120	53.2	128,014	44.1	27,522,672	46.2
Buddhist	27	0.3	1,056	0.4	272,508	0.5
Hindu	61	0.6	2,896	1.0	1,032,775	1.7
Jewish	7	0.1	173	0.1	271,327	0.5
Muslim	61	0.6	4,720	1.6	3,868,133	6.5
Sikh	45	0.5	1,006	0.3	524,140	0.9
Other religion	33	0.3	1,319	0.5	348,334	0.6
Not answered	593	6.2	17,492	6.0	3,595,589	6.0

Source: ONS - 2021 Census (TS030)<sup>14</sup>

## T16. Household language

	Severn Vale	%	South Glos.	%	England & Wales	%
<b>Total: All households</b>	<b>3,900</b>	<b>100.0</b>	<b>118,101</b>	<b>100.0</b>	<b>24,783,199</b>	<b>100.0</b>
All adults in household have English in England, or English or Welsh in Wales as a main language	3,791	97.2	110,714	93.7	22,215,902	89.6
At least one but not all adults in household have English in England, or English or Welsh in Wales as a main language	66	1.7	2,893	2.4	1,036,736	4.2
No adults in household, but at least one person aged 3 to 15 years, has English in England or English or Welsh in Wales as a main language	10	0.3	1,018	0.9	330,002	1.3
No people in household have English in England, or English or Welsh in Wales as a main language	33	0.8	3,476	2.9	1,200,559	4.8

Source: ONS - 2021 Census (TS025)<sup>15</sup>

## 3. Health, Disability and Unpaid Care

### T17. General health

	Severn Vale	%	South Glos.	%	England & Wales	%
<b>Total usual resident population</b>	<b>9,616</b>	<b>100.0</b>	<b>290,424</b>	<b>100.0</b>	<b>59,597,542</b>	<b>100.0</b>
Very good health	5,016	52.2	144,395	49.7	28,827,308	48.4
Good health	3,156	32.8	99,207	34.2	20,046,220	33.6
Fair health	1,077	11.2	34,595	11.9	7,597,001	12.7
Bad health	282	2.9	9,529	3.3	2,412,358	4.0
Very bad health	85	0.9	2,698	0.9	714,655	1.2

Source: ONS - 2021 Census (TS037)<sup>16</sup>



## T18. Disability

	Severn Vale	%	South Glos.	%	England & Wales	%
<b>Total usual resident population</b>	<b>9,617</b>	<b>100.0</b>	<b>290,423</b>	<b>100.0</b>	<b>59,597,542</b>	<b>100.0</b>
<b>Total: Disabled under the Equality Act</b>	<b>1,529</b>	<b>15.9</b>	<b>47,429</b>	<b>16.3</b>	<b>10,444,776</b>	<b>17.5</b>
Disabled under the Equality Act: Day-to-day activities limited a lot	555	5.8	18,212	6.3	4,459,763	7.5
Disabled under the Equality Act: Day-to-day activities limited a little	974	10.1	29,217	10.1	5,985,013	10.0
<b>Total: Not disabled under the Equality Act</b>	<b>8,088</b>	<b>84.1</b>	<b>242,994</b>	<b>83.7</b>	<b>49,152,766</b>	<b>82.5</b>
Not disabled under the Equality Act: Has long term physical or mental health condition but day-to-day activities are not limited	797	8.3	22,016	7.6	4,062,569	6.8
Not disabled under the Equality Act: No long-term physical or mental health conditions	7,291	75.8	220,978	76.1	45,090,197	75.7

Source: ONS - 2021 Census (TS038)<sup>17</sup>

## T19. Provision of unpaid care by number of hours

	Severn Vale	%	South Glos.	%	England & Wales	%
<b>Total: All usual residents aged 5 and over</b>	<b>9,205</b>	<b>100.0</b>	<b>274,305</b>	<b>100.0</b>	<b>56,365,506</b>	<b>100.0</b>
<b>Provides no unpaid care</b>	<b>8,319</b>	<b>90.4</b>	<b>250,653</b>	<b>91.4</b>	<b>51,376,490</b>	<b>91.1</b>
<b>Provides 19 hours or less unpaid care a week</b>	<b>556</b>	<b>6.0</b>	<b>13,007</b>	<b>4.7</b>	<b>2,442,050</b>	<b>4.3</b>
Provides 9 hours or less unpaid care a week	423	4.6	9,668	3.5	1,764,549	3.1
Provides 10 to 19 hours unpaid care a week	133	1.4	3,339	1.2	677,501	1.2
<b>Provides 20 to 49 hours unpaid care a week</b>	<b>106</b>	<b>1.2</b>	<b>4,204</b>	<b>1.5</b>	<b>1,035,366</b>	<b>1.8</b>
Provides 20 to 34 hours unpaid care a week	56	0.6	2,088	0.8	483,300	0.9
Provides 35 to 49 hours unpaid care a week	50	0.5	2,116	0.8	552,066	1.0
<b>Provides 50 or more hours unpaid care a week</b>	<b>224</b>	<b>2.4</b>	<b>6,441</b>	<b>2.3</b>	<b>1,511,600</b>	<b>2.7</b>

Source: ONS - 2021 Census (TS039)<sup>18</sup>

## 4. Labour market

### T20. Employment history

	Severn Vale	%	South Glos.	%	England & Wales	%
<b>Total: All usual residents aged 16 years and over not in employment the week before the census</b>	<b>3,598</b>	<b>100.0</b>	<b>89,754</b>	<b>100.0</b>	<b>20,792,707</b>	<b>100.0</b>
Not in employment: Worked in the last 12 months	395	11.0	12,945	14.4	2,729,755	13.1
Not in employment: Not worked in the last 12 months	2,719	75.6	60,322	67.2	12,762,983	61.4
Not in employment: Never worked	484	13.5	16,487	18.4	5,299,969	25.5

Source: ONS - 2021 Census (TS065)<sup>19</sup>



## T21. Economic activity

Economic activity	Severn Vale	%	South Glos.	%	England & Wales	%
<b>Total: All usual residents aged 16 years and over</b>	<b>8,069</b>	<b>100.0</b>	<b>237,366</b>	<b>100.0</b>	<b>48,566,371</b>	<b>100.0</b>
<b>Economically active (excluding full-time students)</b>	<b>4,483</b>	<b>55.6</b>	<b>147,707</b>	<b>62.2</b>	<b>28,336,631</b>	<b>58.3</b>
In employment	4,363	54.1	143,392	60.4	26,960,268	55.5
Unemployed	120	1.5	4,315	1.8	1,376,363	2.8
<b>Economically active and a full-time student</b>	<b>130</b>	<b>1.6</b>	<b>5,759</b>	<b>2.4</b>	<b>1,112,219</b>	<b>2.3</b>
In employment	104	1.3	4,220	1.8	813,397	1.7
Unemployed	26	0.3	1,539	0.6	298,822	0.6
<b>Economically inactive</b>	<b>3,456</b>	<b>42.8</b>	<b>83,900</b>	<b>35.3</b>	<b>19,117,521</b>	<b>39.4</b>
Retired	2,611	32.4	53,153	22.4	10,513,713	21.6
Student	315	3.9	11,240	4.7	2,740,634	5.6
Looking after home or family	237	2.9	7,439	3.1	2,317,340	4.8
Long-term sick or disabled	144	1.8	6,581	2.8	2,025,621	4.2
Other	149	1.8	5,487	2.3	1,520,213	3.1

Source: ONS - 2021 Census (TS066)<sup>20</sup>

## T22. Highest level of qualification

	Severn Vale	%	South Glos.	%	England & Wales	%
<b>Total: All usual residents aged 16 years and over</b>	<b>8,057</b>	<b>100.0</b>	<b>237,364</b>	<b>100.0</b>	<b>48,566,373</b>	<b>100.0</b>
No qualifications	892	11.1	33,792	14.2	8,827,472	18.2
Level 1 and entry level qualifications	672	8.3	23,996	10.1	4,679,223	9.6
Level 2 qualifications	1,103	13.7	33,959	14.3	6,493,490	13.4
Apprenticeship	448	5.6	15,142	6.4	2,590,252	5.3
Level 3 qualifications	1,314	16.3	46,440	19.6	8,225,629	16.9
Level 4 qualifications or above	3,457	42.9	78,233	33.0	16,413,231	33.8
Other qualifications	171	2.1	5,802	2.4	1,337,076	2.8

Source: ONS - 2021 Census (TS067)

The highest level of qualification is derived from the question asking people to indicate all qualifications held, or their nearest equivalent. This may include foreign qualifications where they were matched to the closest UK equivalent. The types of qualification included in each level are:

**Level 1 and entry level qualifications:** 1 to 4 GCSEs grade A\* to C , Any GCSEs at other grades, O levels or CSEs (any grades), 1 AS level, NVQ level 1, Foundation GNVQ, Basic or Essential Skills;

**Level 2 qualifications:** 5 or more GCSEs (A\* to C or 9 to 4), O levels (passes), CSEs (grade 1), School Certification, 1 A level, 2 to 3 AS levels, VCEs, Intermediate or Higher Diploma, Welsh Baccalaureate Intermediate Diploma, NVQ level 2, Intermediate GNVQ, City and Guilds Craft, BTEC First or General Diploma, RSA Diploma;

**Level 3 qualifications:** 2 or more A levels or VCEs, 4 or more AS levels, Higher School Certificate, Progression or Advanced Diploma, Welsh Baccalaureate Advance Diploma, NVQ level 3; Advanced GNVQ, City and Guilds Advanced Craft, ONC, OND, BTEC National, RSA Advanced Diploma;

**Level 4 qualifications or above:** degree (BA, BSc), higher degree (MA, PhD, PGCE), NVQ level 4 to 5, HNC, HND, RSA Higher Diploma, BTEC Higher level, professional qualifications (for example, teaching, nursing, accountancy); Other qualifications: vocational or work-related qualifications, other qualifications achieved in England or Wales, qualifications achieved outside England or Wales (equivalent not stated or unknown). There are quality considerations about higher education qualifications, including those at Level 4+, responses from older people and international migrants, and comparability with 2011 Census data.

## 5. Work and Travel

### Note on the Covid-19 pandemic

Each census is a unique snapshot in time and this census was conducted in March 2021. At the time, England and Wales was in the middle of a period of lockdown due to the ongoing impact of the coronavirus pandemic. During this period, our working patterns were impacted due to the national lockdown whilst a significant proportion of the workforce were on furlough. Many people were also working from home for the first time as organisations responded to the latest government guidance. However, this was a period when the government advice was for people to stay at home and only attend work if there was no alternative. Many people were still on furlough and, whilst there was guidance on how to complete the questions, it is not clear whether people may have also answered based on a period before the pandemic.

Since the time the census data was collated, the workforce is still adjusting to new ways of working, hybrid working, and many people will also have changed jobs or left the workforce in this time.

### T23. Hours worked

	Severn Vale	%	South Glos.	%	England & Wales	%
<b>Total: All usual residents aged 16 years and over in employment the week before the census</b>	<b>4,462</b>	<b>100.0</b>	<b>147,612</b>	<b>100.0</b>	<b>27,773,665</b>	<b>100.0</b>
<b>Part-time</b>	<b>1,429</b>	<b>32.0</b>	<b>43,784</b>	<b>29.7</b>	<b>8,281,004</b>	<b>29.8</b>
15 hours or less worked	563	12.6	14,192	9.6	2,855,066	10.3
16 to 30 hours worked	866	19.4	29,592	20.0	5,425,938	19.5
<b>Full-time</b>	<b>3,033</b>	<b>68.0</b>	<b>103,828</b>	<b>70.3</b>	<b>19,492,661</b>	<b>70.2</b>
31 to 48 hours worked	2,471	55.4	90,398	61.2	16,427,651	59.1
49 or more hours worked	562	12.6	13,430	9.1	3,065,010	11.0

Source: ONS - 2021 Census (TS059)<sup>21</sup>

### T24. Occupation

	Severn Vale	%	South Glos.	%	England & Wales	%
<b>Total: All usual residents aged 16 years and over in employment the week before the census</b>	<b>4,458</b>	<b>100.0</b>	<b>147,612</b>	<b>100.0</b>	<b>27,773,667</b>	<b>100.0</b>
1. Managers, directors and senior officials	869	19.5	17,918	12.1	3,547,854	12.8
2. Professional occupations	1,161	26.0	31,300	21.2	5,606,115	20.2
3. Associate professional and technical occupations	595	13.3	19,437	13.2	3,661,022	13.2
4. Administrative and secretarial occupations	465	10.4	17,372	11.8	2,574,681	9.3
5. Skilled trades occupations	452	10.1	16,114	10.9	2,849,754	10.3
6. Caring, leisure and other service occupations	259	5.8	12,405	8.4	2,600,177	9.4
7. Sales and customer service occupations	212	4.8	10,669	7.2	2,087,112	7.5
8. Process, plant and machine operatives	146	3.3	8,855	6.0	1,940,141	7.0
9. Elementary occupations	299	6.7	13,542	9.2	2,906,811	10.5

Source: ONS - 2021 Census (TS063)<sup>22</sup>

## T25. Industry

	Severn Vale	%	South Glos.	%	England & Wales	%
<b>Total: All usual residents aged 16 years and over in employment the week before the census</b>	<b>4,465</b>	<b>100.0</b>	<b>147,615</b>	<b>100.0</b>	<b>27,773,661</b>	<b>100.0</b>
A: Agriculture, Forestry and fishing	128	2.9	782	0.5	237,049	0.9
B: Mining and quarrying	6	0.1	191	0.1	42,699	0.2
C: Manufacturing	362	8.1	10,680	7.2	2,040,203	7.3
D: Electricity, gas, steam and air conditioning supply	37	0.8	996	0.7	161,604	0.6
E: Water supply; Sewerage, Waste management and Remediation activities	57	1.3	1,179	0.8	203,710	0.7
F: Construction	401	9.0	14,447	9.8	2,406,228	8.7
G: Wholesale and retail trade; repair of motor vehicles and motorcycles	536	12.0	22,013	14.9	4,156,299	15.0
H: Transport and storage	144	3.2	7,297	4.9	1,381,362	5.0
I: Accommodation and food service activities	159	3.6	5,463	3.7	1,362,991	4.9
J: Information and communication	247	5.5	7,264	4.9	1,283,997	4.6
K: Financial and insurance activities	196	4.4	7,394	5.0	1,046,740	3.8
L: Real estate activities	89	2.0	2,093	1.4	430,490	1.5
M: Professional, scientific and technical activities	395	8.8	9,239	6.3	1,828,909	6.6
N: Administrative and support service activities	205	4.6	7,287	4.9	1,457,167	5.2
O: Public administration and defence; compulsory social security	328	7.3	11,824	8.0	1,646,592	5.9
P: Education	416	9.3	13,387	9.1	2,732,876	9.8
Q: Human health and social work activities	570	12.8	20,512	13.9	4,089,373	14.7
R, S, T, U Other	189	4.2	5,567	3.8	1,265,372	4.6

Source: ONS - 2021 Census (TS060)<sup>23</sup>

## T26. Method used to travel to work

	Severn Vale	%	South Glos.	%	England & Wales	%
<b>Total: All usual residents aged 16 years and over in employment the week before the census</b>	<b>4,464</b>	<b>100.0</b>	<b>147,610</b>	<b>100.0</b>	<b>27,773,666</b>	<b>100.0</b>
Work mainly at or from home	1,982	44.4	52,349	35.5	8,671,722	31.2
Underground, metro, light rail, tram	1	0.0	40	0.0	505,311	1.8
Train	7	0.2	438	0.3	529,461	1.9
Bus, minibus or coach	42	0.9	4,442	3.0	1,160,990	4.2
Taxi	1	0.0	276	0.2	200,490	0.7
Motorcycle, scooter or moped	20	0.4	968	0.7	128,849	0.5
Driving a car or van	2,101	47.1	71,696	48.6	12,524,571	45.1
Passenger in a car or van	98	2.2	4,890	3.3	1,083,447	3.9
Bicycle	58	1.3	3,060	2.1	569,295	2.0
On foot	123	2.8	8,371	5.7	2,113,657	7.6
Other method of travel to work	31	0.7	1,080	0.7	285,873	1.0

Source: ONS - 2021 Census (TS061)<sup>24</sup>

## T27. National Statistic Social Economic Classification (NS-SeC)

	Severn Vale	%	South Glos.	%	England & Wales	%
<b>Total: All usual residents aged 16 years and over</b>	<b>8,059</b>	<b>100.0</b>	<b>237,366</b>	<b>100.0</b>	<b>48,566,373</b>	<b>100.0</b>
L1, L2 and L3 Higher managerial, administrative and professional occupations	1,788	22.2	35,126	14.8	6,353,898	13.1
L4, L5 and L6 Lower managerial, administrative and professional occupations	2,049	25.4	51,723	21.8	9,669,812	19.9
L7 Intermediate occupations	1,011	12.5	32,883	13.9	5,551,417	11.4
L8 and L9 Small employers and own account workers	1,031	12.8	23,026	9.7	5,131,554	10.6
L10 and L11 Lower supervisory and technical occupations	313	3.9	13,120	5.5	2,620,604	5.4
L12 Semi-routine occupations	596	7.4	26,470	11.2	5,518,715	11.4
L13 Routine occupations	525	6.5	26,622	11.2	5,859,961	12.1
L14.1 and L14.2 Never worked and long-term unemployed	327	4.1	11,843	5.0	4,133,958	8.5
L15 Full-time students	419	5.2	16,553	7.0	3,726,454	7.7

Source: ONS - 2021 Census (TS062)<sup>25</sup>

## 6. Housing

### T28. Accommodation type

	Severn Vale	%	South Glos.	%	England & Wales	%
<b>Total: All households</b>	<b>3,900</b>	<b>100.0</b>	<b>118,101</b>	<b>100.0</b>	<b>24,783,200</b>	<b>100.0</b>
Detached	2,245	57.6	31,401	26.6	5,753,255	23.2
Semi-detached	972	24.9	40,784	34.5	7,810,175	31.5
Terraced	478	12.3	30,133	25.5	5,739,467	23.2
In a purpose-built block of flats or tenement	123	3.2	12,339	10.4	4,126,433	16.7
Part of a converted or shared house, including bedsits	24	0.6	1,515	1.3	845,606	3.4
Part of another converted building, for example, former school, church or warehouse	18	0.5	472	0.4	195,546	0.8
In a commercial building, for example, in an office building, hotel or over a shop	18	0.5	672	0.6	208,456	0.8
A caravan or other mobile or temporary structure	22	0.6	785	0.7	104,262	0.4

Source: ONS - 2021 Census (TS044)

## T29. Tenure of household

	Severn Vale	%	South Glos.	%	England & Wales	%
<b>Total: All households</b>	<b>3,898</b>	<b>100.0</b>	<b>118,101</b>	<b>100.0</b>	<b>24,783,199</b>	<b>100.0</b>
<b>Owned</b>	<b>3,207</b>	<b>82.3</b>	<b>85,492</b>	<b>72.4</b>	<b>15,258,981</b>	<b>61.6</b>
Owns outright	1,943	49.8	43,220	36.6	8,136,782	32.8
Owns with a mortgage or loan	1,264	32.4	42,272	35.8	7,122,199	28.7
<b>Shared ownership</b>	<b>22</b>	<b>0.6</b>	<b>1,231</b>	<b>1.0</b>	<b>240,234</b>	<b>1.0</b>
<b>Social rented</b>	<b>229</b>	<b>5.9</b>	<b>12,738</b>	<b>10.8</b>	<b>4,227,756</b>	<b>17.1</b>
Rents from council or Local Authority	33	0.8	2,122	1.8	2,061,789	8.3
Social rented: Other social rented	196	5.0	10,616	9.0	2,165,967	8.7
<b>Private rented</b>	<b>439</b>	<b>11.3</b>	<b>18,588</b>	<b>15.7</b>	<b>5,023,531</b>	<b>20.3</b>
Private landlord or letting agency	369	9.5	16,441	13.9	4,468,534	18.0
Other private rented	70	1.8	2,147	1.8	554,997	2.2
<b>Lives rent free</b>	<b>1</b>	<b>0.0</b>	<b>52</b>	<b>0.0</b>	<b>32,697</b>	<b>0.1</b>

Source: ONS - 2021 Census (TS054)<sup>26</sup>

## T30. Number of bedrooms

	Severn Vale	%	South Glos.	%	England & Wales	%
<b>Total: All households</b>	<b>3,899</b>	<b>100.0</b>	<b>118,101</b>	<b>100.0</b>	<b>24,783,199</b>	<b>100.0</b>
1 bedroom	154	3.9	9,363	7.9	2,826,033	11.4
2 bedrooms	544	14.0	25,231	21.4	6,715,736	27.1
3 bedrooms	1,375	35.3	52,165	44.2	10,019,713	40.4
4 or more bedrooms	1,826	46.8	31,342	26.5	5,221,717	21.1

Source: ONS - 2021 Census (TS050)

## T31. Number of rooms (VOA)

	Severn Vale	%	South Glos.	%	England & Wales	%
<b>Total: All households</b>	<b>3,901</b>	<b>100.0</b>	<b>118,101</b>	<b>100.0</b>	<b>24,783,197</b>	<b>100.0</b>
1 room	13	0.3	442	0.4	260,360	1.1
2 rooms	135	3.5	8,421	7.1	2,435,589	9.8
3 rooms	411	10.5	21,593	18.3	5,716,952	23.1
4 rooms	935	24.0	30,096	25.5	6,897,000	27.8
5 rooms	1,067	27.4	36,962	31.3	5,742,998	23.2
6 rooms	701	18.0	13,454	11.4	2,165,070	8.7
7 rooms	387	9.9	5,023	4.3	920,198	3.7
8 rooms	159	4.1	1,374	1.2	367,001	1.5
9 or more rooms	93	2.4	736	0.6	278,029	1.1

Source: ONS - 2021 Census (TS051)

**Note:** In a change from previous censuses, Census21 used Valuation Office Agency (VOA) data to count the number of rooms in a dwelling. All rooms in a dwelling apart from bathrooms, toilets, halls or landings, kitchens, conservatories or utility rooms are counted. If two rooms have been converted into one, they are counted as one room. For households living in a shared dwelling, the number of rooms are counted for the whole dwelling and not the individual household. More information on data collection and methodology can be found on the [ONS website](#).

### T32. Occupancy rating for bedrooms

	Severn Vale	%	South Glos.	%	England & Wales	%
<b>Total: All households</b>	<b>3,900</b>	<b>100.0</b>	<b>118,101</b>	<b>100.0</b>	<b>24,783,199</b>	<b>100.0</b>
Occupancy rating of bedrooms: +2 or more	2,405	61.7	51,532	43.6	8,902,471	35.9
Occupancy rating of bedrooms: +1	1,032	26.5	38,504	32.6	8,258,721	33.3
Occupancy rating of bedrooms: 0	423	10.8	25,456	21.6	6,567,584	26.5
Occupancy rating of bedrooms: -1	34	0.9	2,327	2.0	880,672	3.6
Occupancy rating of bedrooms: -2 or less	6	0.2	282	0.2	173,751	0.7

Source: ONS - 2021 Census (TS052)

**Note:** Occupancy rating provides a measure of whether a household's accommodation is overcrowded or under-occupied. An occupancy rating of negative 1 or less implies that a household has fewer bedrooms than the standard requirement, positive 1 implies that they have more bedrooms than required, and 0 implies that they met the standard required.

### T33. Central heating

	Severn Vale	%	South Glos.	%	England & Wales	%
<b>Total: All households</b>	<b>3,900</b>	<b>100.0</b>	<b>118,101</b>	<b>100.0</b>	<b>24,783,199</b>	<b>100.0</b>
No central heating	28	0.7	1,081	0.9	367,132	1.5
Mains gas only	2,339	60.0	91,075	77.1	18,298,725	73.8
Tank or bottled gas only	142	3.6	1,257	1.1	260,102	1.0
Electric only	151	3.9	8,640	7.3	2,113,111	8.5
Oil only	689	17.7	4,652	3.9	865,940	3.5
Wood only	18	0.5	147	0.1	35,723	0.1
Solid fuel only	12	0.3	163	0.1	49,459	0.2
Renewable energy only	49	1.3	487	0.4	98,732	0.4
District or communal heat networks only	0	0.0	442	0.4	220,917	0.9
Other central heating only	7	0.2	507	0.4	225,381	0.9
Two or more types of central heating (not including renewable energy)	422	10.8	8,960	7.6	2,113,325	8.5
Two or more types of central heating (including renewable energy)	43	1.1	690	0.6	134,652	0.5

Source: ONS - 2021 Census (TS046)<sup>27</sup>

### T34. Car or van availability

	Severn Vale	%	South Glos.	%	England & Wales	%
<b>Total: All households</b>	<b>3,900</b>	<b>100.0</b>	<b>118,101</b>	<b>100.0</b>	<b>24,783,199</b>	<b>100.0</b>
No cars or vans in household	242	6.2	14,585	12.3	5,777,957	23.3
1 car or van in household	1,232	31.6	47,411	40.1	10,236,898	41.3
2 cars or vans in household	1,598	41.0	40,325	34.1	6,485,738	26.2
3 or more cars or vans in household	828	21.2	15,780	13.4	2,282,606	9.2

Source: ONS - 2021 Census (TS045)<sup>28</sup>

## 7. Armed forces

### T35. Previously served in the armed forces

	Severn Vale	%	South Glos.	%	England & Wales	%
<b>Total: All usual residents aged 16 and over</b>	<b>8,059</b>	<b>100.0</b>	<b>237,366</b>	<b>100.0</b>	<b>48,566,373</b>	<b>100.0</b>
Previously served in UK regular armed forces	252	3.1	6,970	2.9	1,413,296	2.9
Previously served in UK reserve armed forces	70	0.9	2,124	0.9	360,770	0.7
Previously served in both regular and reserve UK armed forces	22	0.3	404	0.2	79,046	0.2
Has not previously served in any UK armed forces	7,715	95.7	227,868	96.0	46,713,261	96.2

Source: ONS - 2021 Census (TS071)<sup>29</sup>

### T36. Number of people in the household who have previously served in UK armed forces

	Severn Vale	%	South Glos.	%	England & Wales	%
<b>Total: All households</b>	<b>3,900</b>	<b>100.0</b>	<b>118,101</b>	<b>100.0</b>	<b>24,783,199</b>	<b>100.0</b>
No people in the household previously served in UK armed forces	3,581	91.8	109,218	92.5	23,038,121	93.0
1 person in the household previously served in UK armed forces	304	7.8	8,534	7.2	1,675,603	6.8
2 people in the household previously served in UK armed forces	14	0.4	341	0.3	67,714	0.3
3 or more people in the household previously served in UK armed forces	1	0.0	8	0.0	1,761	0.0

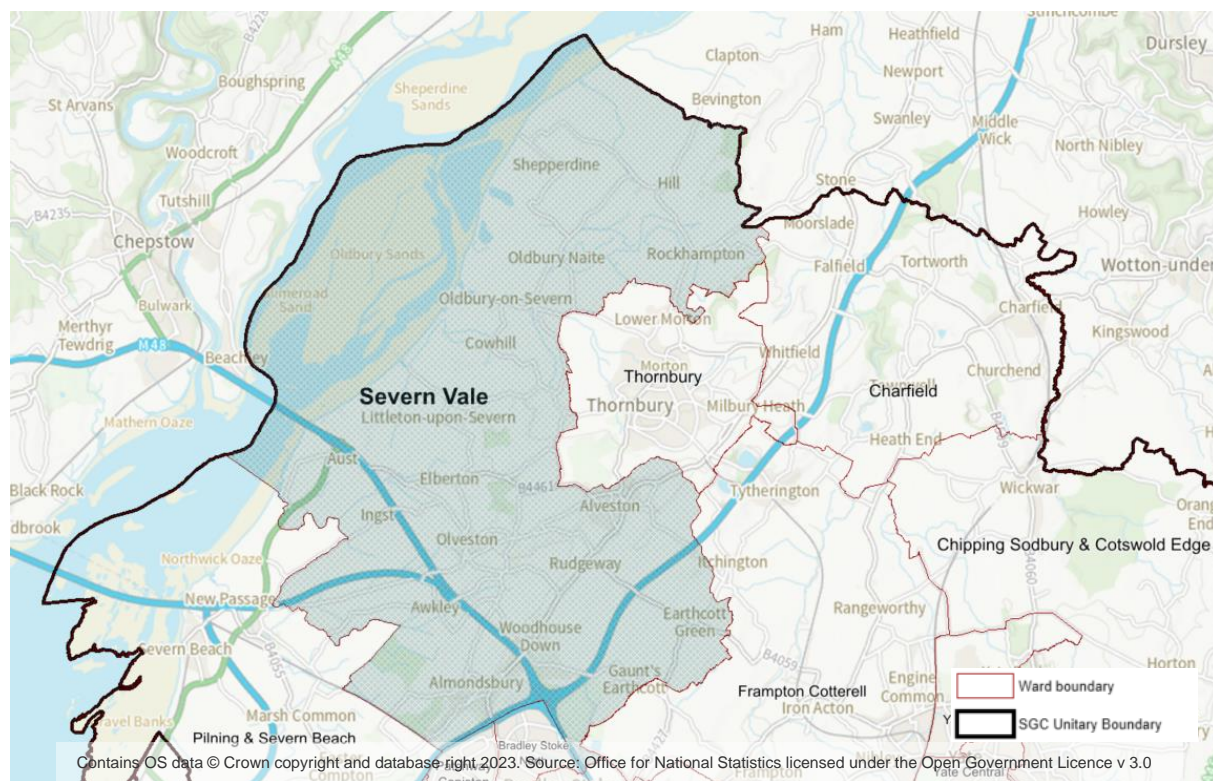
Source: ONS - 2021 Census (TS072)



# Severn Vale geography

Severn Vale ward occupies a large rural area to the north of Pilning & Severn Beach, Pathway Coniston and Bradley Stoke. It is also next to the wards of Thornbury, Frampton Cotterell and Charfield.

Map showing location of Severn Vale and neighbouring wards



To produce ward data, ONS use best-fit estimates based on combining the data from Output Areas. Best-fitting is the method used to produce estimates for any output geography using Output Areas (OA) as building blocks. These are the lowest level of geographical area for census statistics comprising a usually resident population between 100 and 625 persons and 40 to 250 households.

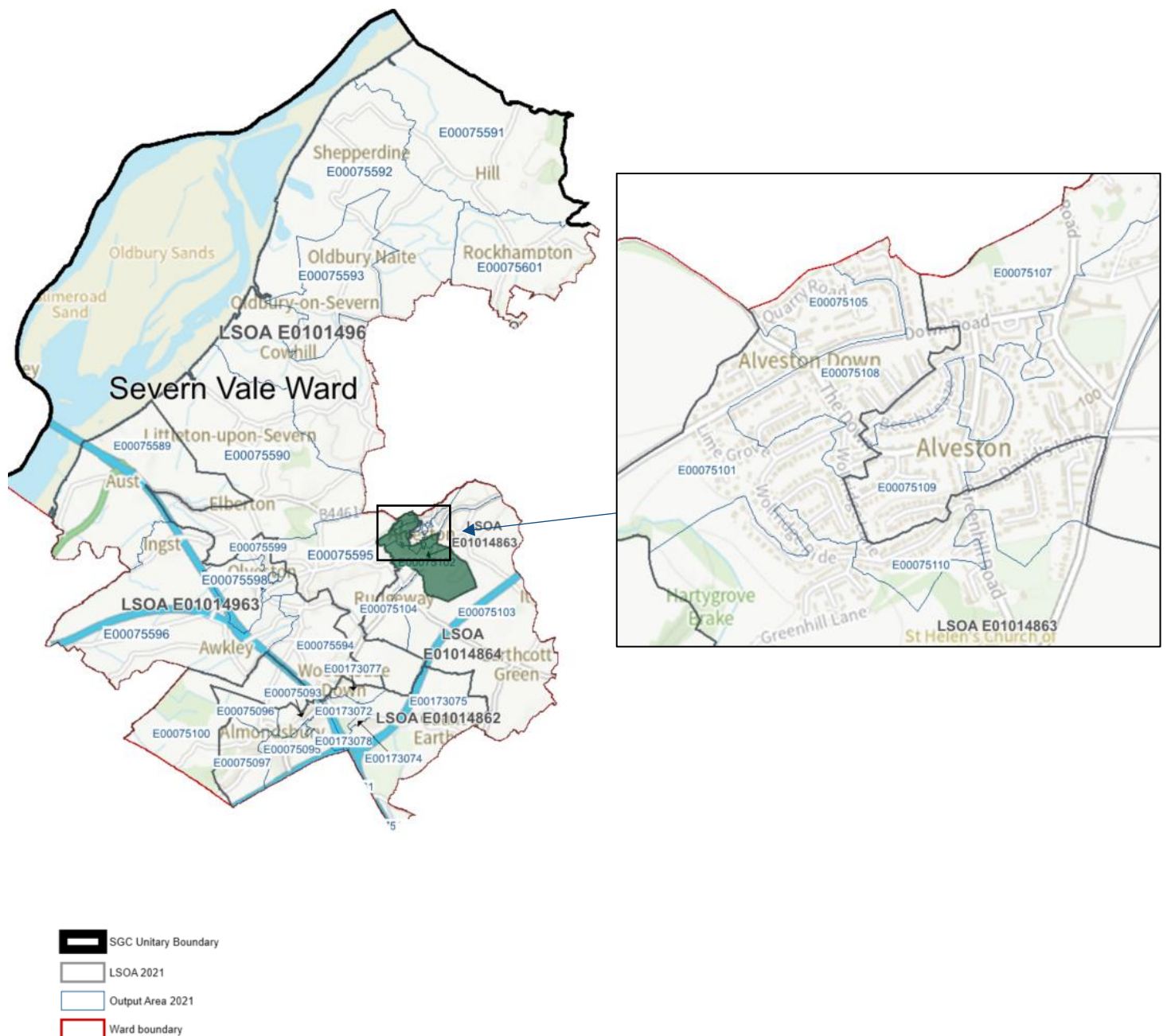
Ward data is determined by the aggregation of data for each Output Area (the smallest geography) using the best-fit methodology. Each OA has a [population weighted centroid](#) which is a single summary point that reflects the spatial distribution of the Census 2021 population. The OA is allocated to the ward in which the population weighted centroid is located. The list of Output Areas below, are the ones used to calculate the ward data. Due to statistical disclosure control, aggregating the totals below may result in a small difference in ward totals that may be published elsewhere.

Where we want to understand a smaller or bespoke population area, OAs and Lower layer Super Output Areas (LSOAs) are used. LSOAs are made up of groups of OAs, usually four or five and comprise between 400 and 1,200 households. They usually have a resident population between 1,000 and 3,000 persons. LSOAs are not related to ward boundaries, but as OAs are the building blocks for these larger geographies, it is useful to know their location and individual populations as they are used in other data sets (e.g. Indices of Deprivation). For reference, a complete list of LSOAs for South Gloucestershire is included below, along with their total population and household data.

The map below shows the Output Areas that are within the ward boundary and have been used for calculating the ward tables. The individual population and household data is also included for each OA along with the LSOA in which it sits.

## Output Areas and LSOAs in Severn Vale ward

This map shows Output Areas (OA21) within the ward. Larger LSOA boundaries, which are built from Output Areas, are also shown. LSOAs on the edge of the ward will sit across the boundary.



Contains OS data © Crown copyright and database right 2023. Source: Office for National Statistics licensed under the Open Government Licence v 3.0

The table below shows individual Output Areas, the LSOA they are part of and their resident and household numbers.

## OA21 Population and households in Severn Vale ward

Output Area (OA21)	Lower layer Super Output Area in which OA21 is located (LSOA21)	OA21 Population: All usual residents	Lives in a household	Lives in a communal establishment
E00075093	E01014862	379	379	0
E00075095	E01014862	436	388	48
E00075096	E01014862	337	337	0
E00075097	E01014862	364	364	0
E00075101	E01014863	294	294	0
E00075102	E01014863	311	307	4
E00075103	E01014864	322	322	0
E00075104	E01014864	346	346	0
E00075105	E01014863	301	301	0
E00075106	E01014864	281	281	0
E00075107	E01014864	320	305	15
E00075108	E01014863	355	355	0
E00075109	E01014864	259	259	0
E00075110	E01014863	255	255	0
E00075589	E01014963	201	201	0
E00075590	E01014962	312	312	0
E00075591	E01014962	124	124	0
E00075592	E01014962	410	410	0
E00075593	E01014962	350	350	0
E00075594	E01014963	444	433	11
E00075595	E01014962	385	338	47
E00075596	E01014963	234	234	0
E00075597	E01014963	255	255	0
E00075598	E01014963	200	200	0
E00075599	E01014963	247	247	0
E00075600	E01014963	307	307	0
E00075601	E01014962	166	166	0
E00173072	E01014862	321	321	0
E00173074	E01014862	371	371	0
E00173075	E01014862	165	165	0
E00173077	E01014862	252	252	0
E00173078	E01014862	312	312	0

Source: ONS Census21, Table TS001

## Index of tables

<b>1. DEMOGRAPHY AND MIGRATION.....</b>	<b>2</b>
T1. Sex.....	2
T2. Age.....	2
T3. Residence type .....	2
T4. Number of households .....	2
T5. Household composition.....	3
T6. Household deprivation.....	3
T7. Household size.....	4
T8. Living arrangements.....	4
T9. Legal partnership status .....	4
T10. Country of birth.....	5
T11. Length of residence in the UK .....	5
T12. Passports held .....	5
<b>2. ETHNICITY, IDENTITY, LANGUAGE AND RELIGION .....</b>	<b>6</b>
T13. Ethnicity.....	6
T14. National identity.....	6
T15. Religion .....	7
T16. Household language .....	7
<b>3. HEALTH, DISABILITY AND UNPAID CARE .....</b>	<b>7</b>
T17. General health.....	7
T18. Disability.....	8
T19. Provision of unpaid care by number of hours .....	8
<b>4. LABOUR MARKET .....</b>	<b>8</b>
T20. Employment history.....	8
T21. Economic activity.....	9
T22. Highest level of qualification .....	9
<b>5. WORK AND TRAVEL .....</b>	<b>10</b>
T23. Hours worked .....	10
T24. Occupation .....	10
T25. Industry .....	11
T26. Method used to travel to work .....	11
T27. National Statistic Social Economic Classification (NS-SeC).....	12
<b>6. HOUSING .....</b>	<b>12</b>
T28. Accommodation type.....	12
T29. Tenure of household .....	13
T30. Number of bedrooms.....	13
T31. Number of rooms (VOA).....	13
T32. Occupancy rating for bedrooms .....	14
T33. Central heating.....	14
T34. Car or van availability .....	15
<b>7. ARMED FORCES .....</b>	<b>15</b>
T35. Previously served in the armed forces .....	15
T36. Number of people in the household who have previously served in UK armed forces .....	15



## Notes

### Protecting personal data

Sometimes ONS make changes to data where it is possible to identify individuals. This is called statistical disclosure control (SDC). For Census 2021 this involved:

- Targeted record swapping. If a household was likely to be identified in datasets, this record would be swapped with a similar one from a nearby small area. A very unusual household could be swapped with one in a nearby local authority.
- Adding small changes to some counts (cell perturbation). This could change a count of four to a three or a five and make a small difference between tables depending how those data is broken down. This will also affect some table totals.

### Individual table notes

<sup>1</sup> This is the sex recorded by the person completing the census. The options were "Female" and "Male". Note that in the census tables, a usual resident of the UK is anyone who, on 21 March 2021, is in the UK and has stayed, or intends to stay, in the UK for 12 months or more or has a permanent UK address and is outside the UK and intends to be outside the UK for less than 12 months. The only exception is members of the armed forces on deployment on operations, who remain usual residents of the UK regardless of length of deployment. This is the same definition as used in the mid-year population estimates and allows for comparability with population estimates from other countries.

<sup>2</sup> A person's age on Census Day, 21 March 2021 in England and Wales. Estimates for single year of age between ages 90 and 100+ are less reliable than other ages. Estimation and adjustment at these ages was based on the age range 90+ rather than five-year age bands.

<sup>3</sup> People who completed the normal household questionnaire were recorded as living in a household. Those who completed an individual questionnaire were asked if they lived in a household or a communal establishment.

<sup>4</sup> This is the total figure for number of households. Other tables may have a slight variation in figures, including the total, due to statistical disclosure control – see note above.

<sup>5</sup> Figure is for households. Total may vary from total household table (TS041) due to statistical disclosure control. One-family households are classified by: i) the number of dependent children ii) family type (married, civil partnership or cohabiting couple family, or lone parent family). Other households are classified by: i) the number of people ii) the number of dependent children iii) whether the household consists only of students or only of people aged 66 and over. Data about household relationships might not always look consistent with legal partnership status. This is because of complexity of living arrangements and the way people interpreted these questions. Take care when using these two variables together.

<sup>6</sup> Visitors staying at an address do not count to that household's size.

<sup>7</sup> The living arrangements classification combines responses to the question on marital and civil partnership status with information about whether or not a person is living in a couple. This topic is only applicable to people in households. Living arrangements differs from marital and civil partnership status because cohabiting takes priority over other categories. For example, if a person is divorced and cohabiting, then in results for living arrangements they are classified as cohabiting.

<sup>8</sup> Classifies a person according to their legal marital or registered civil partnership status on Census Day 21 March 2021. It is the same as the 2011 census variable "Marital status" but has been updated for Census 2021 to reflect the revised Civil Partnership Act that came into force in 2019. In Census 2021 results, "single" refers only to someone who has never been married or in a registered civil partnership.

<sup>9</sup> The country in which a person was born. For people not born in one of the four parts of the UK, there was an option to select "elsewhere". People who selected "elsewhere" were asked to write in the current name for their country of birth.

<sup>10</sup> The length of residence in the UK is derived from the date that a person most recently arrived to live in the UK. It does not include returning from a holiday or short stay outside the UK. Length of residence is only applicable to usual residents who were not born in the UK. It does not include usual residents born in the UK who have emigrated and since returned - these are recorded in the category "born in the UK".

<sup>11</sup> All passports classifies a person according to the passport or passports they held at the time of the census. This included expired passports or travel documents people were entitled to renew. Where a person recorded having more than one passport, they were counted only once, categorised in the following priority order: 1. UK passport, 2. Irish passport, 3. Other passport. Only the first country written in "Other passport" was taken.

<sup>12</sup> The ethnic group that the person completing the census feels they belong to. This could be based on their culture, family background, identity or physical appearance. The question about the ethnic group people feel they belong to is self-identified and is subjectively meaningful to the person answering the question. This means that how a person chooses to identify can change over time. Respondents could choose one out of 19 tick-box response categories, including write-in response options. A new Roma category next to the Gypsy or Irish Traveller tick box within the White category was added for Census 2021. A write-in option for those selecting African within the Black, Caribbean or Black British category was also added so a more specific ethnic background could be recorded.

<sup>13</sup> Someone's national identity is a self-determined assessment of their own identity, it could be the country or countries where they feel they belong or think of as home. It is not dependent on ethnic group or citizenship. Respondents could select more than one national identity.

<sup>14</sup> The religion people connect or identify with (their religious affiliation), whether or not they practice or have belief in it. This question was voluntary and includes people who identified with one of 8 tick-box response options, including 'No religion', alongside those who chose not to answer this question.

<sup>15</sup> Classifies households by the combination of adults and children (aged 3 to 15 years) within a household that have English (English or Welsh in Wales) as their main language..

<sup>16</sup> A person's assessment of the general state of their health from very good to very bad. This assessment is not based on a person's health over any specified period of time.

<sup>17</sup> People who assessed their day-to-day activities as limited by long-term physical or mental health conditions or illnesses are considered disabled. This definition of a disabled person meets the harmonised standard for measuring disability and is in line with the Equality Act (2010).

- <sup>18</sup> An unpaid carer may look after, give help or support to anyone who has long-term physical or mental ill-health conditions, illness or problems related to old age. This does not include any activities as part of paid employment. This help can be within or outside of the carer's household.
- <sup>19</sup> Census 2021 took place during the coronavirus (COVID-19) pandemic. The national lockdown, associated guidance and furlough measures will have affected the labour market topic. Care should be taken when using this data for planning and policy purposes.
- <sup>20</sup> People aged 16 years and over are economically active if, between 15 March and 21 March 2021, they were: i) in employment (an employee or self-employed) ii) unemployed, but looking for work and could start within two weeks iii) unemployed, but waiting to start a job that had been offered and accepted. It is a measure of whether or not a person was an active participant in the labour market during this period. Economically inactive are those aged 16 years and over who did not have a job between 15 March to 21 March 2021 and had not looked for work between 22 February to 21 March 2021 or could not start work within two weeks. The census definition differs from International Labour Organization definition used on the Labour Force Survey, so estimates are not directly comparable. An employee is a person aged 16 years and over in employment doing paid work for an individual or organisation. This relates to people's main jobs or, if not working at the time of the census, their last main jobs. Self-employed is defined as people aged 16 years and over who own and operate their own business, professional practice or similar enterprise, including those operated with a partner. This relates to people's main jobs or, if not working at the time of the census, their last main jobs. This can include people who work freelance, which means someone who is self-employed and works (or worked) for different companies on particular pieces of work. Self-employed people who are not freelance can have employees who work for them.
- <sup>21</sup> The number of hours worked per week before the census includes paid and unpaid overtime. This covers the main job of anyone aged 16 years and over.
- <sup>22</sup> Classifies what people aged 16 years and over do as their main job. Their job title or details of activities they do in their job and any supervisory or management responsibilities form this classification. This information is used to code responses to an occupation using the Standard Occupational Classification (SOC) 2020. It classifies people who were in employment between 15 March and 21 March 2021, by the SOC code that represents their current occupation.
- <sup>23</sup> Classifies people aged 16 years and over who were in employment between 15 March and 21 March 2021 by the Standard Industrial Classification (SIC) code that represents their current industry or business. The SIC code is assigned based on the information provided about a firm or organisation's main activity.
- <sup>24</sup> It is difficult to compare this variable with the 2011 Census because Census 2021 took place during a national lockdown. The government advice at the time was for people to work from home (if they can) and avoid public transport. People who were furloughed (about 5.6 million) were advised to answer the transport to work question based on their previous travel patterns before or during the pandemic. This means that the data does not accurately represent what they were doing on Census Day. This variable cannot be directly compared with the 2011 Census Travel to Work data as it does not include people who were travelling to work on that day. It may however, be partially compared with bespoke tables from 2011.
- <sup>25</sup> The National Statistics Socio-economic Classification (NS-SEC) indicates a person's socio-economic position based on their occupation and other job characteristics. It is an Office for National Statistics standard classification. NS-SEC categories are assigned based on a person's occupation, whether employed, self-employed, or supervising other employees. Full-time students are recorded in the "full-time students" category regardless of whether they are economically active. This table is not comparable with the 2011 Census because the classifications in the occupation variable have changed.
- <sup>26</sup> Owner-occupied accommodation can be: owned outright, which is where the household owns all of the accommodation with a mortgage or loan part-owned on a shared ownership scheme. Rented accommodation can be: private rented (for example, rented through a private landlord or letting agent) social rented through a local council or housing association. This information is not available for household spaces with no usual residents.
- <sup>27</sup> For Census 2021, "Renewable energy (for example solar thermal or heat)" and "District or communal heating network" were added as categories. Gas was also split into "Mains gas" and "Tank or bottled gas". The category "Wood (for example, logs, waste wood or pallets)" was separated from "Solid fuels".
- <sup>28</sup> Vehicles included: pick-ups, camper vans and motor homes; vehicles that are temporarily not working; vehicles that have failed their MOT; vehicles owned or used by a lodger; company cars or vans if they're available for private use. Vehicles not included: motorbikes, trikes, quad bikes or mobility scooters; vehicles that have a Statutory Off Road Notification (SORN); vehicles owned or used only by a visitor; vehicles that are kept at another address or not easily accessed. The number of cars or vans in an area relates only to households. Cars or vans used by communal establishment residents are not counted. Households with 10 to 20 cars or vans are counted as having only 10. Households with more than 20 cars or vans were treated as invalid and a value imputed.
- <sup>29</sup> This was a new question for Census 21 so there is no comparability with previous censuses. Identifies people who have previously served in the UK armed forces. This includes those who have served for at least one day in armed forces, either regular or reserves, or Merchant Mariners who have seen duty on legally defined military operations.

For further information please contact the Insight and Engagement Team at [research@southglos.gov.uk](mailto:research@southglos.gov.uk)