

Briefing Note

Census 2021 (001)

28 June 2021

Census 2021: Phase One Data Release (001)

Population and household data for South Gloucestershire

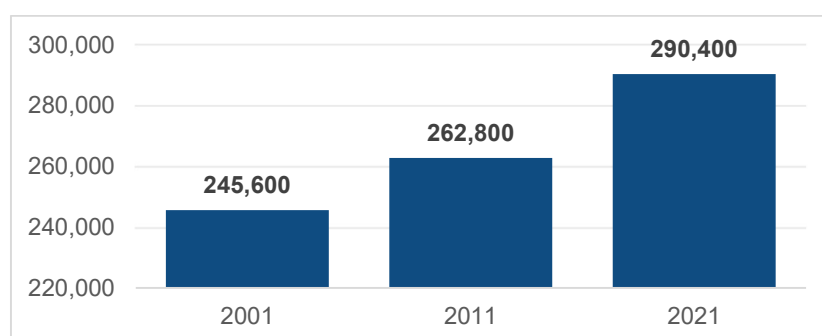
The first results from Census 2021 include estimates of the population and households for England and Wales. At this stage only a very limited amount of data has been published at district level (sex and age), with further releases scheduled for later this year and 2023 (see appendix 1). No sub-district data (e.g. for Wards or LSOAs) is yet available. Data in this first release is rounded to the nearest 100. Future data will not be rounded.

Headline data for South Gloucestershire

Total Population (usual residents¹)

- The population estimate for South Gloucestershire is **290,400**. This represents an increase of 10.5% compared to the recorded population in 2011 (262,800). This compares to a 7.0% increase seen in 2011 from the 2001 census.

Figure 1: South Gloucestershire population change 2001 - 2021



- At 10.5%, South Gloucestershire's population increase is higher than the increase for the South West (7.8%) and England and Wales (6.3%).
- In terms of the national context, the South West had the second highest growth of all regions with an increase in population of 7.8%.

¹ A usual resident is anyone who on Census Day, 21 March 2021 was in the UK and had stayed or intended to stay in the UK for a period of 12 months or more, or had a permanent UK address and was outside the UK and intended to be outside the UK for less than 12 months.

- All Local Authorities in the area have seen their populations increase: Bristol by 10.3%, Bath and North East Somerset by 9.9%, and North Somerset by 7.0%.

Population structure

- In South Gloucestershire there has been an increase of 7.6% in children aged under 15 years, an increase of 8.4% in people aged 15 to 64 years, and an increase of 21.8% in people aged 65 years and over.
- Overall, in England and Wales there has been an increase of 4.7% in children aged under 15 years, an increase of 3.3% in people aged 15 to 64 years, and an increase of 20.0% in people aged 65 years and over.

The population structure of South Gloucestershire’s resident population is illustrated in the chart below:

Figure 2: Population pyramid for South Gloucestershire by age and sex - Census 2021

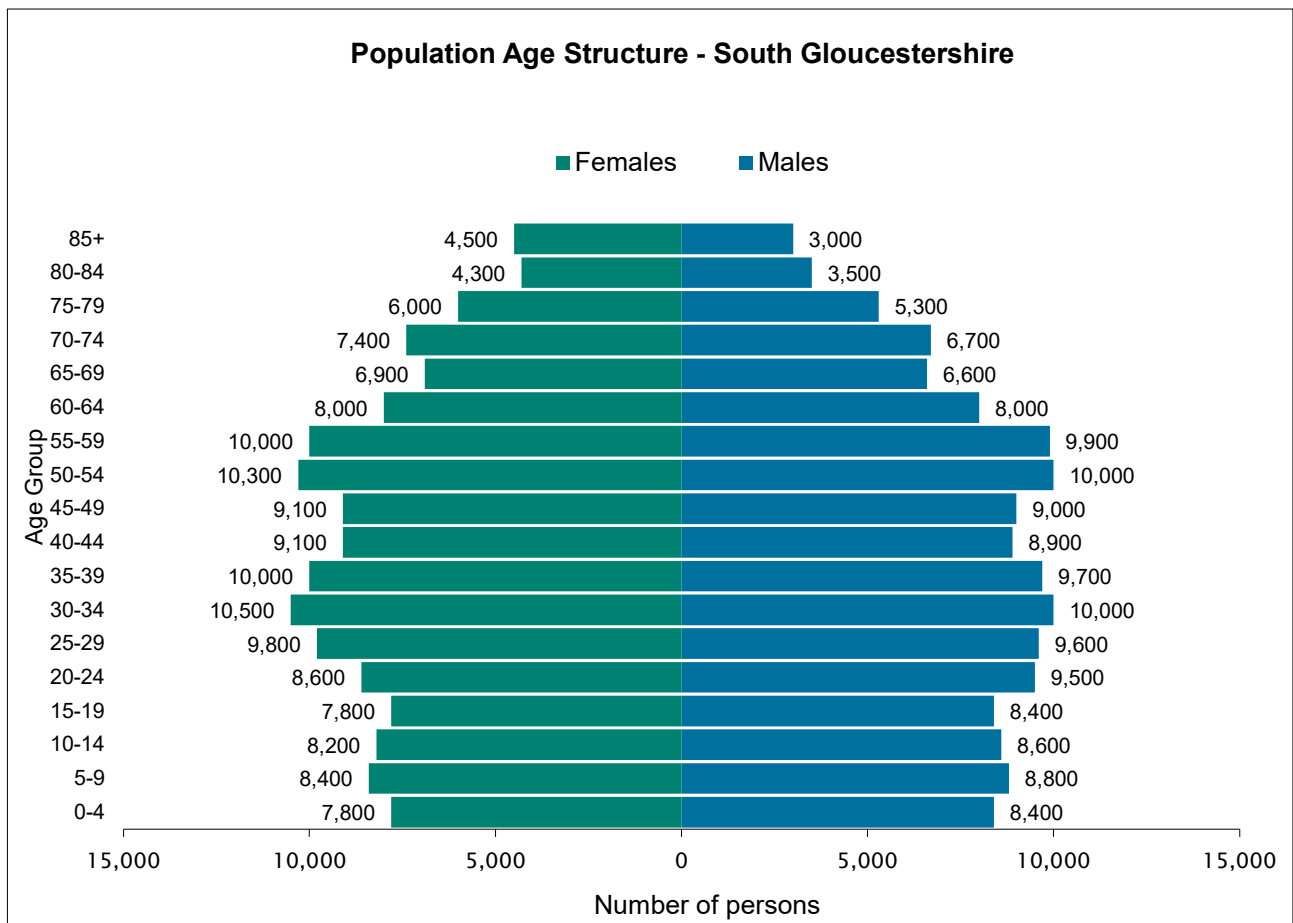
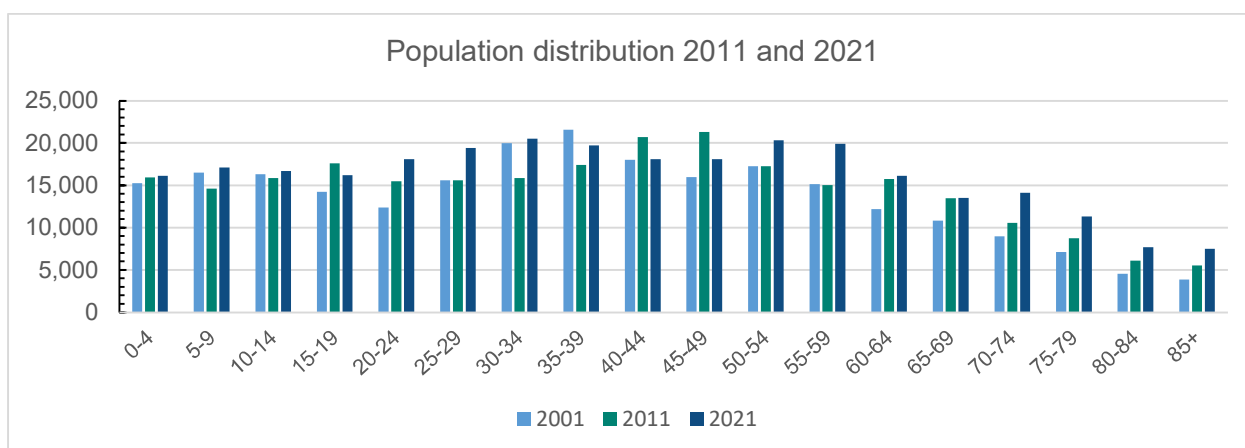


Figure 3: Population change by age 2001-2021



The following table illustrates the proportion of the population in each age band, showing that South Gloucestershire is broadly in line with the national picture:

Figure 4: South Gloucestershire age structure compared to national average

Age	2021 England and Wales	South Gloucestershire
Aged 4 years and under	5.4%	5.5%
Aged 5 to 9 years	5.9%	5.9%
Aged 10 to 14 years	6.0%	5.8%
Aged 15 to 19 years	5.7%	5.6%
Aged 20 to 24 years	6.0%	6.2%
Aged 25 to 29 years	6.5%	6.7%
Aged 30 to 34 years	7.0%	7.1%
Aged 35 to 39 years	6.7%	6.8%
Aged 40 to 44 years	6.3%	6.2%
Aged 45 to 49 years	6.4%	6.2%
Aged 50 to 54 years	6.9%	7.0%
Aged 55 to 59 years	6.8%	6.9%
Aged 60 to 64 years	5.8%	5.5%
Aged 65 to 69 years	4.9%	4.6%
Aged 70 to 74 years	5.0%	4.9%
Aged 75 to 79 years	3.6%	3.9%
Aged 80 to 84 years	2.5%	2.7%
Aged 85 to 89 years	1.6%	1.7%
Aged 90 years and over	0.9%	0.9%
Total	59,597,500	290,400

Household Spaces

In 2021 there were 118,100 household spaces in South Gloucestershire occupied by at least one usual resident. This is an increase of 9.8% compared to the 107,500 figure in 2011.

Every region of England experienced a rise in the number of households between 2011 and 2021. The regions with the largest percentage increases were the East of England (8.5%) and the South West (8.1%).

Response rate

South Gloucestershire achieved a 99% response rate to the census compared to a national average of 97%.

About the Census

Every ten years a census is carried out in England and Wales to produce an accurate estimate of the population. The 2021 Census for England and Wales took place on 21 March 2021 and the Office for National Statistics (ONS) has now published the first release of data.

A significant volume of more detailed data is scheduled for release over the winter and throughout 2023.

This data release is focused on the usually resident population. It should be noted that data in this first release is rounded to the nearest 100. The data published in later releases will not be rounded.

Data Source: Office for National Statistics licensed under the Open Government Licence.

Contact information

Nick Price

Principal Research and Intelligence Officer

T: 01454 866 895

E: Nick.Price@southglos.gov.uk

Appendix 1: 2021 Census Release Timetable

Phase 1 June – December 2022

Date	ONS Publications	Content	Geography
28 June 2022	First release: Population counts by sex and five-year age band and estimates of the numbers of households	Five datasets containing population and household estimates <ul style="list-style-type: none"> • usual resident population by sex • usual resident population by 5-year age group • usual resident population by sex and 5-year age group • usual resident population density • number of households 	England and Wales, rounded to the nearest 100, at local authority level
Autumn to winter 2022	Topic summaries (mainly univariate data)	Set of data and supporting commentary, grouped by a similar theme: <ul style="list-style-type: none"> • demography and migration • ethnic group, national identity, language, and religion • health, disability, and unpaid care • housing • labour market and travel to work • sexual orientation and gender identity • education • UK armed forces veterans 	Usual resident population of England and Wales. Initially, the topic summary datasets available down to Output Area (OA) level.
	Area Profiles	Dynamic area profiles using data from the topic summaries and statistics from across different topics for a particular area. These will also allow users to compare local statistics for an area against national statistics.	A range of area types over time, starting initially with local authorities and wards.

Phase 2 – Winter 2022 to early 2023

ONS Publications	Content
Multivariate data for the usual resident population base	Multivariate data will allow users to combine variables and explore relationships between the data.
Short-term resident population data	Includes those who are were not born in the UK and who intend to stay in the UK for less than 12 months, as of March 2021.
Census 2021 analysis programme begins	A three-year, detailed Census 2021 analysis programme.

Phase 3 - From Spring 2023

ONS Publications	Content
Alternative population bases	Examples include workplace, workday and out-of-term populations
Small populations	Groups that are defined by their cultural background, including characteristics such as ethnic group, country of birth, religion, and national identity.
Detailed migration data	Detailed migration statistics provide the characteristics of people or households who have moved within the UK or from another country into the UK during the year before the census.
Origin-destination data or 'flow' data	Origin-destination data describes the movement of people from one location to another. Examples of origin-destination data we plan to release include migration flow data, workplace flow data, second address flow data and student flow data