

Page Park Annual Survey of Visitors 2023

Page Park Annual Survey of Visitors 2023

Key findings

- We received a total of 253 responses to this year's survey.
- The vast majority of respondents stated they travelled to the park by foot (67%).
- Respondents were asked to rate the park in terms of satisfaction on a number of aspects. Overall, respondents were highly satisfied with the park as a whole, however, the toilet facilities scored the worst in terms of satisfaction.
- When asked to make any comments on the park, the most common theme was that the toilet facilities should be improved (to ensure they are clean, to improve access when the café is shut, etc).
- The second most common issue was with dogs not being on leads when in the park, with some stating dog fouling becoming increasingly common.
- 100% of respondents agreed that the park has had a strong positive impact on the local community.
- When asked why they visit Page Park, the most common reason was to relax/get some fresh air, followed by visiting with friends/family/children.
- When asked how often they visit the café or attend activities, 27% of respondents said weekly, 31% monthly and 30% once/ a few times a year.
- Respondents stated they wanted to see more performance arts events and craft/artisan markets held at the park.
- 73% of respondents stated they are aware of volunteering opportunities in the park; however, 85% had not taken part in any volunteering sessions.

Equalities

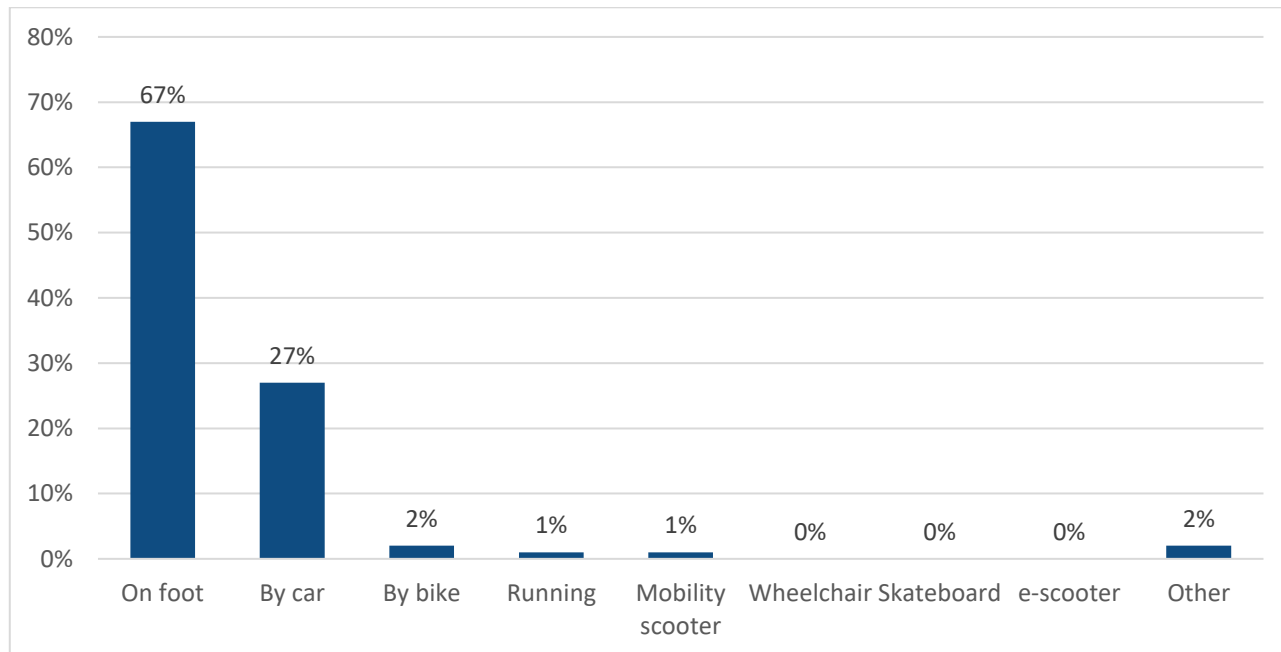
- 193 respondents stated they were female and 57 were male.
- The age breakdown of respondents was varied, and we received some responses from younger residents. 28 respondents were aged between 25 and 34, and 7 were under 24.
- Whilst the majority of respondents stated they are not disabled, 37 stated they are.
- The survey received a low number of responses from individuals of an ethnic minority (9).
- Two respondents stated they have previously served the UK armed forces.

General caveats

The results of this engagement are not statistically representative of the views of South Gloucestershire residents due to the nature of the methodology used. The level of response, information gathered, and views obtained still provide a useful indicator of wider opinion and any important issues that will need to be considered.

Detailed responses

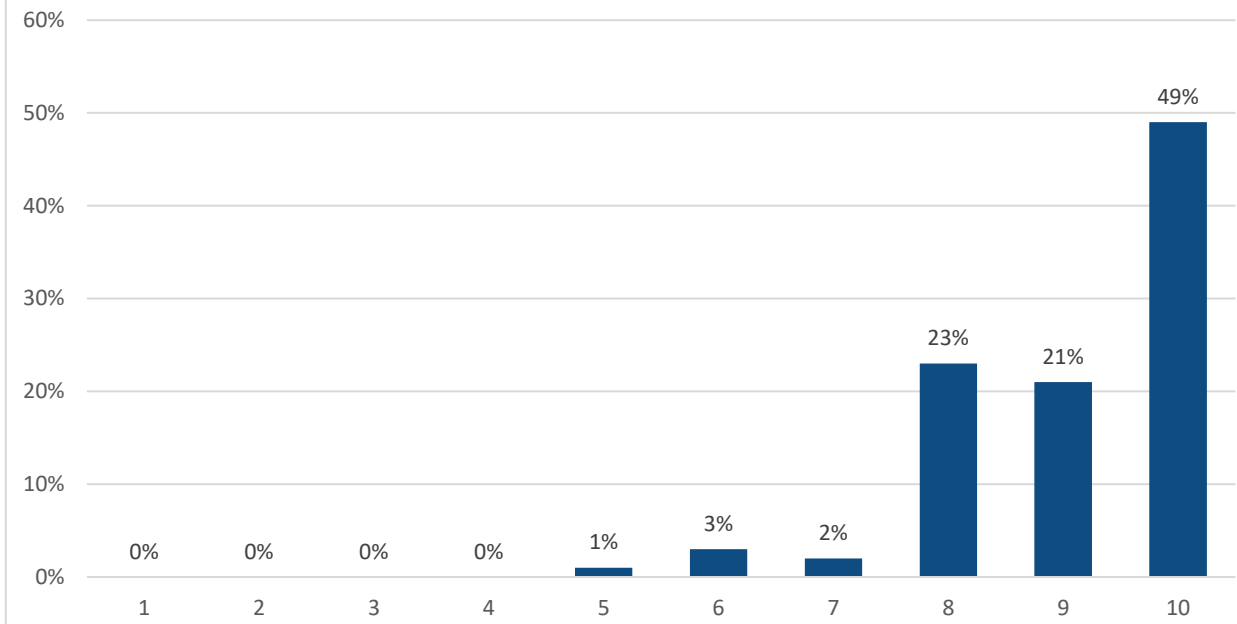
Q1 - How did you travel to the park today?



Base = 253

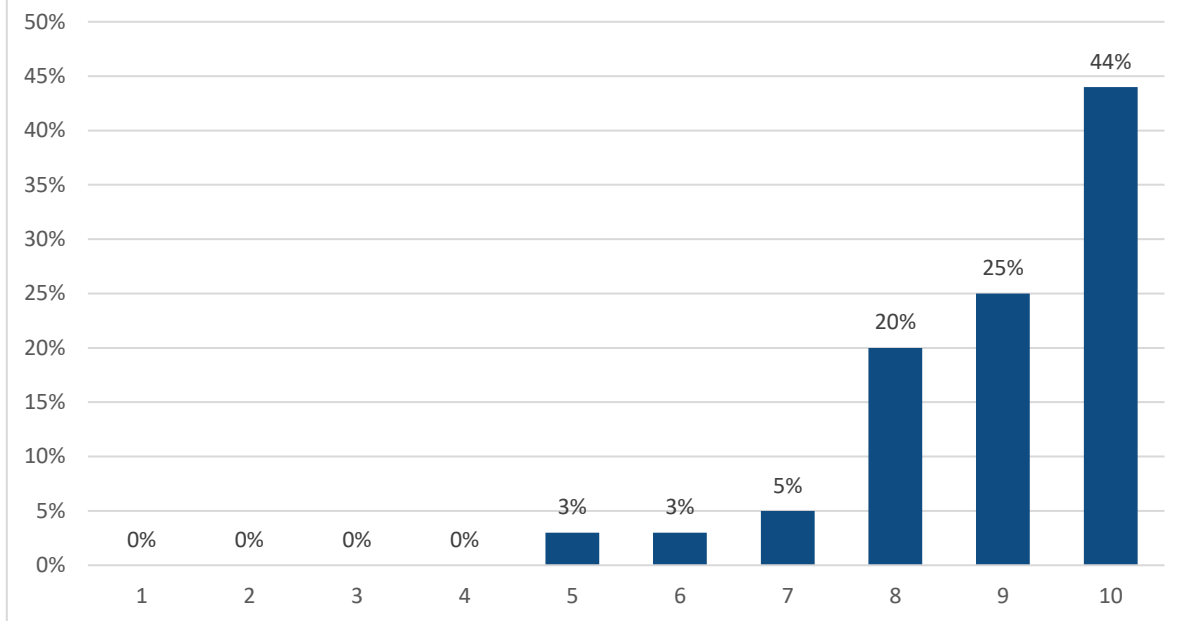
Q2 – How would you rate the following on a scale of 1 to 10, with 1 being very dissatisfied and 10 being very satisfied?

Overall satisfaction with Page Park

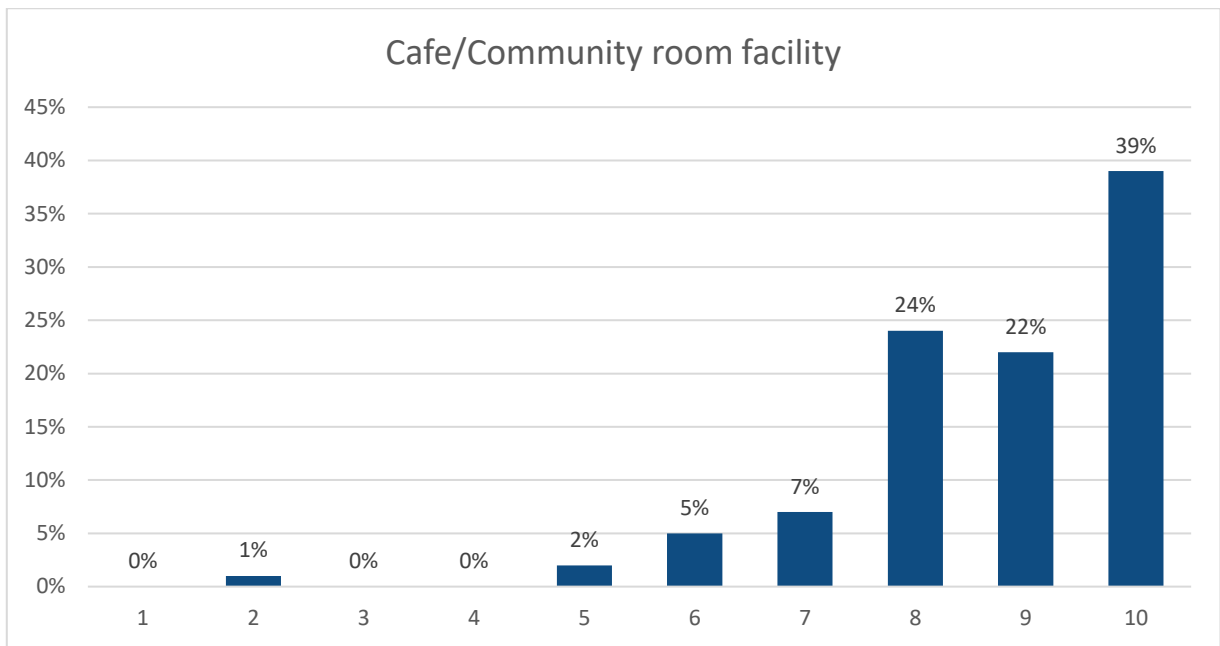


Base = 251

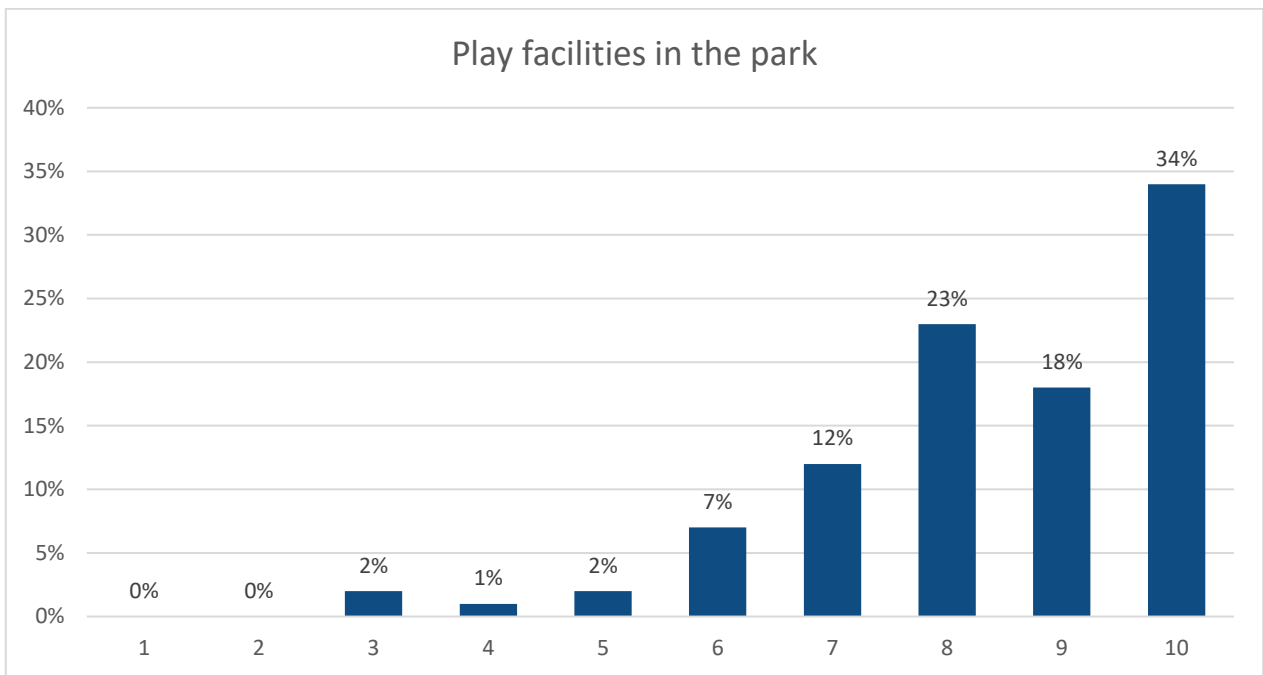
The condition of the park



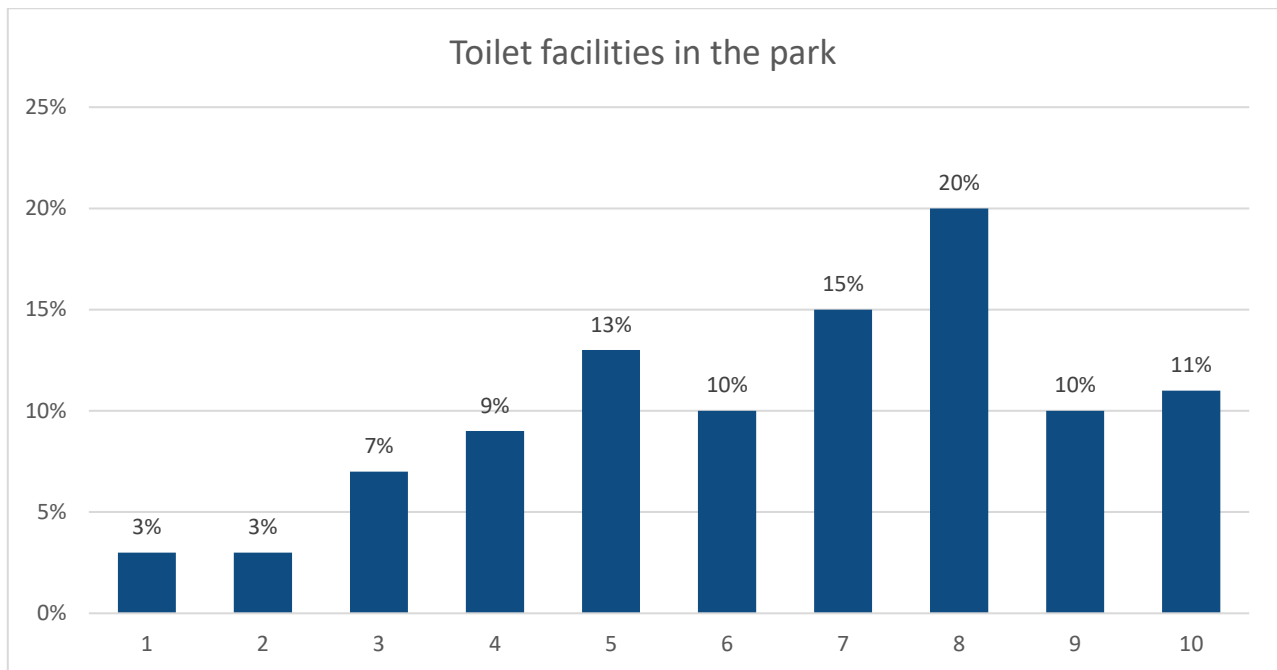
Base = 250



Base = 246



Base = 242



Base = 244

Q3 - Do you have any other comments you would like to make about the park?

There were a number of recurring themes made by respondents in the text comments shown in the table below. The most common theme was that toilets in the park need improving, with many saying the existing toilets are dirty, and that they are unable to access facilities after the café has closed.

The second most common critique was that there are too many dogs not on leads, with many stating fouling to be an ongoing issue.

Recurring themes	Number of comments
Toilets need improving	29.00
I enjoy the park	28.00
Dogs should be on leads	17.00
Better play equipment needed	10.00

Cosmetic improvements needed	8.00
Community feeling around park	6.00
Improve/revamp café	6.00
Bins need more regular cleaning	4.00
Limit access in sensory garden (dogs, cyclists)	3.00
Park feels unsafe	2.00
Park is a main reason I moved into the area	2.00

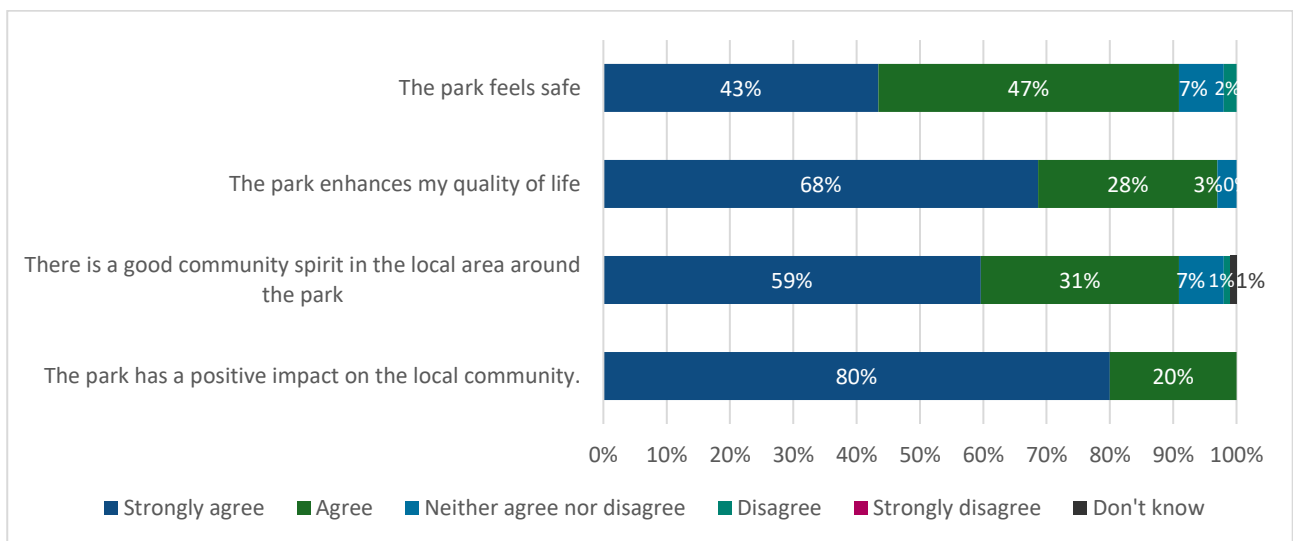
Some individual examples of comments include the following:

“Toilets often a bit messy, bins get very full quickly in the summer months on hot sunny days, leaving lots of litter around the bins”.

“I used to regularly take my elderly parents to the park, but they now refuse to use the toilets which they need”.

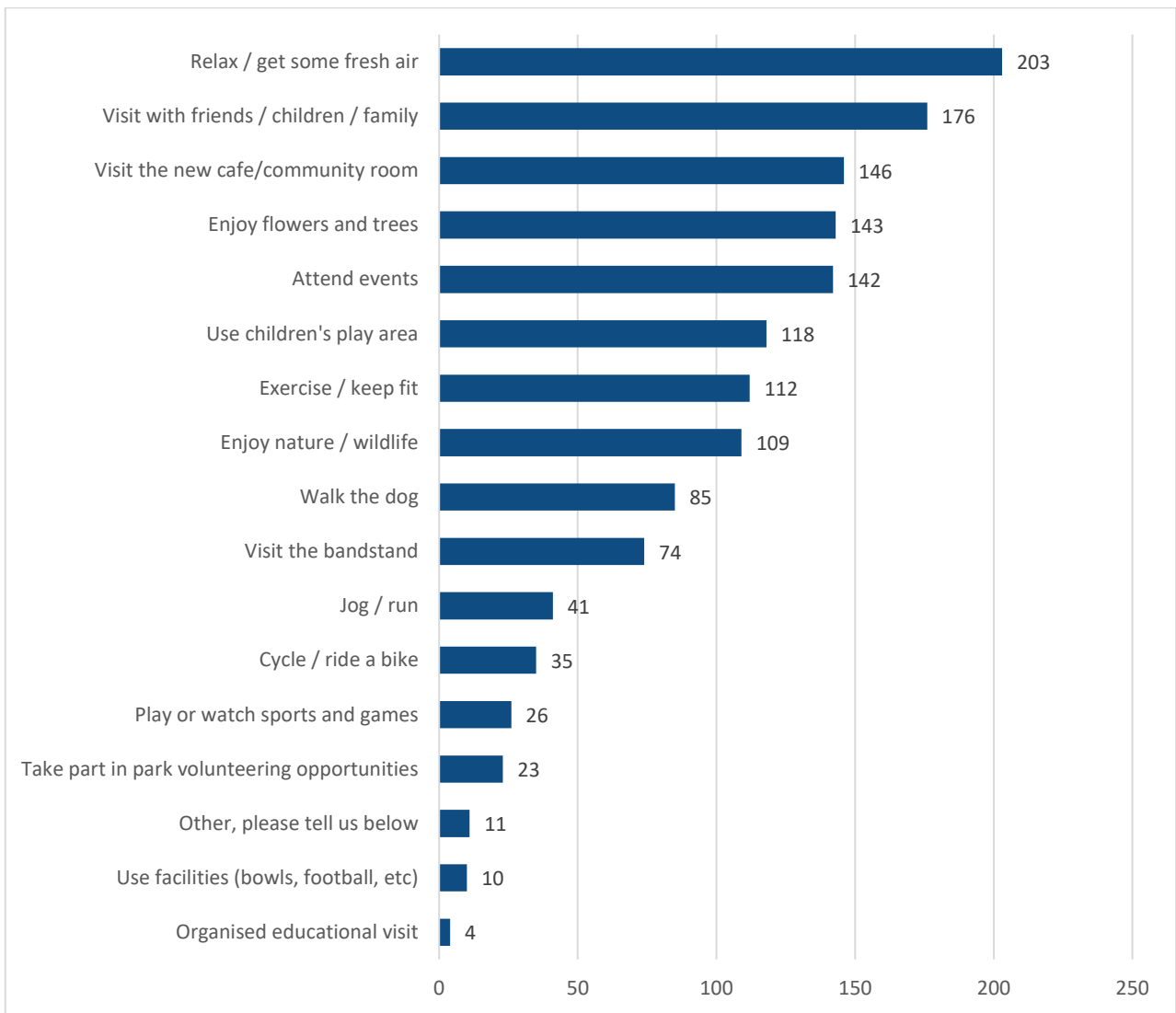
“Dog fouling has become a real problem in the park, to the point that I don’t really want to take my children there. Dog owners seem ambivalent to picking up their dog’s mess even when asked to and letting their dogs run off (including into sensory garden and teenager park) to mess and seeming unconcerned about what impact this might have”.

Q4 - How much would you agree or disagree with each of the following statements?



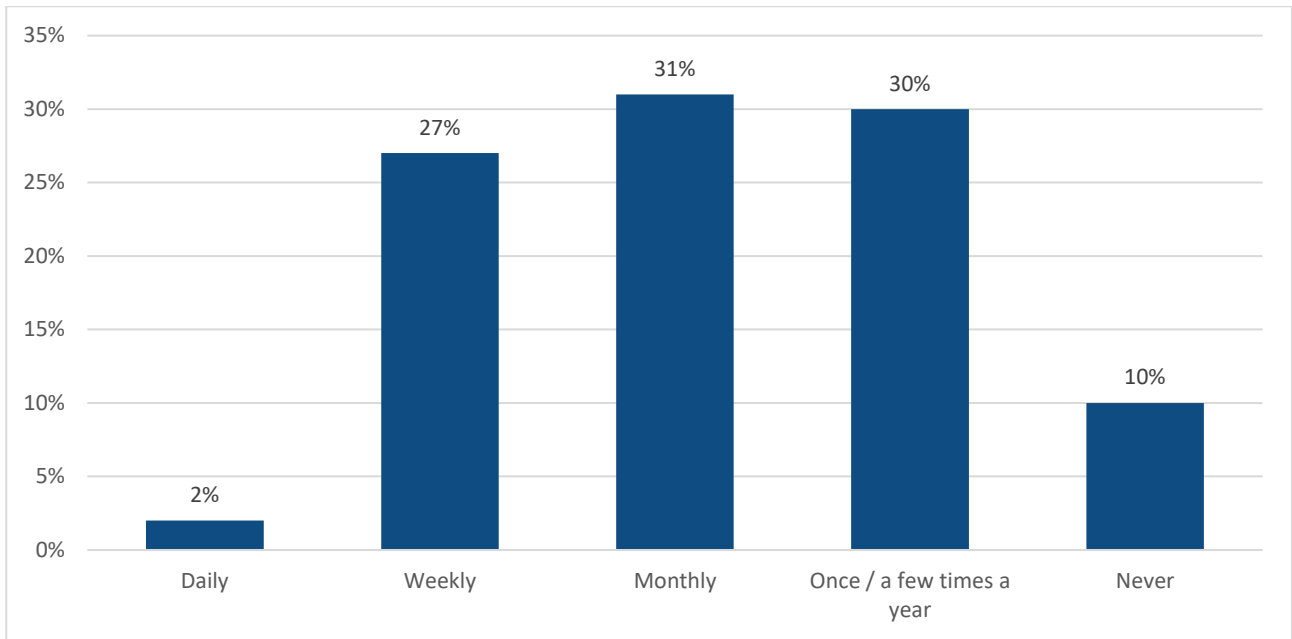
Base = 250

Q5 - If you visit or use Page Park, please tell us your reasons why?



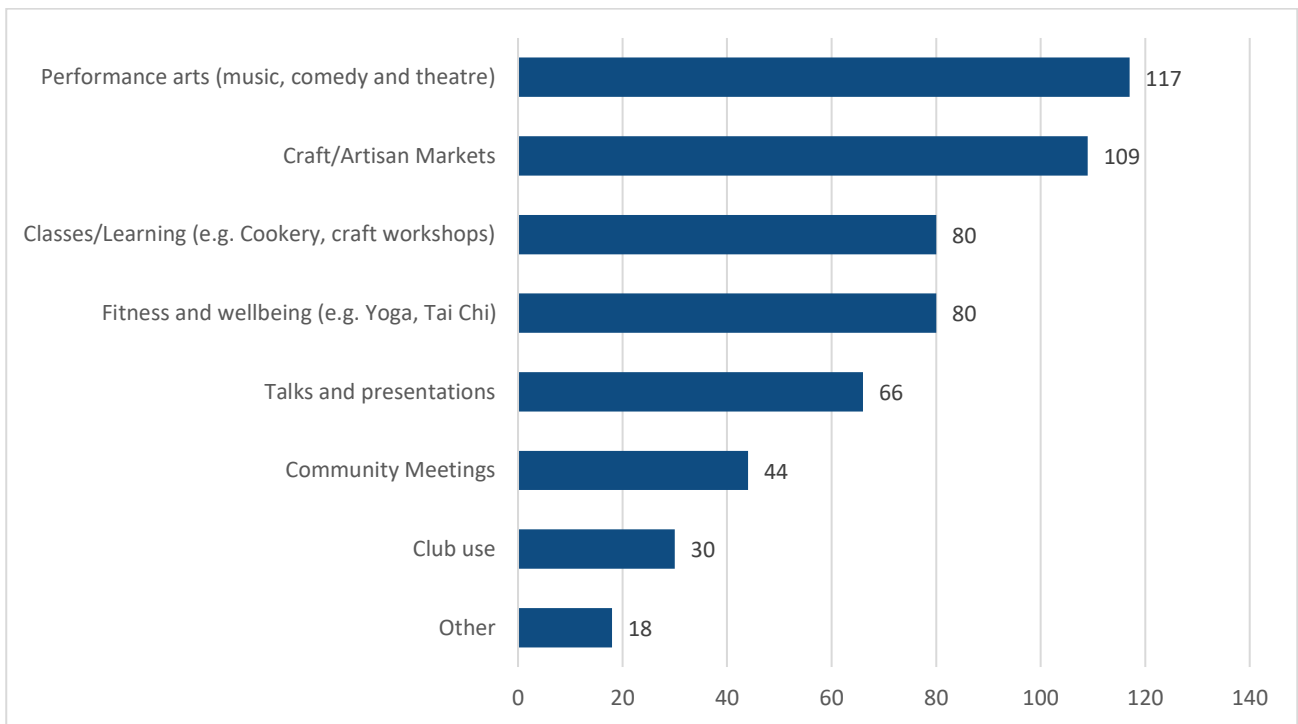
Base = 252

Q6 – How often do you use the Cafe or attend activities in the new building?



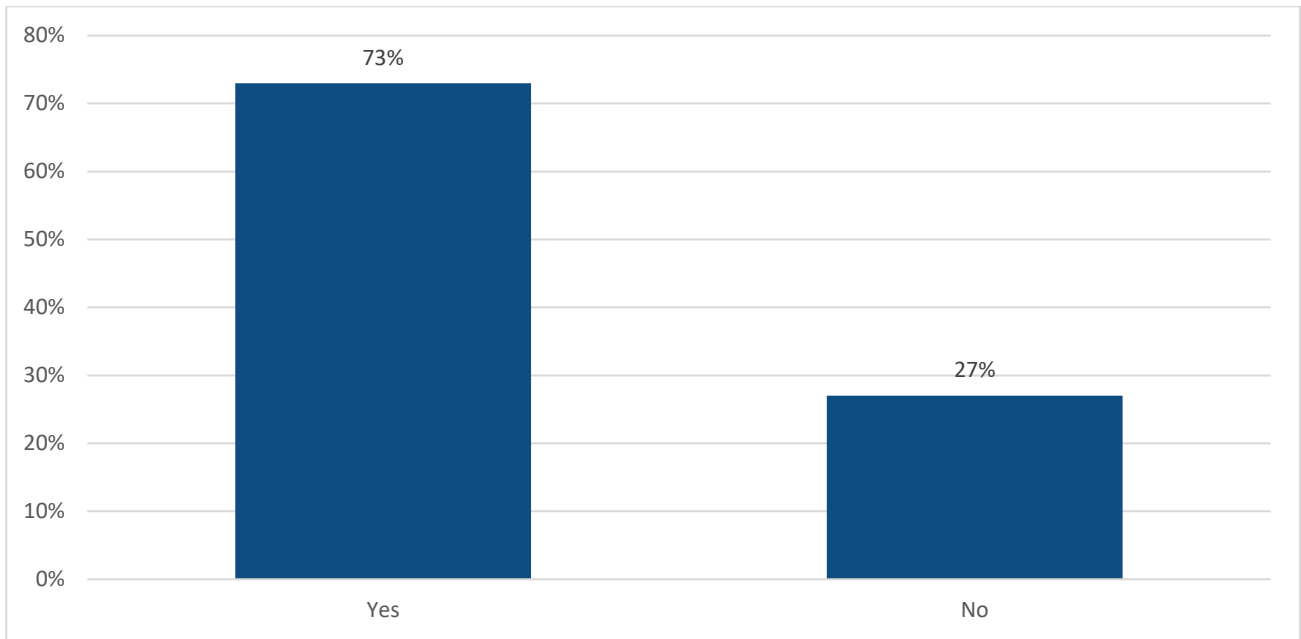
Base = 250

Q7 - What type of events and activities would you like to see more of in The Nest Community Room?



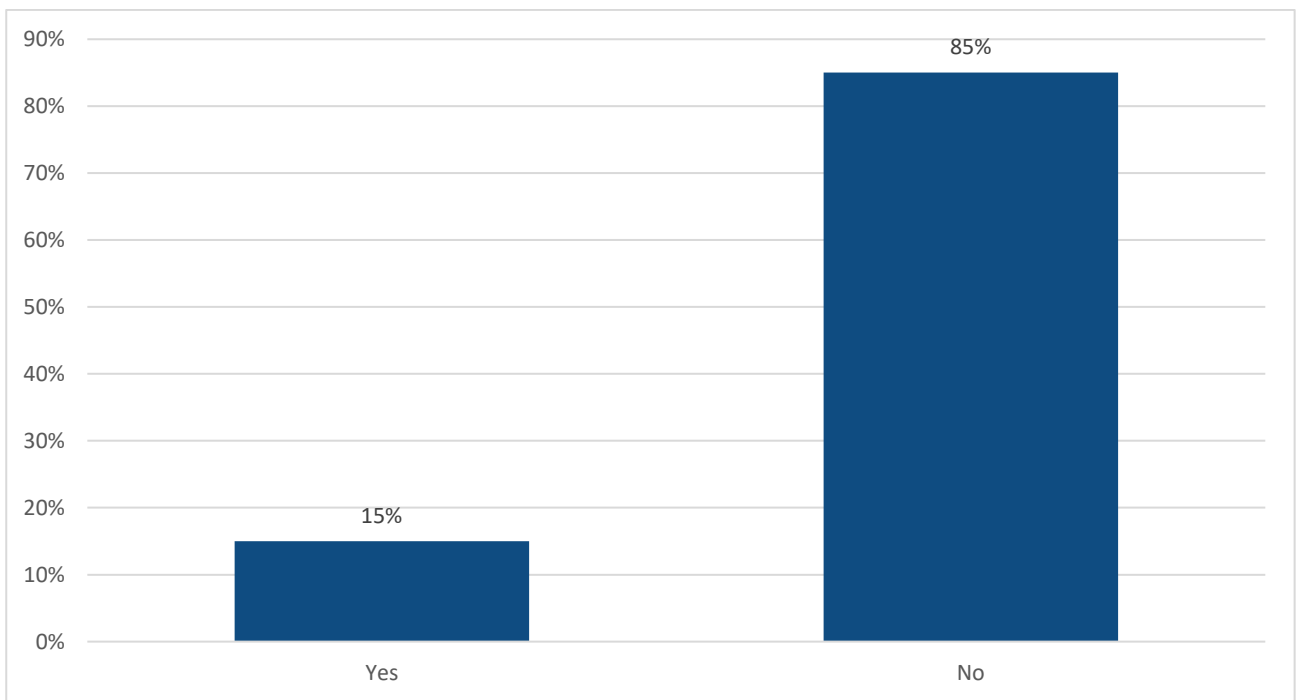
Base = 224

Q8 - Are you aware of the volunteering opportunities in the park?



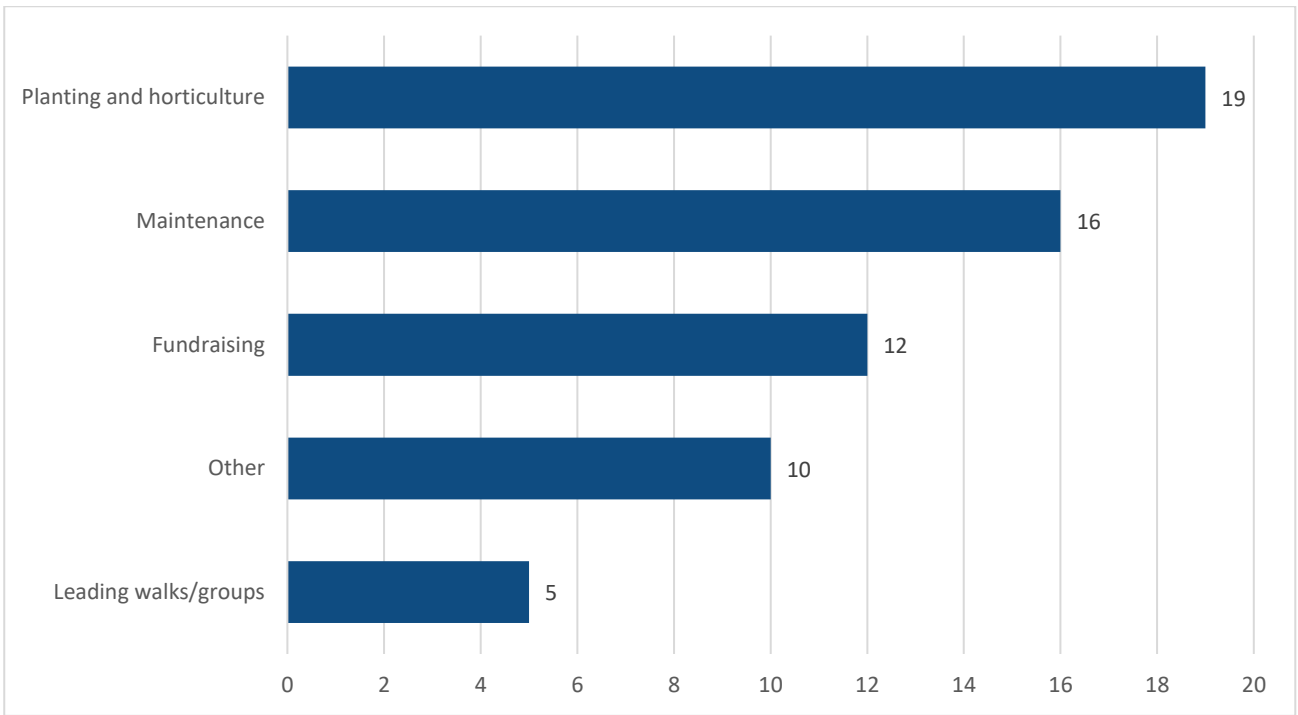
Base = 251

Q9 – Have you taken part in any volunteering sessions?



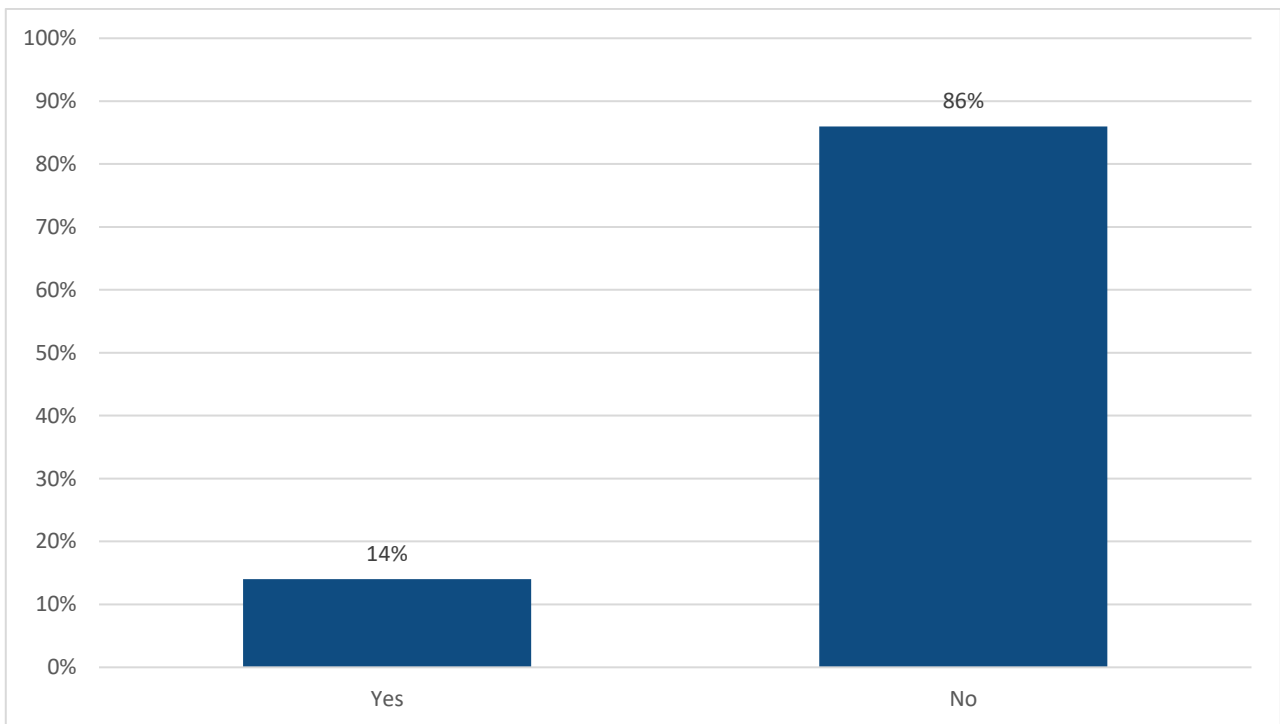
Base = 252

Q10 – If yes, which volunteering opportunities have you taken part in?



Base = 43

Q12 - Would you like to know more about volunteering opportunities in the park?

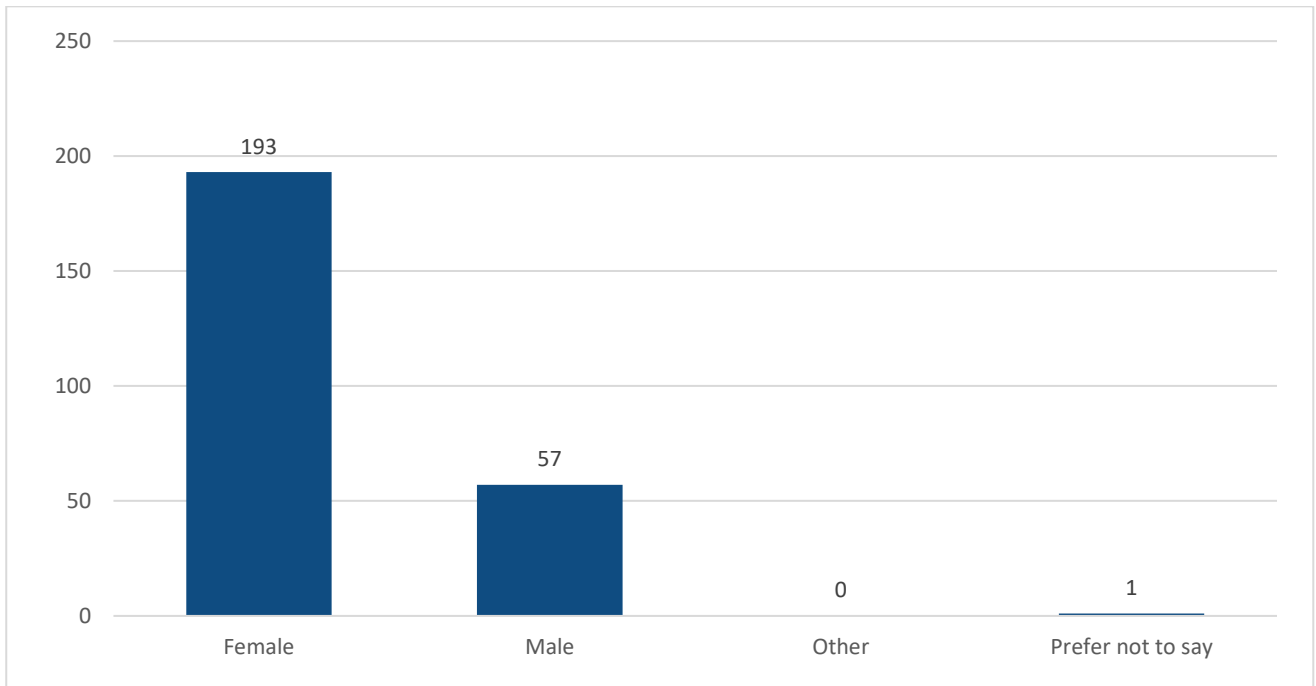


Base = 241

Equalities section

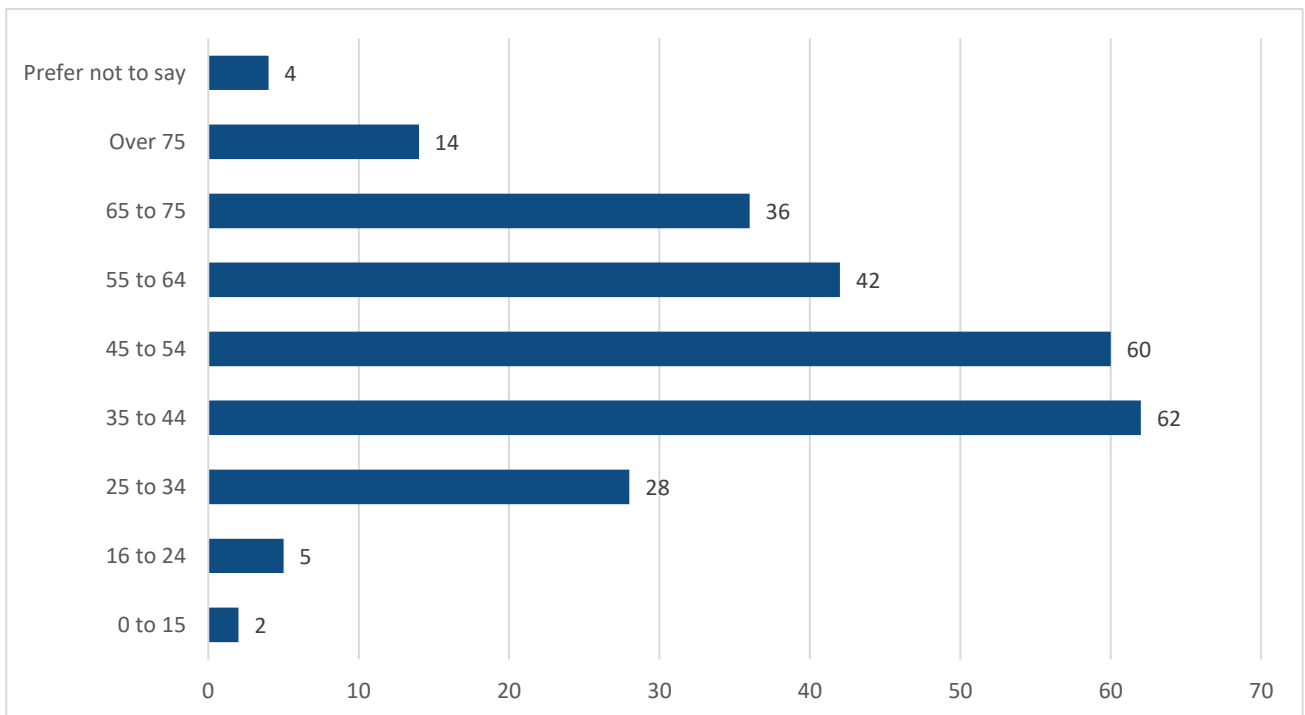
The following questions are aimed at gathering demographic information to help us ensure fair treatment for all by our services and our engagement is targeting as representative a group as possible.

Q15 – Are you?



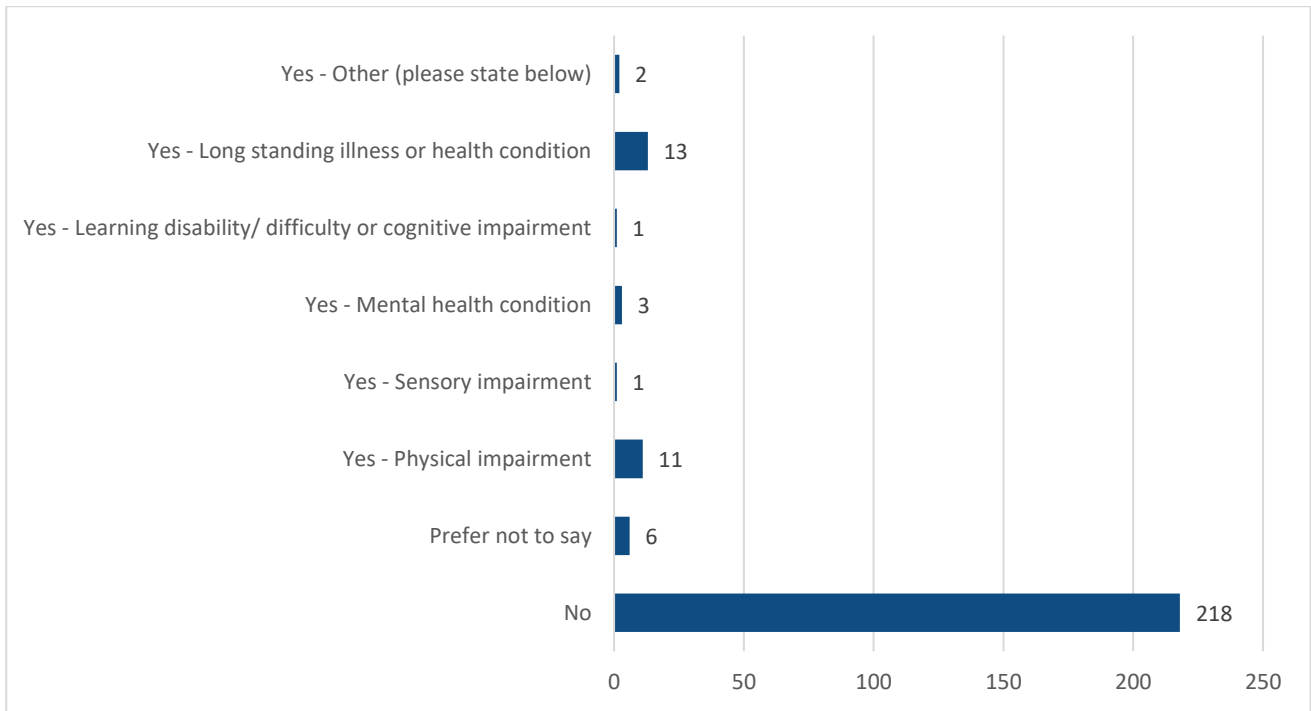
Base = 251

Q16 – How old are you?



Base = 253

Q17 – Do you consider yourself to be disabled?



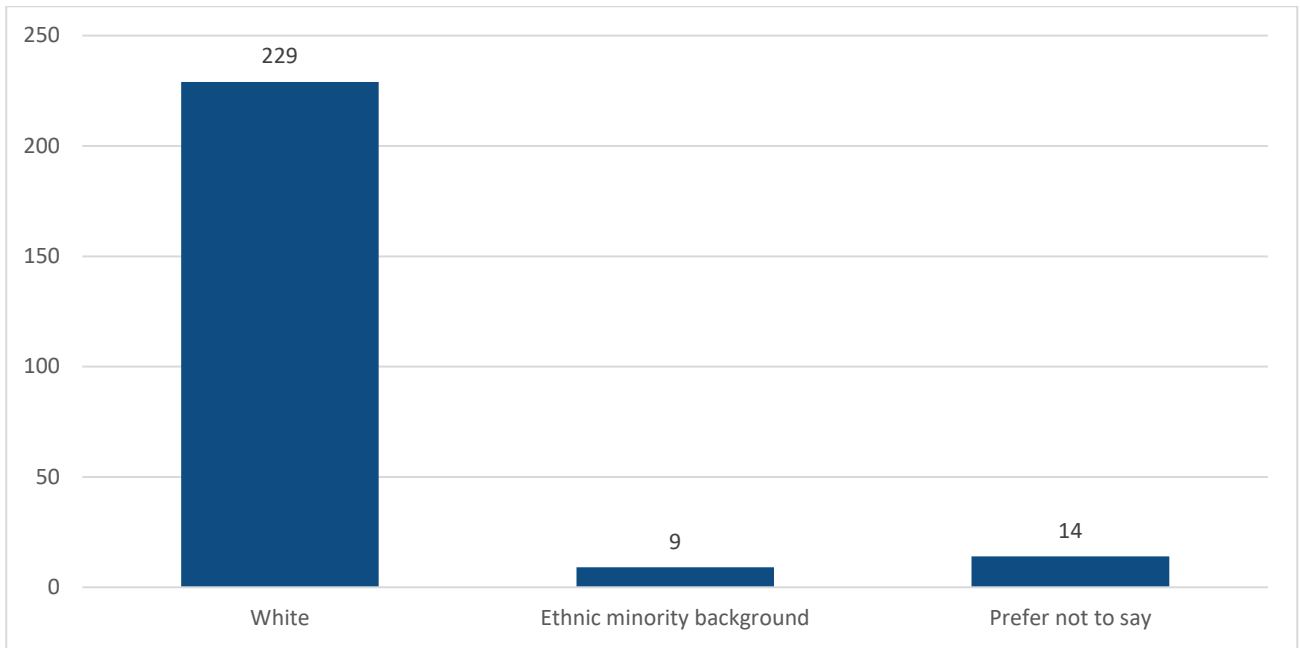
Base = 251

Q18 – If you have stated you are disabled, how does your disability affect your use of the park?

Recurring themes	Number of comments
Flat paths help for walking	3
Park is accessible for mobility scooters	2
Seating helps when can't walk	2

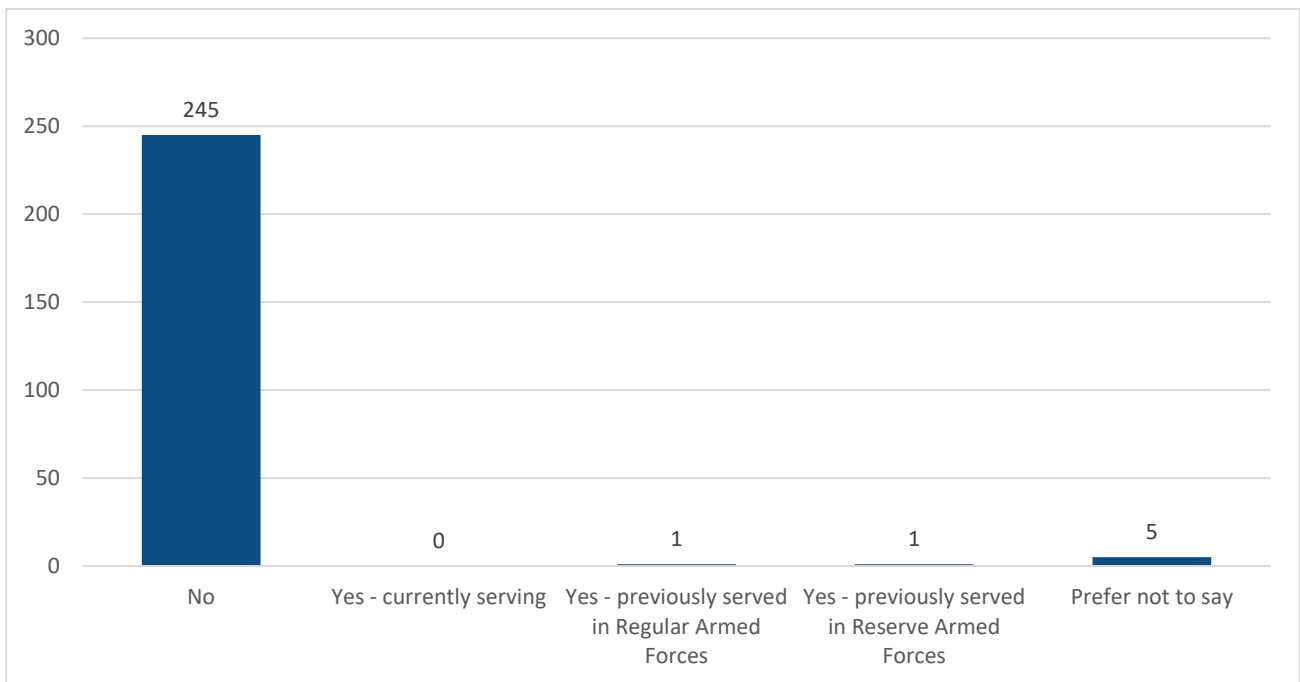
Base = 8

Q19 - Please tell us your ethnic origin.



Base = 252

Q20 - Are you currently, or have you previously, served in the UK Armed Forces?



Base = 252

This report was compiled by the Insight and Engagement team at South Gloucestershire Council. For any queries, please email us at research@southglos.gov.uk