

# PREPARING YOUR PETS FOR AN EMERGENCY

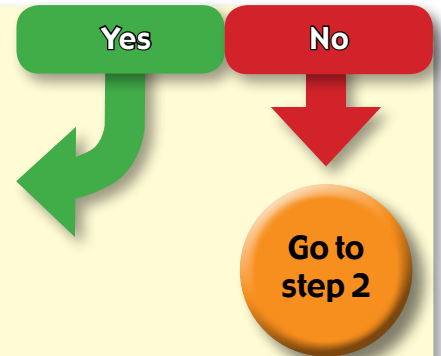
## Step 1 Do you have garden pets like rabbits or guinea pigs?

Make sure that hutches are in good repair and are weather tight.

Can you move hutches into sheds or garages?

Can your neighbours help?

Always maintain a supply of food and bedding in case you are unable to go shopping.



**Be sure to regularly check on the welfare of your garden pets**

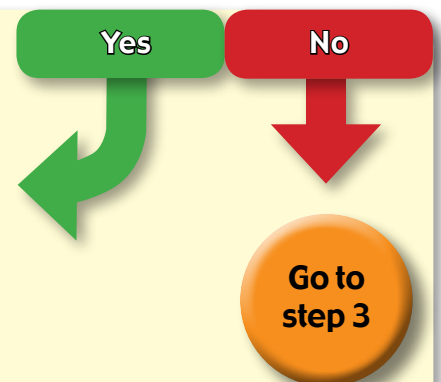
## Step 2 Do you have exotic pets such as lizards, snakes or fish?

Can your pet be transported? Do you have a secure and safe carrier?

How can you maintain the right conditions for your pet?

Maintain a stock of feed and bedding for your pet.

Who can look after your pet if you are forced to evacuate?



**If you are forced to leave your pet behind, be sure to inform the Local Authority that you have done so once you have reached a place of safety. Ensure that you have spare keys to your home so that animal welfare agencies can access your pet if you are unable to do so.**

## Step 3 Do you have indoor pets such as birds, rodents, cats or dogs?

Obtain a suitable secure pet carrier for your pet.

Place bedding and old newspapers in your pet carrier.

Obtain a suitable harness/leash for your pet? Do you need to have a muzzle for your dog?

Make sure your pet micro-chipped. Are the details correct?

Make sure your pet has a collar with name tag and telephone number.

Obtain a recent photo of your pet showing distinguishing marks.

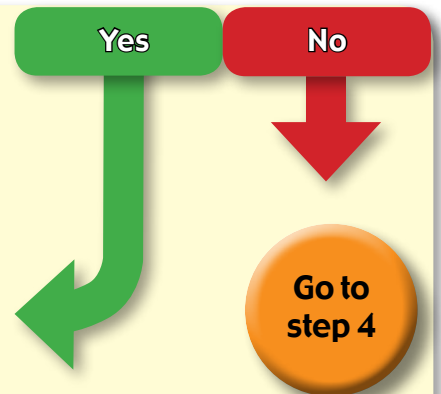
Make a list of the medications your pet is on.

Place copies of your pet vaccination certificates in your "grab bag".

Place pet medications in your "grab bag".

Provide adequate spare food for your pet.

Provide a litter tray and litter for your pet. (inc poop bags).



**If you are forced to leave your pet behind, be sure to inform the Local Authority that you have done so once you have reached a place of safety. Ensure that you have spare keys to your home so that animal welfare agencies can access your pet if you are unable to do so.**

**Go to Page 2**

# PREPARING YOUR PETS FOR AN EMERGENCY

## Step 4

### Do you have livestock such as chickens, goats or horses?

Make sure that arks, coops and stables are in good repair and are weather tight. Check fences, gates and hedges.

Is the location where your animals are kept safe from flooding or other danger?

If the location is at risk from flooding, find a site nearby that is not at risk so you have somewhere to evacuate your animals if the need arises.

If danger threatens, make arrangements so that your animals can be put in their shelters and have adequate food and water.

If you cannot move your animals find out who can, and make arrangements with them to do so. Record their telephone numbers.

Keep a stock of feed and bedding for your animals.






Yes

No

Go to step 5

**IF DANGER THREATENS, MAKE AN EARLY DECISION TO SHELTER YOUR ANIMALS – YOU MAY NOT BE ABLE TO DO SO LATER.**

**DO NOT PUT YOUR LIFE, OR THE LIVES OF OTHERS IN DANGER IN ATTEMPTING TO RESCUE OR PROTECT ANIMALS**

## Step 5

### Have you prepared an evacuation plan?

Can your pets stay with friends or relatives?

How will you transport your pet? - Make sure you have pet carriers.

Make sure you have bedding for them.

Make sure that you have adequate food and water for them.

Take litter trays and litter.

Be sure to take their medications as well.

Take harnesses, leashes for your pet (consider a muzzle for your dog if you are going to a Rest Centre).

Take comfort items for your pets - toys etc.

If necessary take brushes.

Make sure your pet is microchipped, has a collar and pet tag.

Make sure you have recent photographs of your pet.

Take pet vaccination records with you.













No/  
Don't Know

Yes

**IF YOU ARE FORCED TO LEAVE YOUR PET BEHIND TELL THE LOCAL AUTHORITY THAT YOU HAVE BEEN FORCED TO DO SO.**

**DO NOT PUT YOUR LIFE, OR THE LIVES OF OTHERS IN DANGER IN ATTEMPTING TO RESCUE OR PROTECT ANIMALS**

**Consider having a rehearsal of your plan to make sure that it works, and you know what to do and when to do it.**